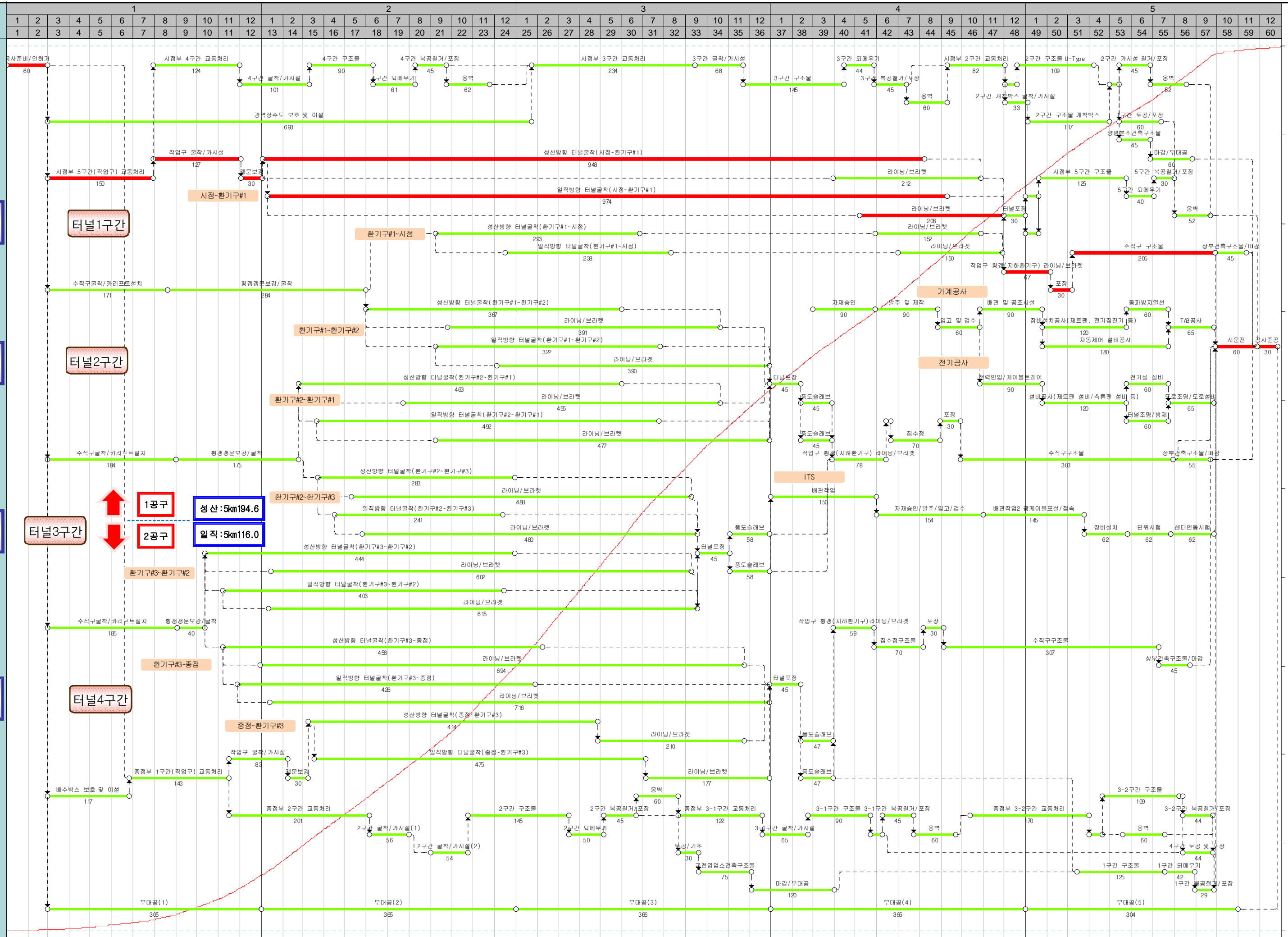


- 시점부 개착구간
- 본선터널
- 터널1구간  
성산: 1km103.8-2km000  
일직: 1km101 ~1km980
- 환기구#1
- 터널2구간  
성산: 2km000-4km080  
일직: 1km980-4km112
- 환기구#2
- 터널3구간  
성산: 4km080-6km760  
일직: 4km112-6km805
- 환기구#3
- 터널4구간  
성산: 6km760-8km979.7  
일직: 6km805-9km001.0
- 중점부 개착구간
- 부대공



기준계획	1												2												3												4												5											
	1	2	3	4	5	6	7	8	9	10	11	12	1	2	3	4	5	6	7	8	9	10	11	12	1	2	3	4	5	6	7	8	9	10	11	12	1	2	3	4	5	6	7	8	9	10	11	12	1	2	3	4	5	6	7	8	9	10	11	12
0.08	0.10	0.11	0.18	0.23	0.26	0.39	0.58	0.80	0.92	1.21	1.50	1.61	1.72	1.84	1.74	1.79	1.83	1.88	1.90	2.44	2.48	2.51	2.80	2.83	2.87	2.88	2.98	3.12	2.54	2.51	2.48	2.16	2.13	2.08	1.90	1.81	1.71	1.72	1.72	1.71	2.11	2.09	2.08	2.06	2.04	2.02	1.90	1.78	1.68	1.50	1.45	1.41	1.71	1.76	1.75	0.26	0.25	0.25		
0.08	0.18	0.29	0.48	0.71	0.97	1.32	1.90	2.70	3.62	4.83	6.33	7.94	9.66	11.50	13.24	15.03	16.88	18.71	20.59	22.49	24.93	27.41	29.92	32.72	35.95	38.42	41.27	44.25	47.37	49.91	52.42	54.91	57.07	59.20	61.29	63.19	65.00	66.71	68.43	70.15	71.86	73.97	76.08	78.14	80.20	82.24	84.26	86.16	87.94	89.60	91.10	92.55	93.96	95.73	97.48	99.24	99.50	99.75	100.00	