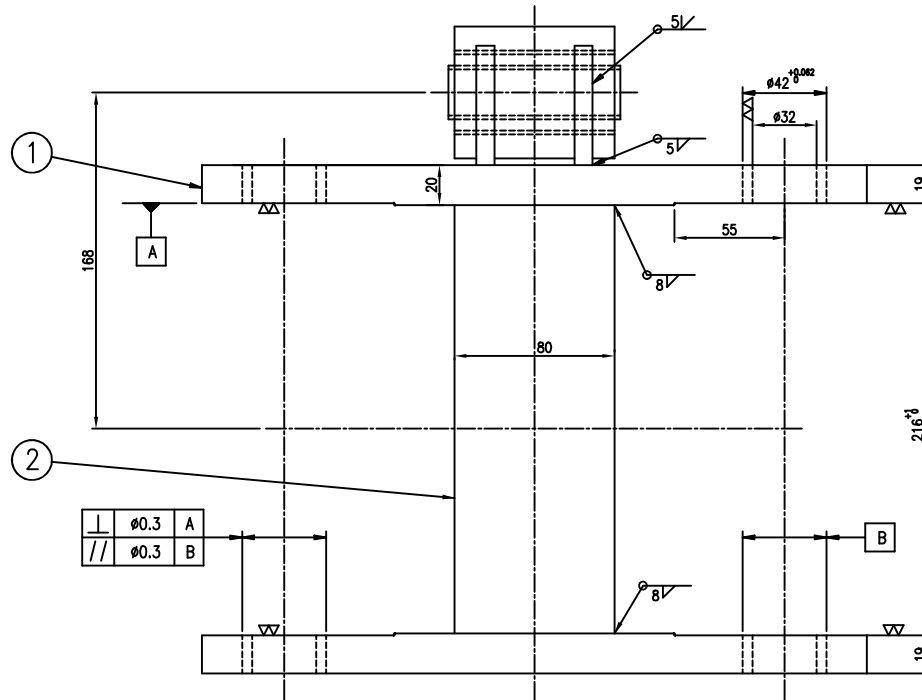
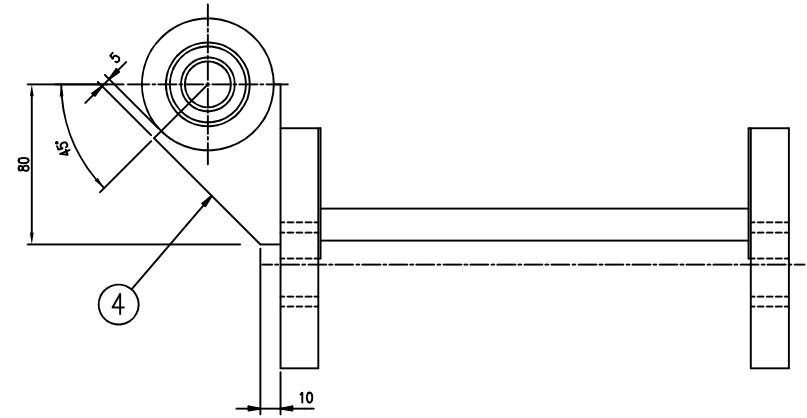
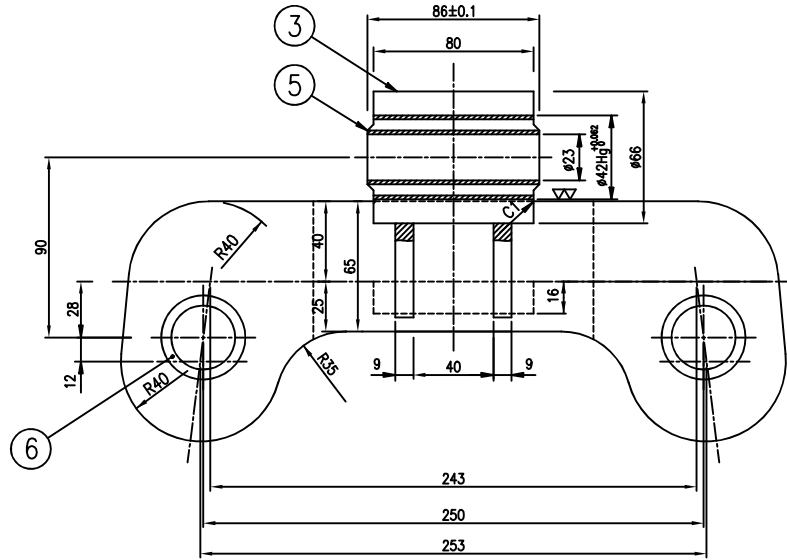


MARK	REVISION DATE	REVISION CAUSE	CHK. BY	SUB. BY	APP. BY



MARK	DESCRIPTION	MATERIAL	Q'TY	UNIT WEIGHT	TOTAL WEIGHT	REMARK
6	BUSH	SM45C	4	0.09	0.36	C32x19 JIS F 4112고주파소입
5	RUBBER BUSH		1	0.34	0.34	350-K601-111
4	PLATE	SS400	2	0.14	0.28	t9
3	HUB	SS400	1	1.28	1.28	
2	PLATE	SS400	1	2.17	2.17	t16
1	PLATE	SS400	2	3.85	7.70	t20

MARK	DESCRIPTION	MATERIAL	Q'TY	UNIT WEIGHT	TOTAL WEIGHT	REMARK
APP. BY	DATE: MAR. 7. 1998		SCALE: 1/2		WORK NO.	
APP. BY	TITLE					
SUB. BY	FIXED POINT SUPPORT					
CHK. BY						
DSN. BY	박상기	DWG. NO.		NO.		
DWN. BY	350-K601-108					

본 도면에 명기하지 않은 공차는 기계가공의 경우 KS B0412, 판금가공의 경우 KS B0413에 따른다.

HHIC

HANJIN HEAVY INDUSTRIES CO., LTD
R/STOCK DESIGN DEPT. DADAEP0 FACTORY

SMC 7&8 편차 (402형)	V-059	8	8	8	8	8	백상기
편차방향	공차번호	Tc	M1	M2	T1	T2	T1'
		차종별수량					담당자