

---

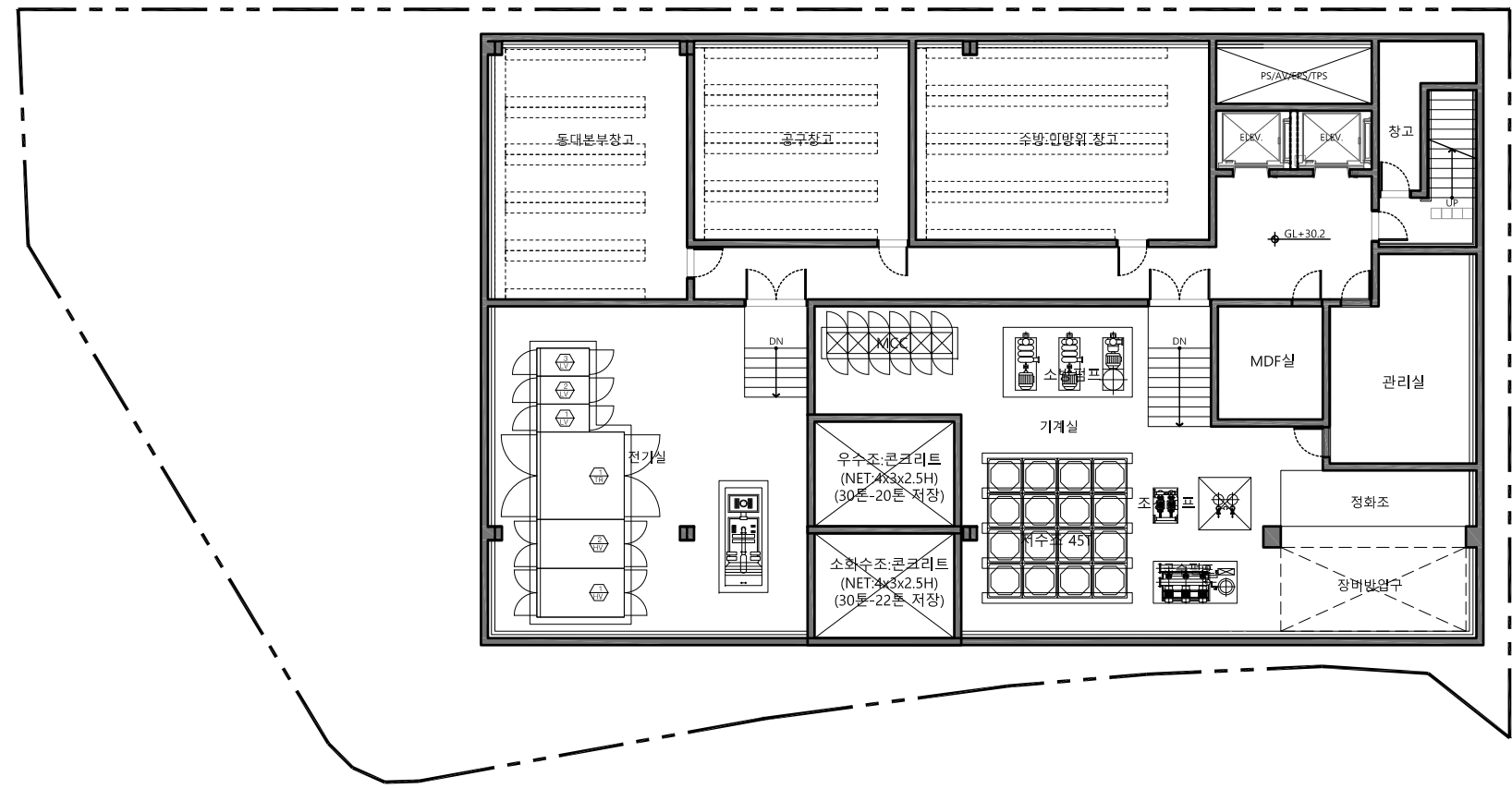
서울특별시 동작구 상도동 373-1번지 일원(상도지구 지구단위계획구역 공공청사용지)  
상도2동 복합청사(주민센터 및 문화원) 신축공사

---



X1 7,000 X2 5,500 X3 5,500 X4 8,100 X5 8,500 X6 6,100 X7

Y3 6,100  
Y2 8,400  
Y1 2,800

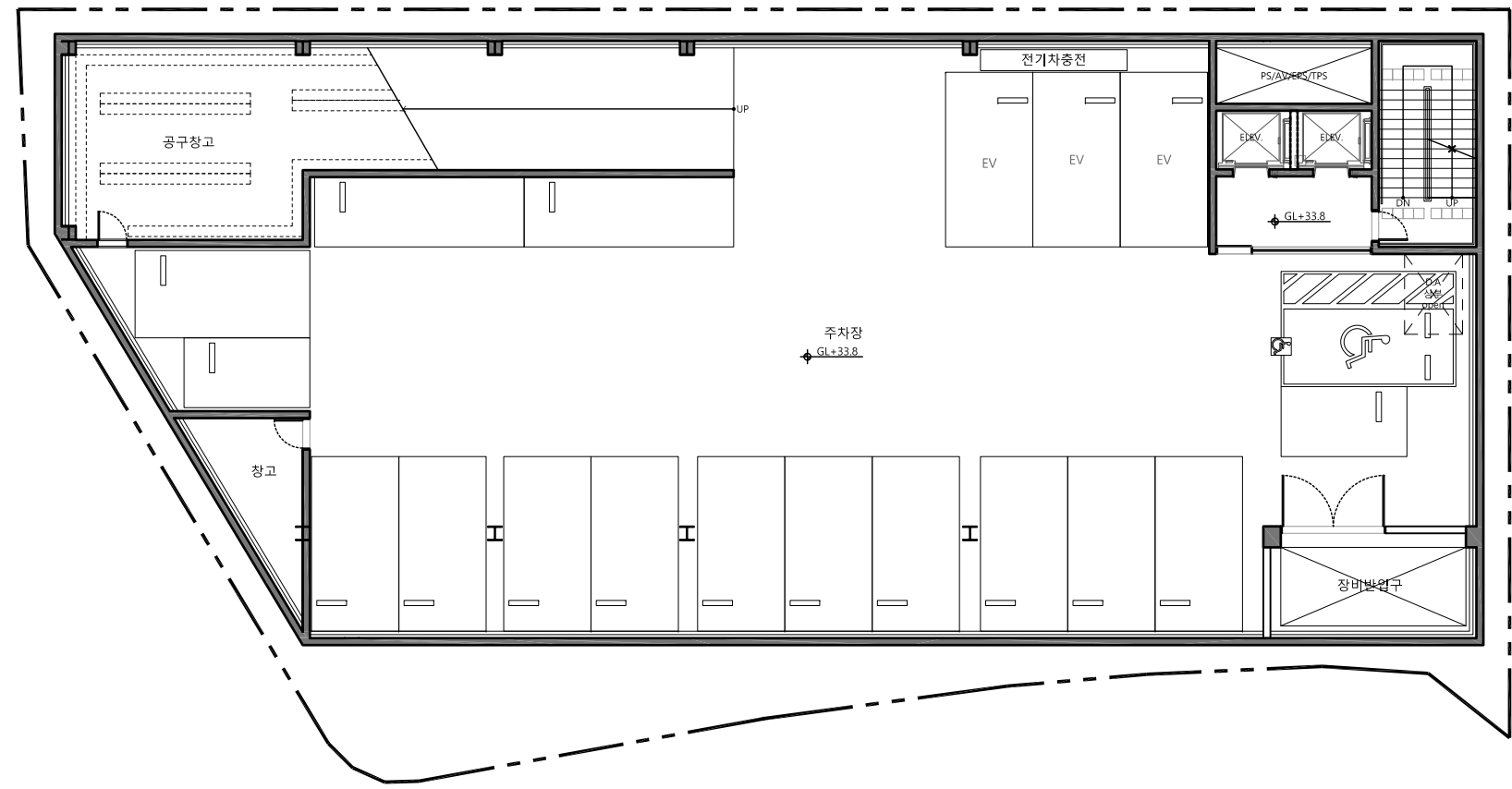


1 지하2층 평면도  
축척 : 1/200 (A3)

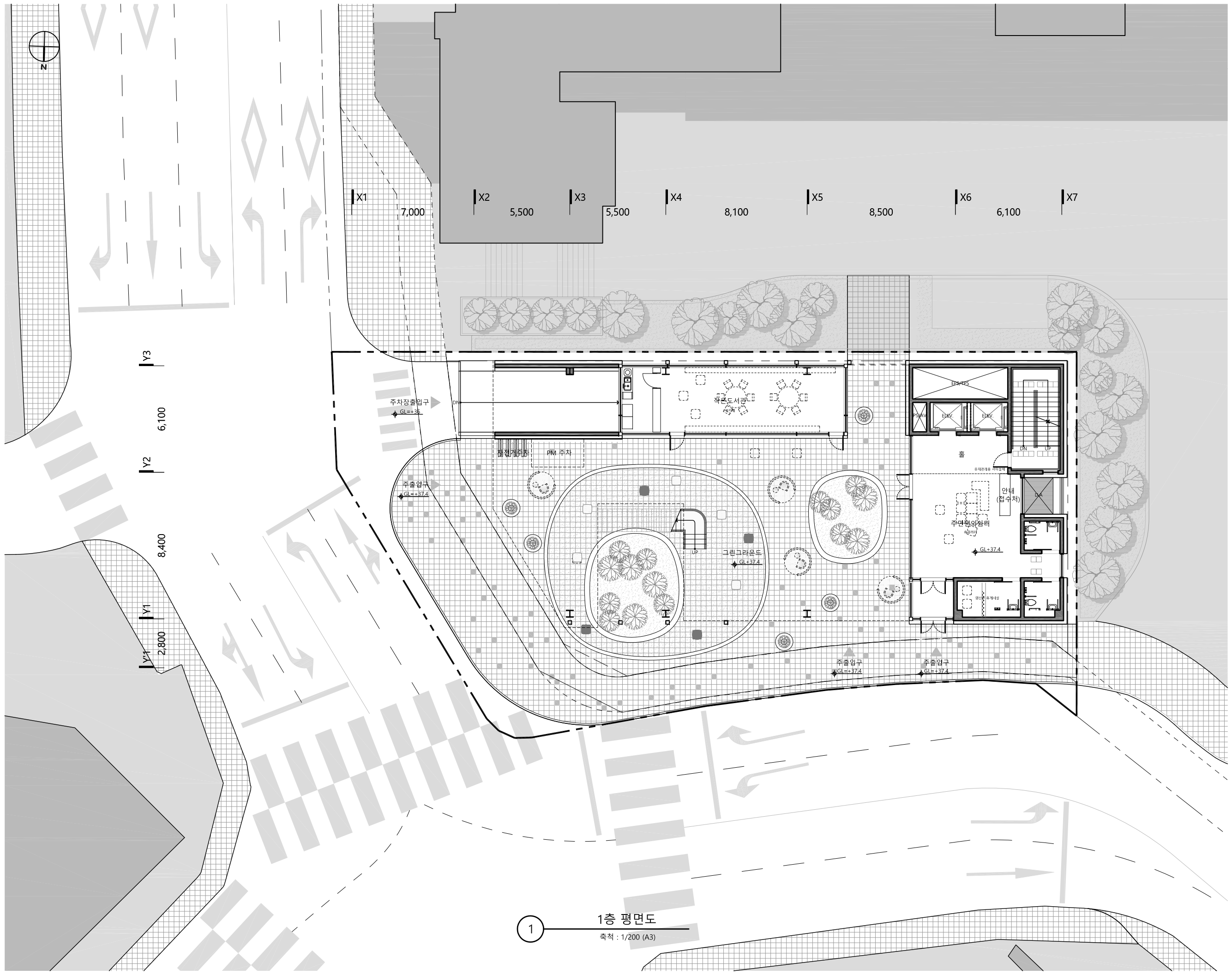


X1 7,000 X2 5,500 X3 5,500 X4 8,100 X5 8,500 X6 6,100 X7

Y3 6,100  
Y2 8,400  
Y1 2,800



1 지하1층 평면도  
축척 : 1/200 (A3)

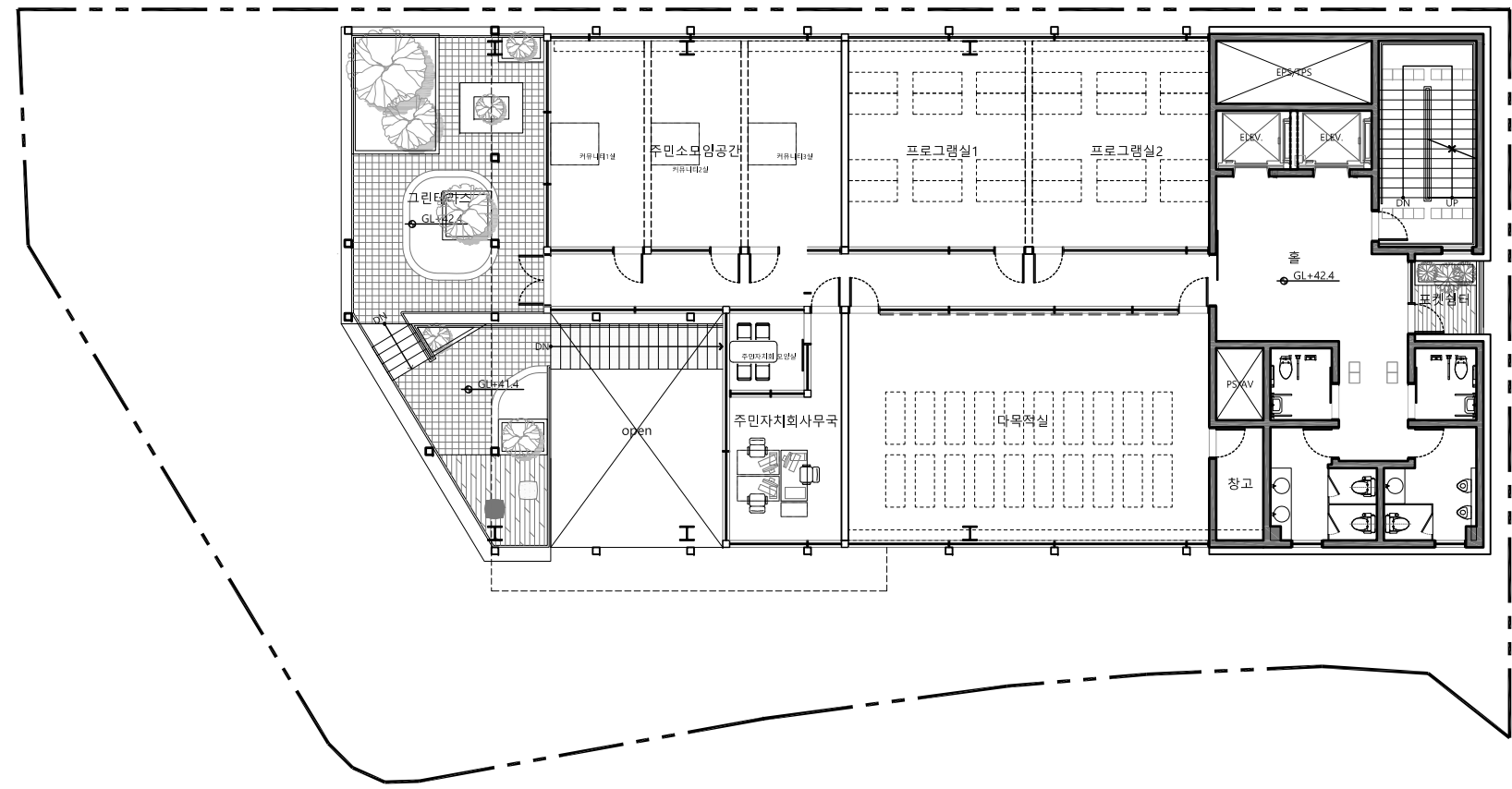


1 1층 평면도  
축척 : 1/200 (A3)



X1 7,000 X2 5,500 X3 5,500 X4 8,100 X5 8,500 X6 6,100 X7

Y3 6,100  
Y2 8,400  
Y1 2,800

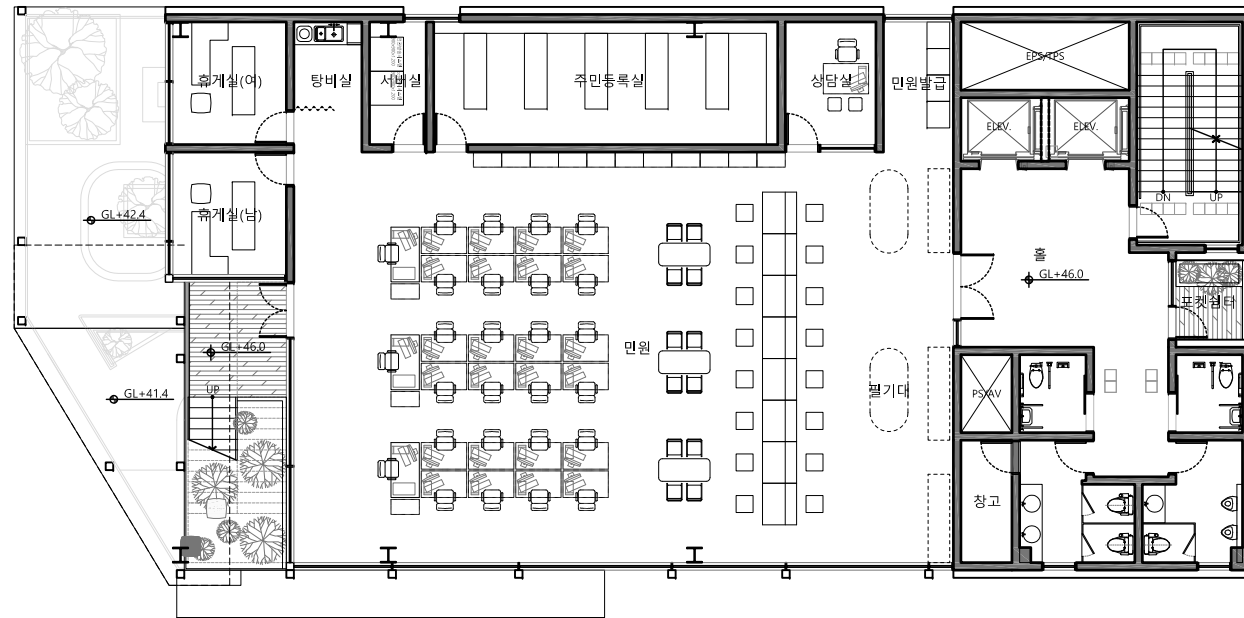


1 2층 평면도  
축척 : 1/200 (A3)



X1 7,000 X2 5,500 X3 5,500 X4 8,100 X5 8,500 X6 6,100 X7

Y3 6,100  
Y2 8,400  
Y1 2,800

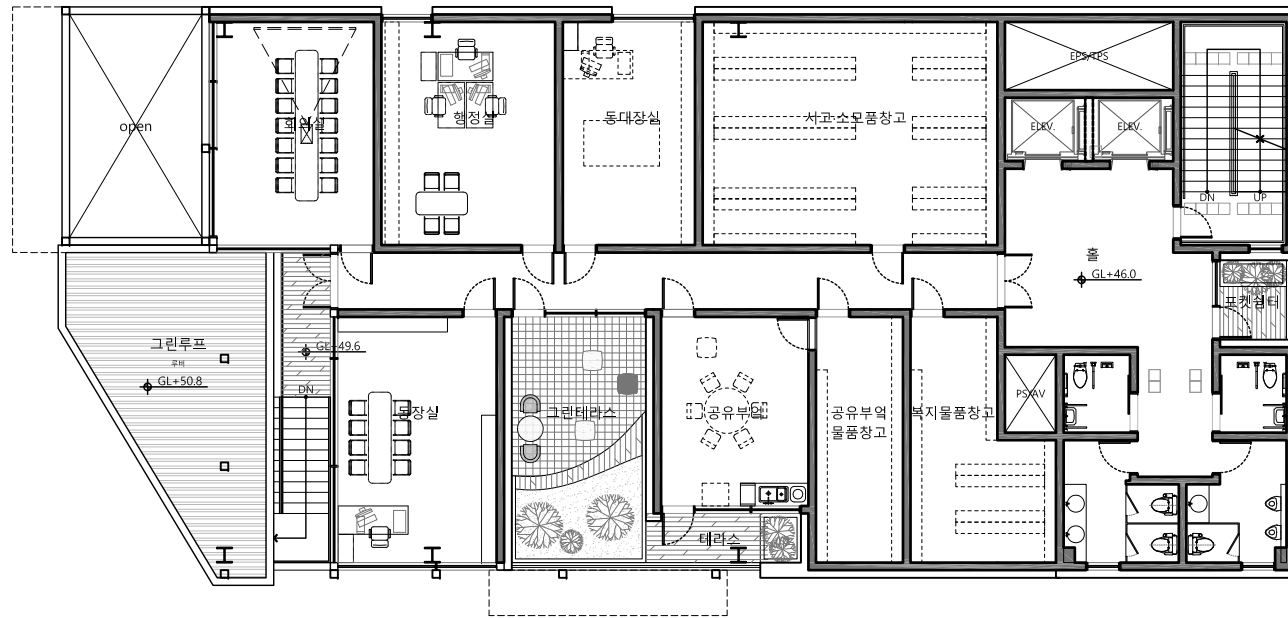


1 3층 평면도  
축척 : 1/200 (A3)



X1 7,000 X2 5,500 X3 5,500 X4 8,100 X5 8,500 X6 6,100 X7

Y3 6,100  
Y2 8,400  
Y1 2,800

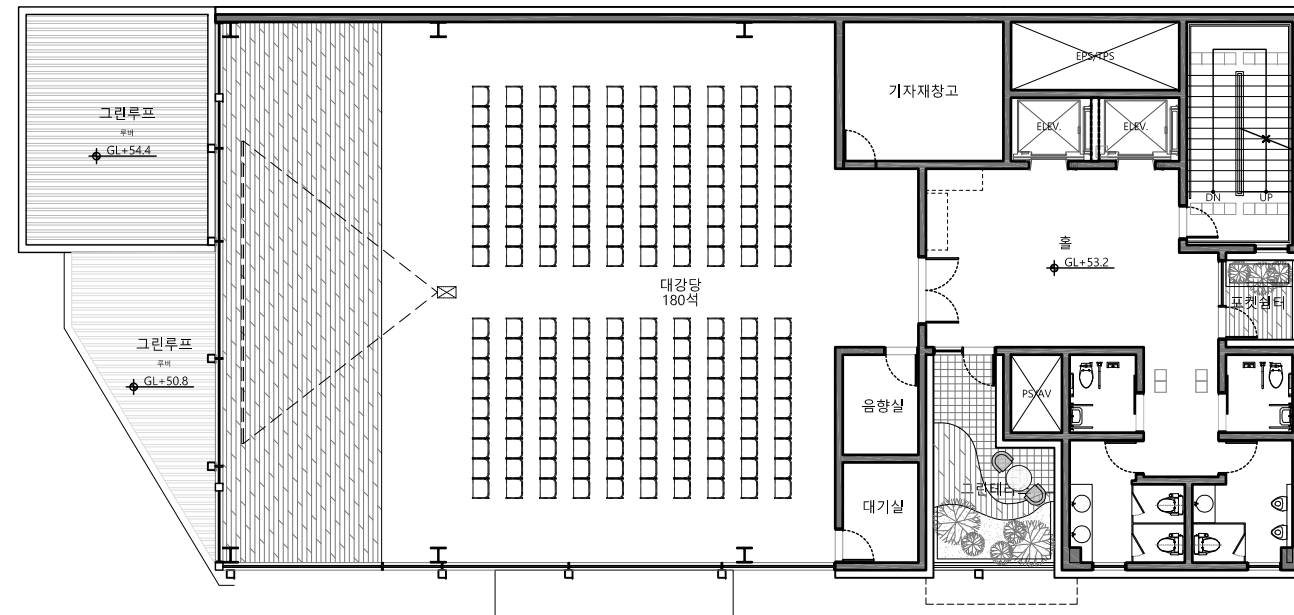


1 4층 평면도  
축척 : 1/200 (A3)



X1 7,000 X2 5,500 X3 5,500 X4 8,100 X5 8,500 X6 6,100 X7

Y3 6,100  
Y2 8,400  
Y1 2,800



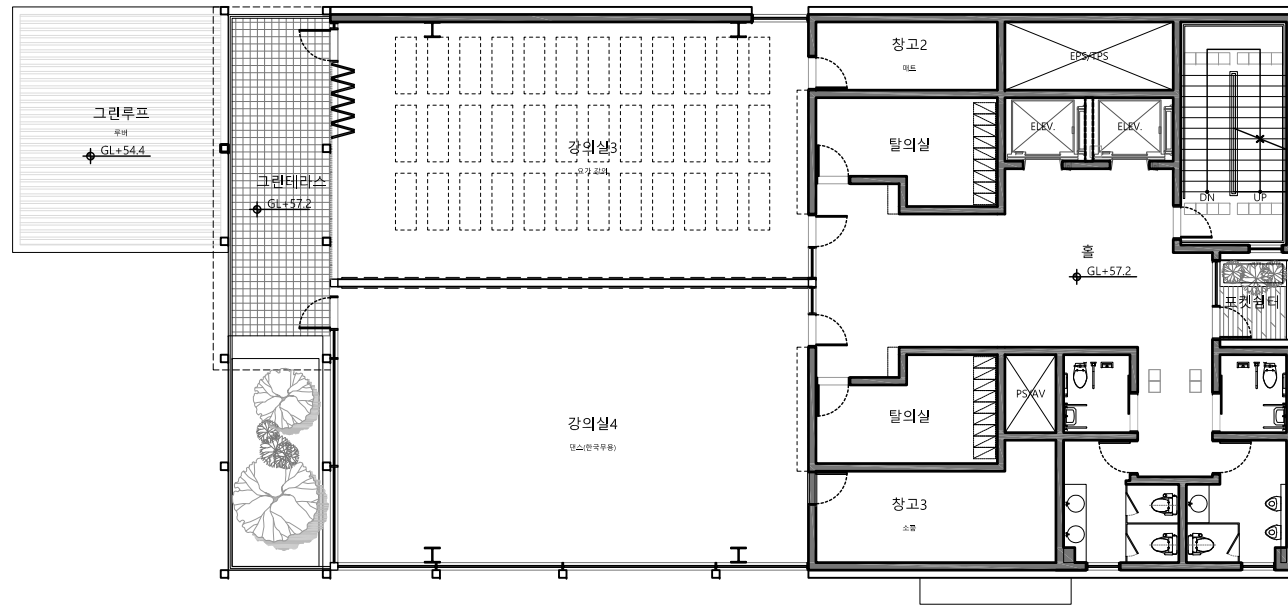
1 5층 평면도  
축척 : 1/200 (A3)





X1 7,000 X2 5,500 X3 5,500 X4 8,100 X5 8,500 X6 6,100 X7

Y3 6,100  
Y2 8,400  
Y1 2,800

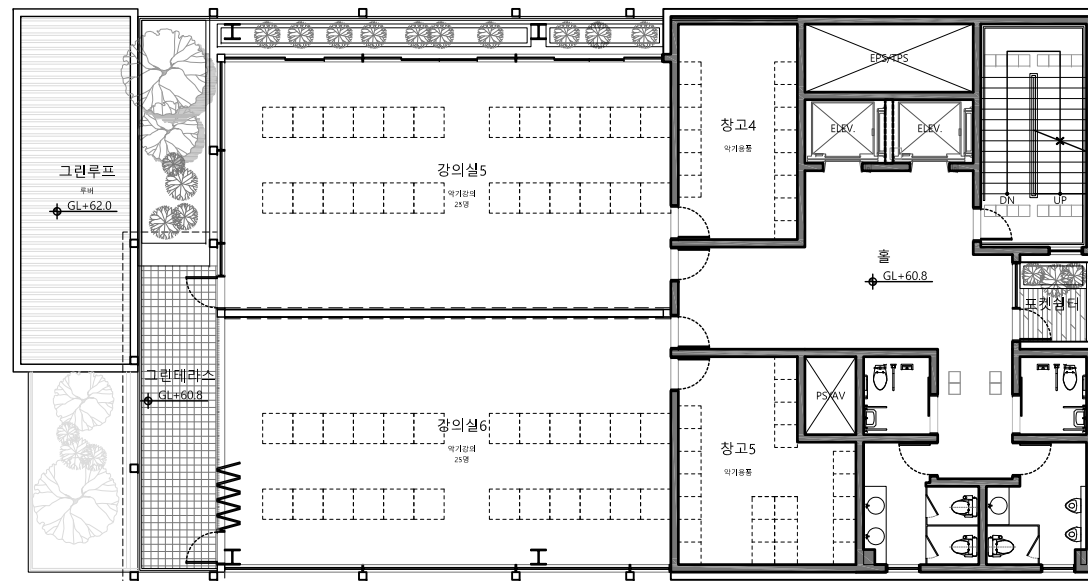


1 6층 평면도  
축척 : 1/200 (A3)



X1 7,000 X2 5,500 X3 5,500 X4 8,100 X5 8,500 X6 6,100 X7

Y3 6,100  
Y2 8,400  
Y1 2,800

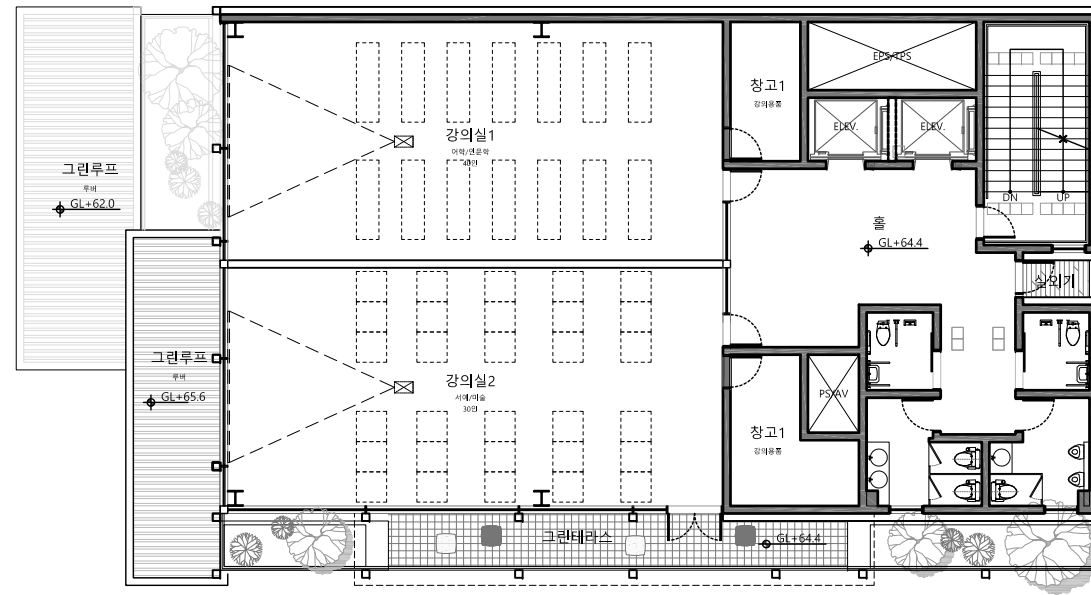


1 7층 평면도  
축척 : 1/200 (A3)



X1 7,000 X2 5,500 X3 5,500 X4 8,100 X5 8,500 X6 6,100 X7

Y3 6,100  
Y2 8,400  
Y1 2,800

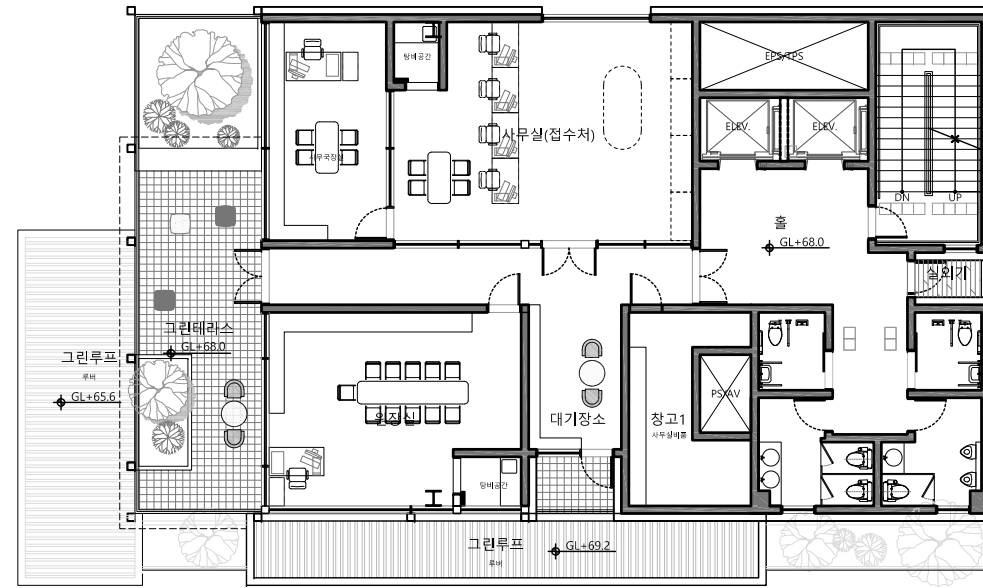


1 8층 평면도  
축척 : 1/200 (A3)



X1 7,000 X2 5,500 X3 5,500 X4 8,100 X5 8,500 X6 6,100 X7

Y3 6,100  
Y2 8,400  
Y1 2,800

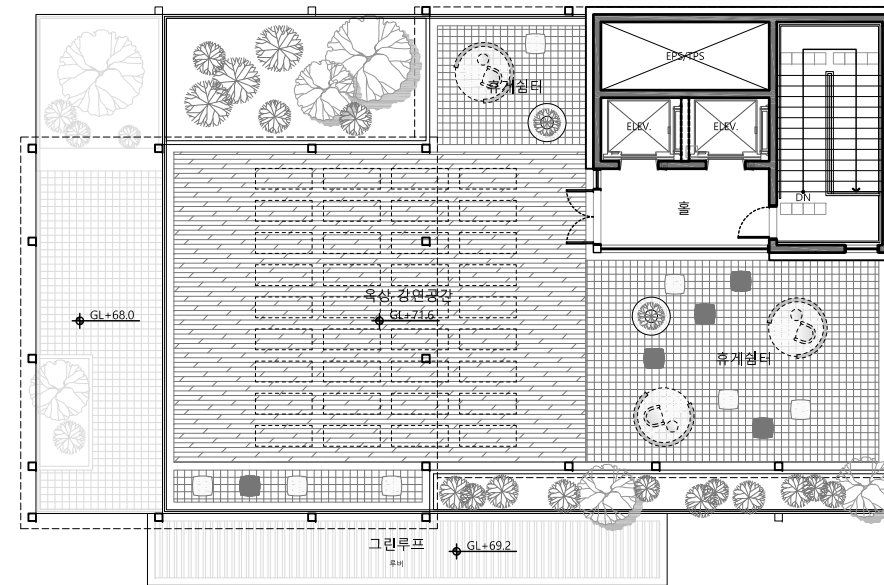


1 9층 평면도  
축척 : 1/200 (A3)



X1 7,000 X2 5,500 X3 5,500 X4 8,100 X5 8,500 X6 6,100 X7

Y3 6,100  
Y2 8,400  
Y1 2,800



1 옥상층 평면도  
축척 : 1/200 (A3)