

시점부 개착구간

본선터널

터널1구간
성산: 1km103.8-2km000
일직: 1km101 ~1km980

환기구#1

터널2구간
성산: 2km000-4km080
일직: 1km980-4km112

환기구#2

터널3구간
성산: 4km080-6km760
일직: 4km112-6km805

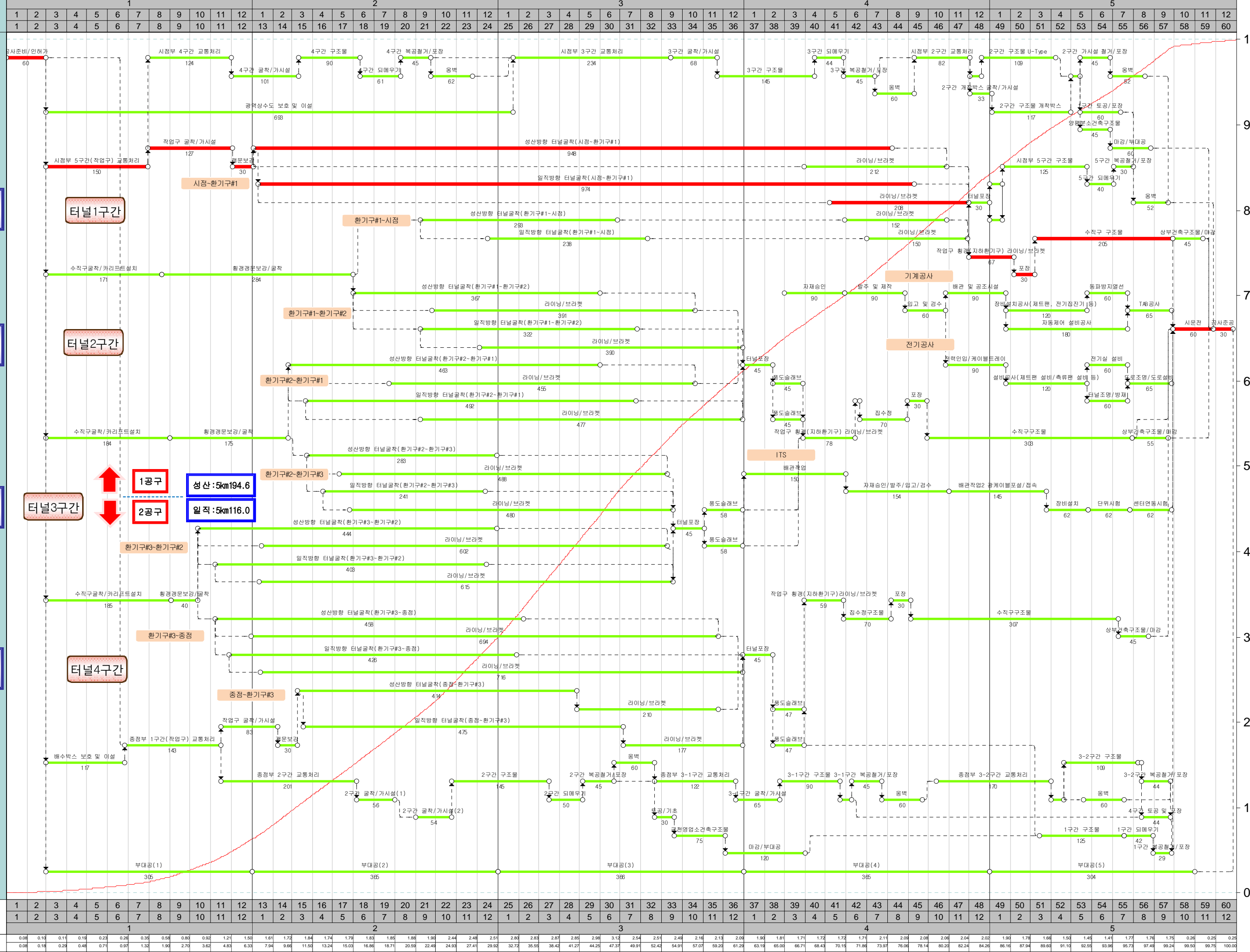
환기구#3

터널4구간
성산: 6km760-8km979.7
일직: 6km805-9km001.0

중점부 개착구간

부대공

기준계획



0.08	0.10	0.11	0.18	0.23	0.26	0.39	0.58	0.80	0.92	1.21	1.50	1.61	1.72	1.84	1.74	1.79	1.83	1.88	1.90	2.44	2.48	2.51	2.80	2.83	2.87	2.88	2.98	3.12	2.54	2.51	2.48	2.16	2.13	2.08	1.90	1.81	1.71	1.72	1.72	1.71	2.11	2.09	2.08	2.06	2.04	2.02	1.90	1.78	1.68	1.50	1.45	1.41	1.71	1.76	1.75	1.75	0.26	0.25	0.25
0.08	0.18	0.29	0.48	0.71	0.97	1.32	1.90	2.70	3.62	4.83	6.33	7.94	9.66	11.50	13.24	15.03	16.88	18.71	20.59	22.49	24.93	27.41	29.92	32.72	35.95	38.42	41.27	44.25	47.37	49.91	52.42	54.91	57.07	59.20	61.29	63.19	65.00	66.71	68.43	70.15	71.86	73.97	76.08	78.14	80.20	82.24	84.26	86.16	87.94	89.60	91.10	92.55	93.96	95.73	97.48	99.24	99.50	99.75	100.00