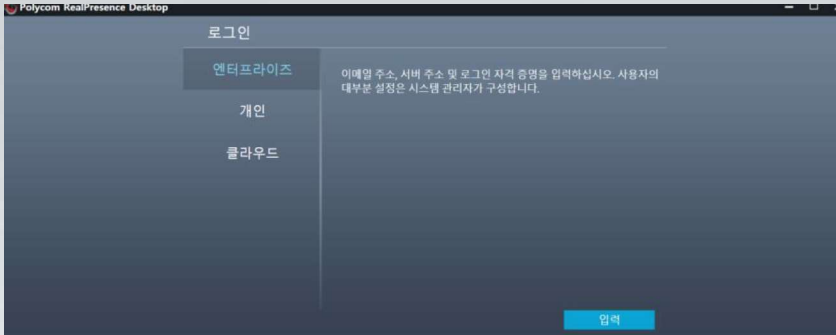
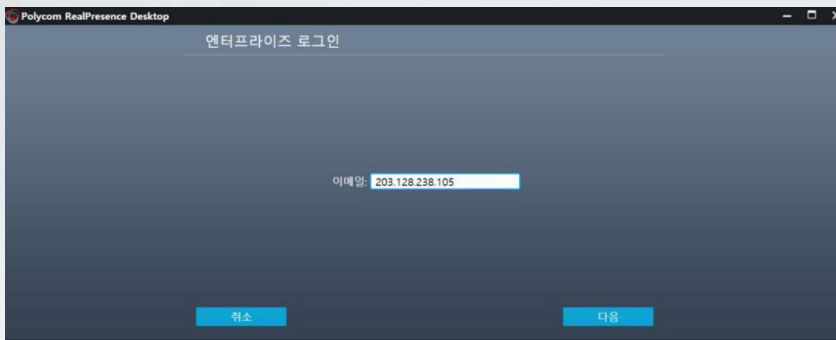


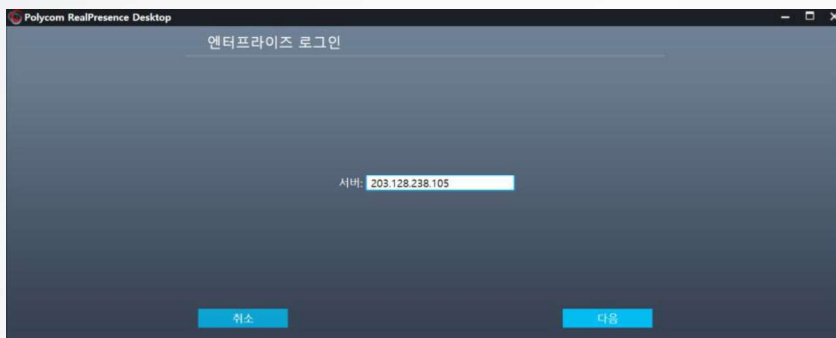
RPD 접속 방법



1. 엔터프라이즈 (입력)



2. 엔터프라이즈 로그인
- 이메일 입력
- 203.128.238.105

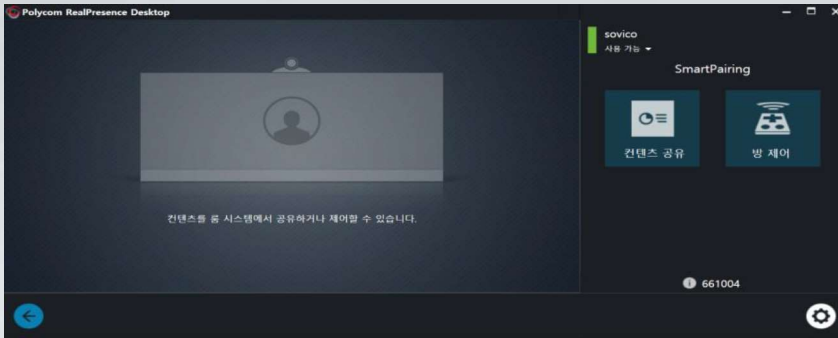


3. 엔터프라이즈 로그인
- 서버 입력
- 203.128.238.105

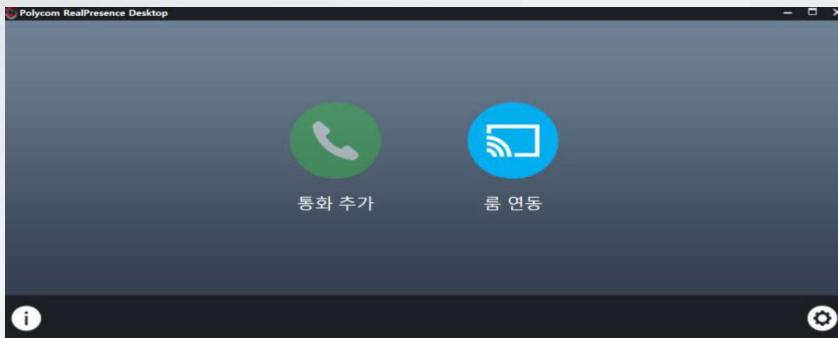


4. 엔터프라이즈 로그인
- 사용자 이름
: seoul1 ~ 5
- 암호
: 12345qwerty

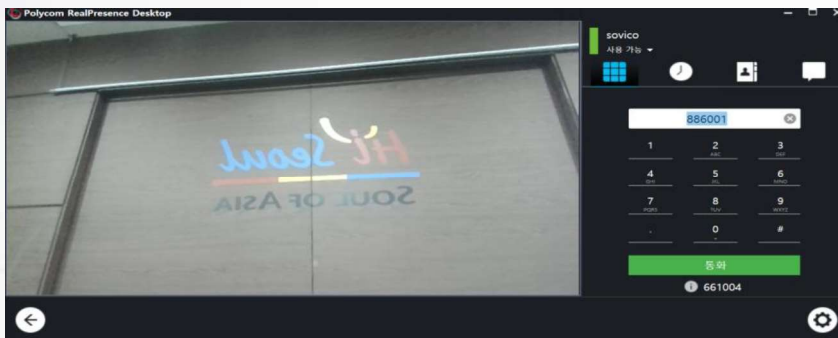
RPD 접속 방법



1.  (클릭)



2.  (클릭)



3. 882870 입력 후 통화