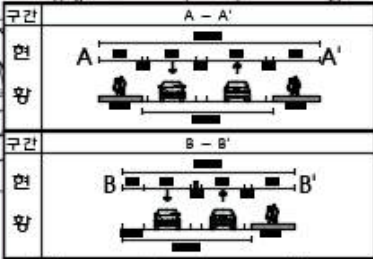


동보성(경보) (개선2)

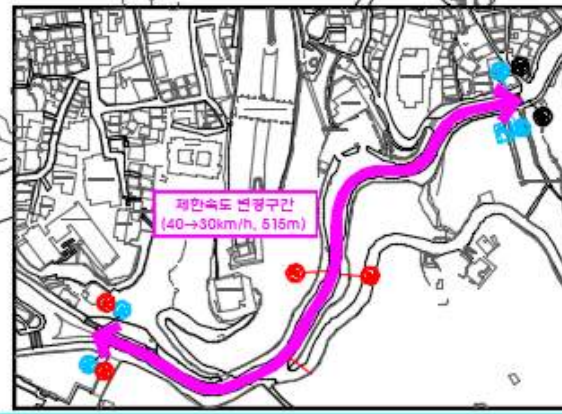
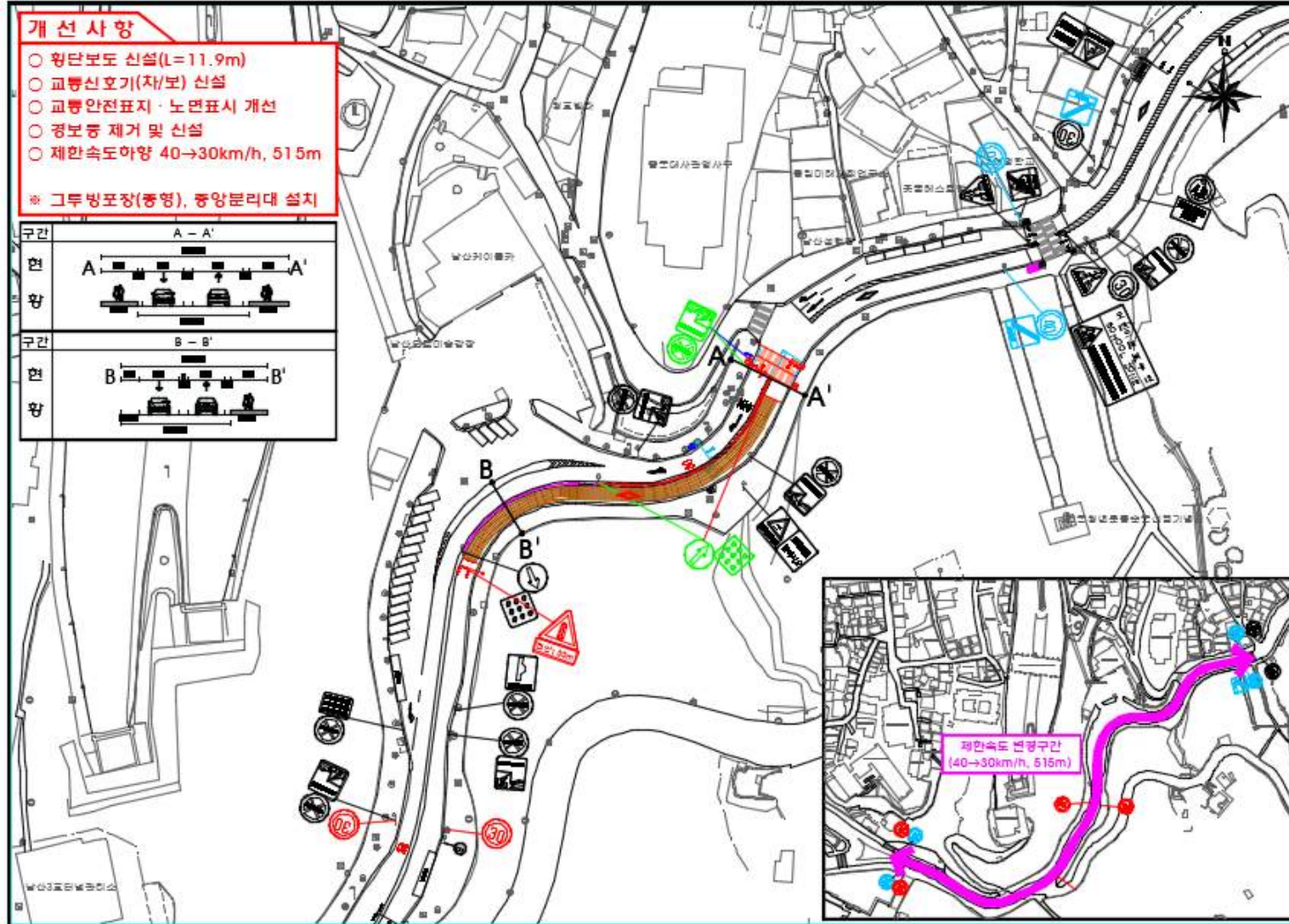
개선 사항

- 횡단보도 신설(L=11.9m)
- 교통신호기(차/보) 신설
- 교통안전표지·노면표시 개선
- 경보등 제거 및 신설
- 제한속도하양 40→30km/h, 51.5m

※ 그루빙포장(중형), 중앙분리대 설치



KEYMAP



01	02	03	04	05	06	07
1001						
1002						

[? ?]	?	?
[? ?]	?	?
[? ?]	?	?
[? ?]	?	?