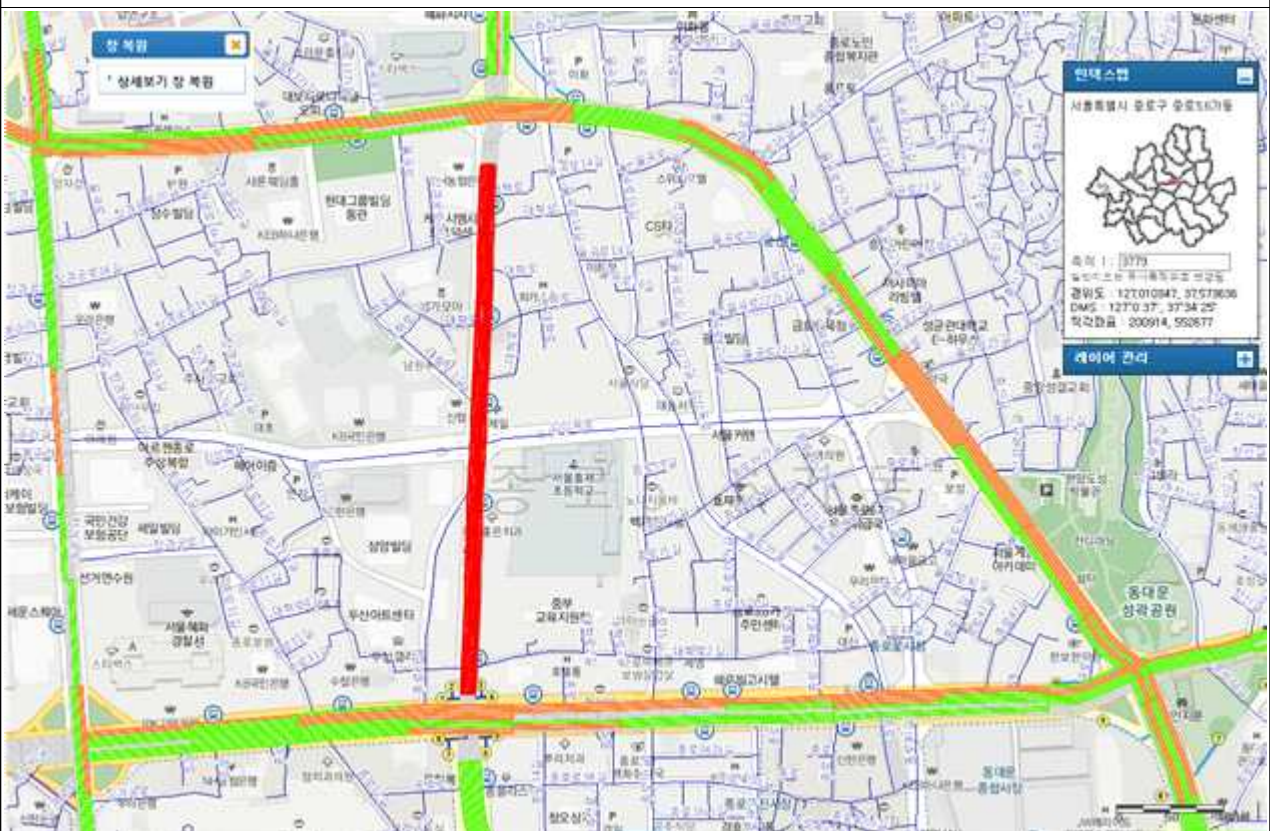


2018년 노후포장도로 공사계획 위치도(1,2구역)

1. 한글비석로(마들역교차로~동부간선도로접속부) - 1구역



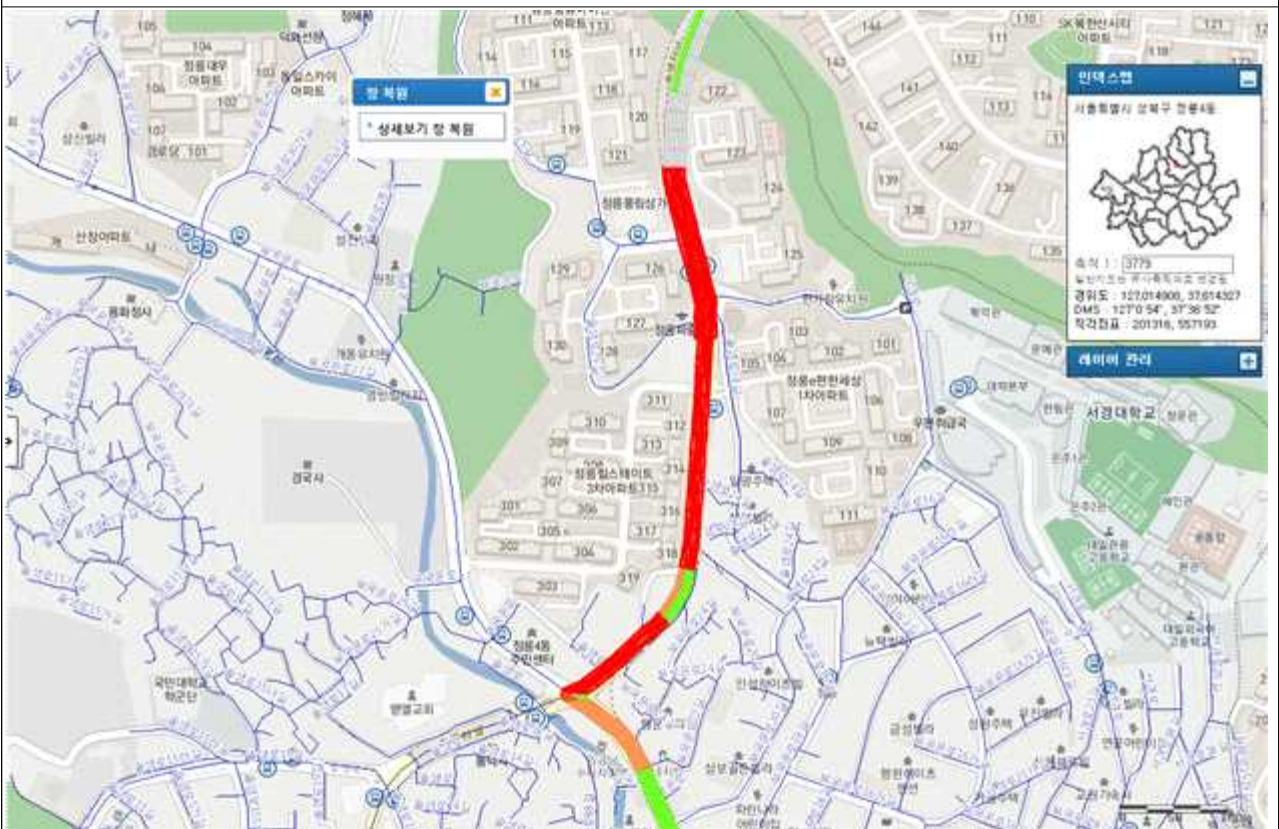
2. 대학로(울곡로~종로) - 2구역



5.사직로(사직터널입구~동십자각) - 2구역



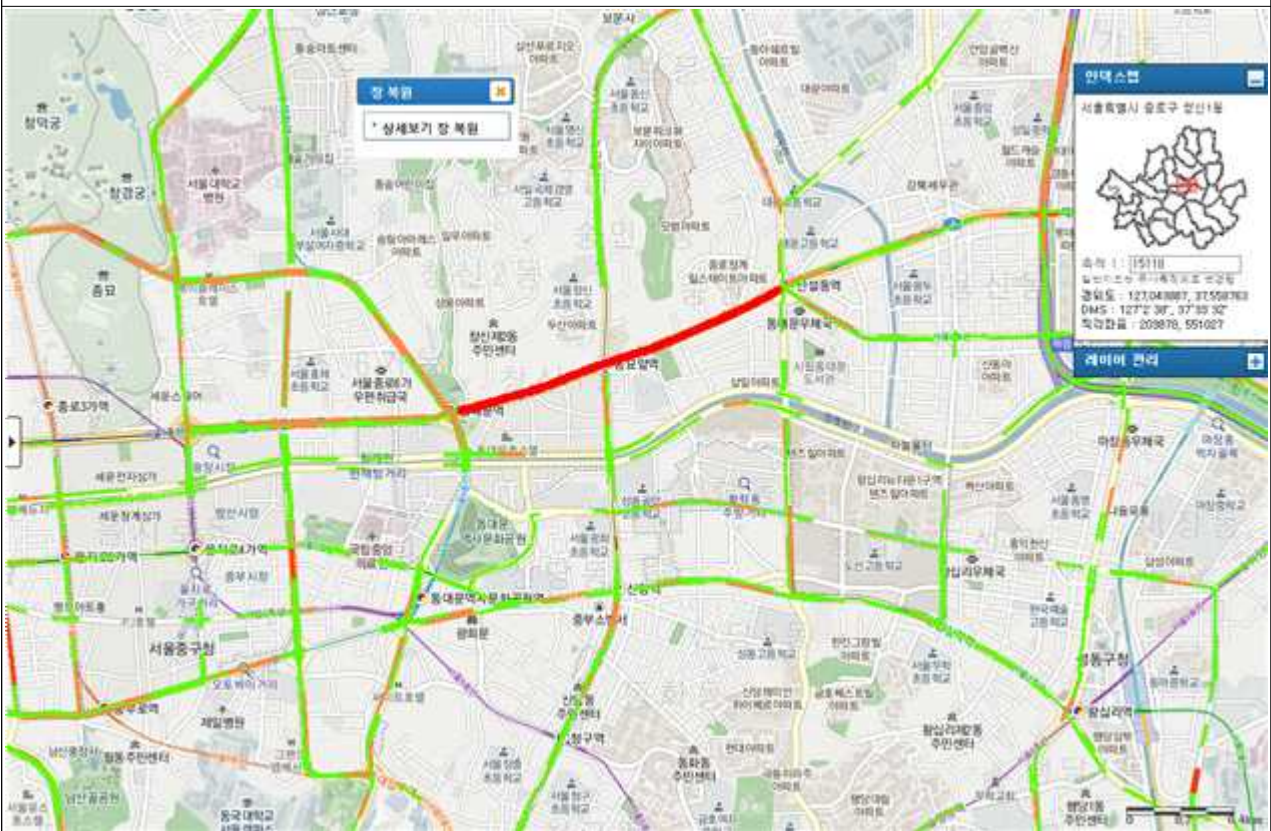
7.솔샘로(솔샘터널~정릉4동주민센터사거리) - 1구역



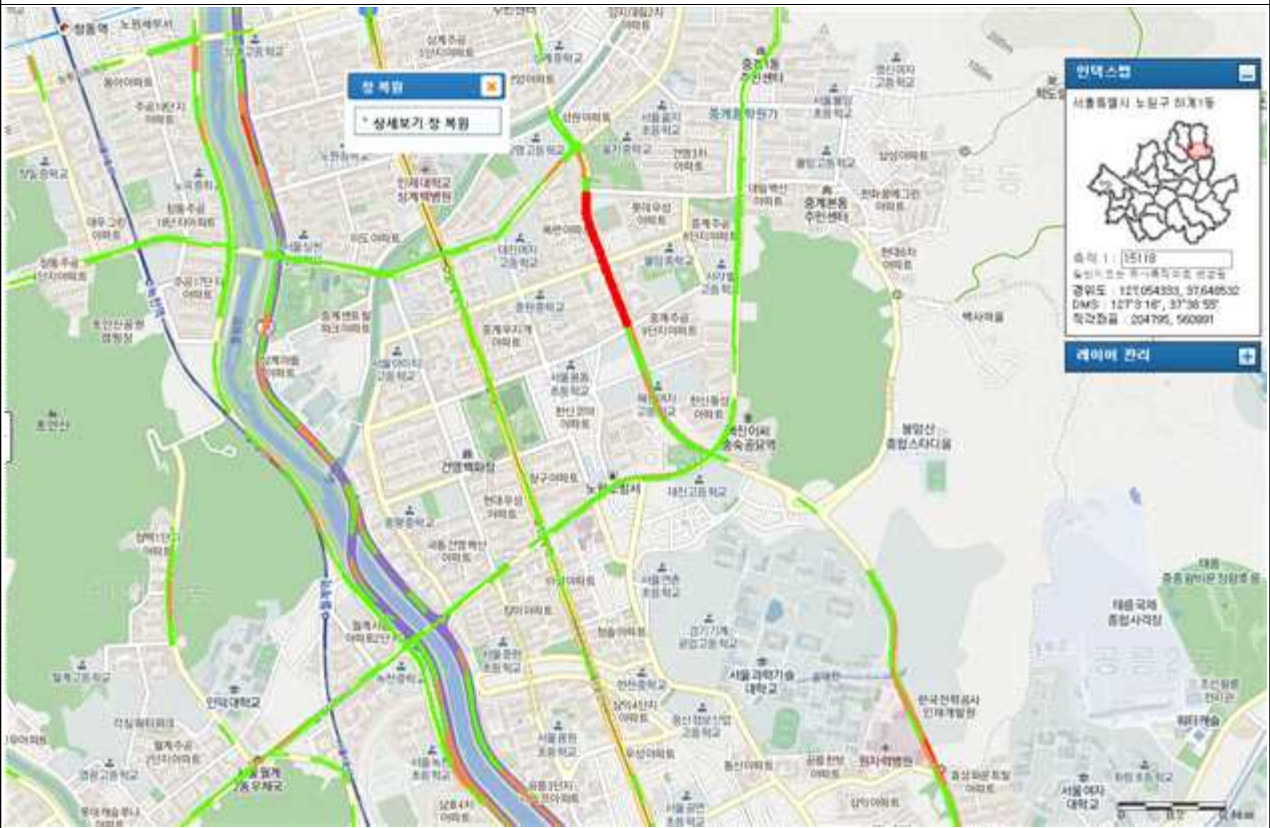
9.종로(종로4가사거리~동대문역사거리) - 서울시 버스차로공사로 제외



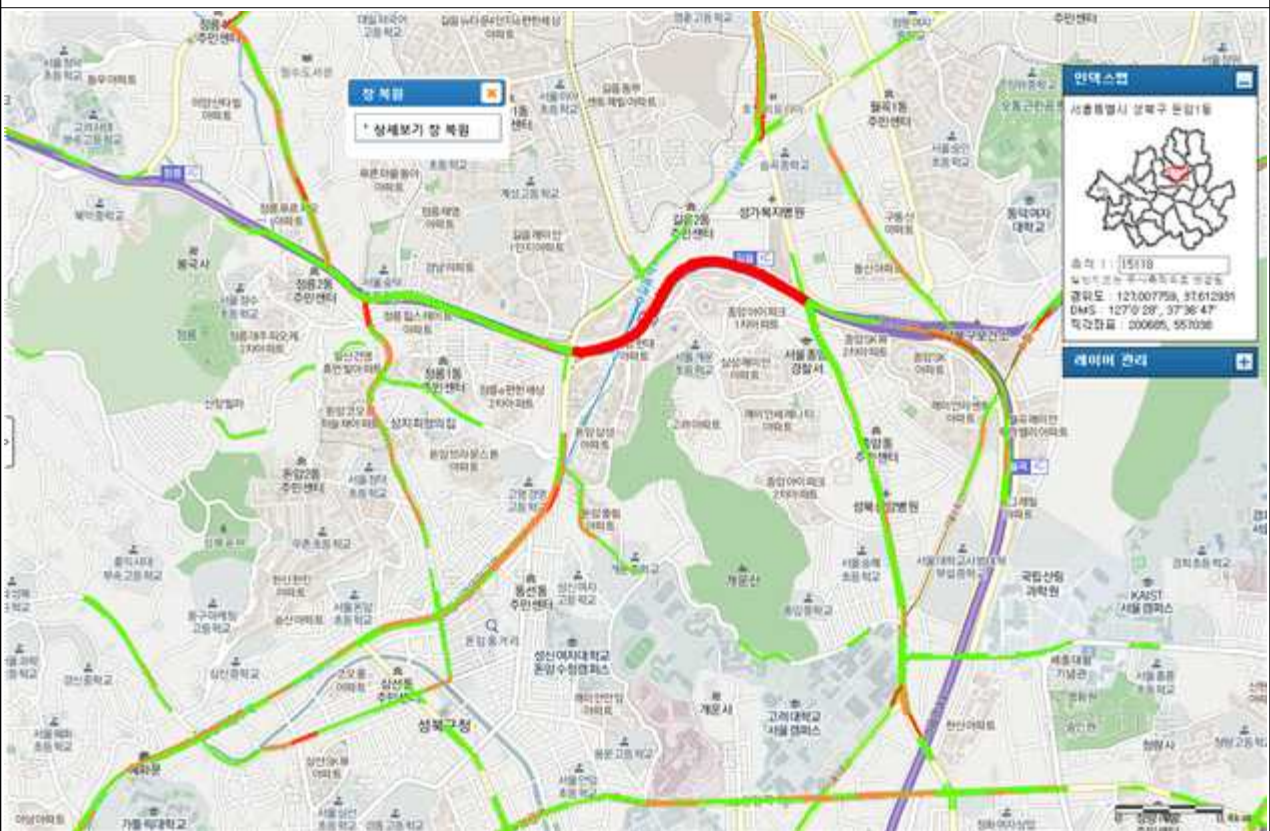
10.종로(동대문역사사거리~신설동역사사거리)- 서울시 버스차로공사로 제외



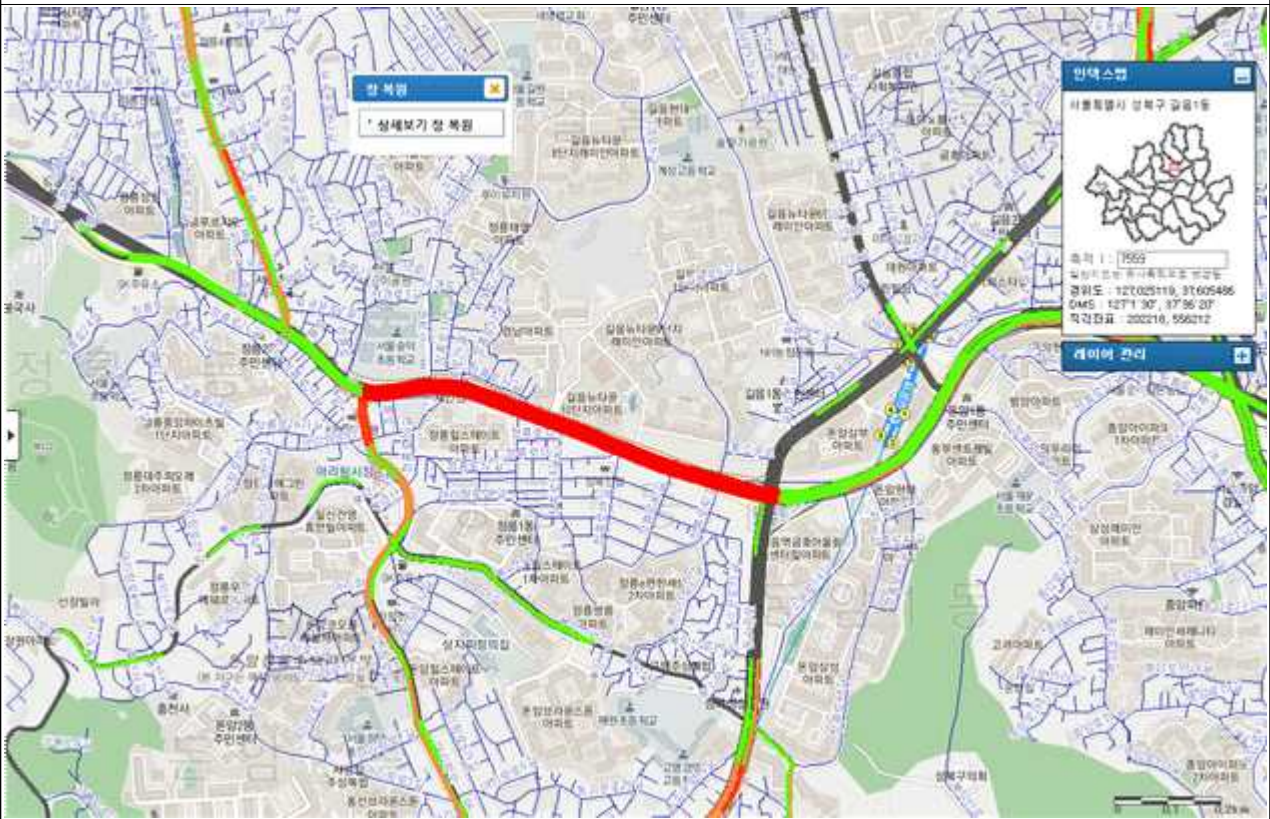
11. 노원로(구민체육센터교차로~대진고교앞교차로) - 1구역, 굴착복구과 병합



12. 정릉로(종암사거리~길음교교차로) - 1구역



13. 정릉로(길음교교차로~정릉입구사거리) - 1구역



14. 화랑로(종암사거리~코업레지던스) - 1구역, 굴착복구시행도로와 병합



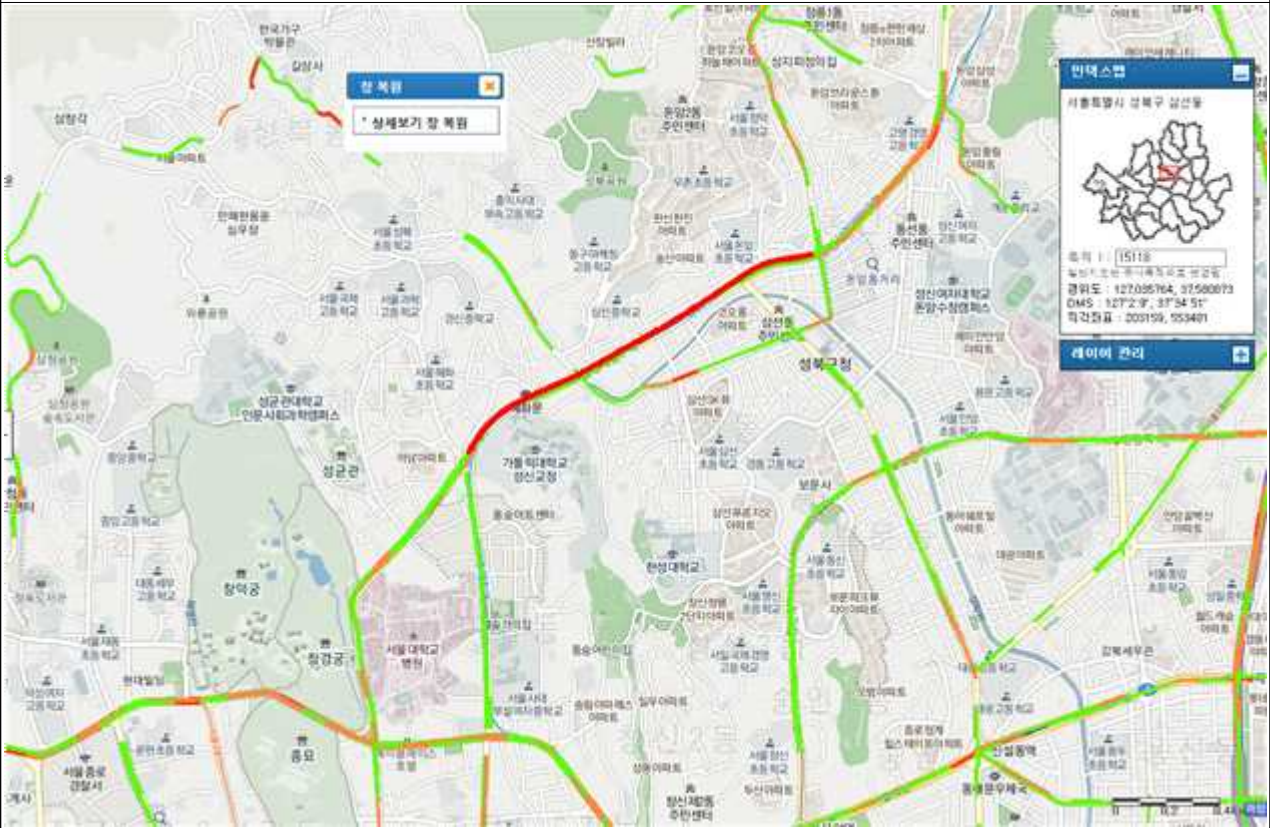
15. 월계로(월계2교교차로~창문여고) - 1구역



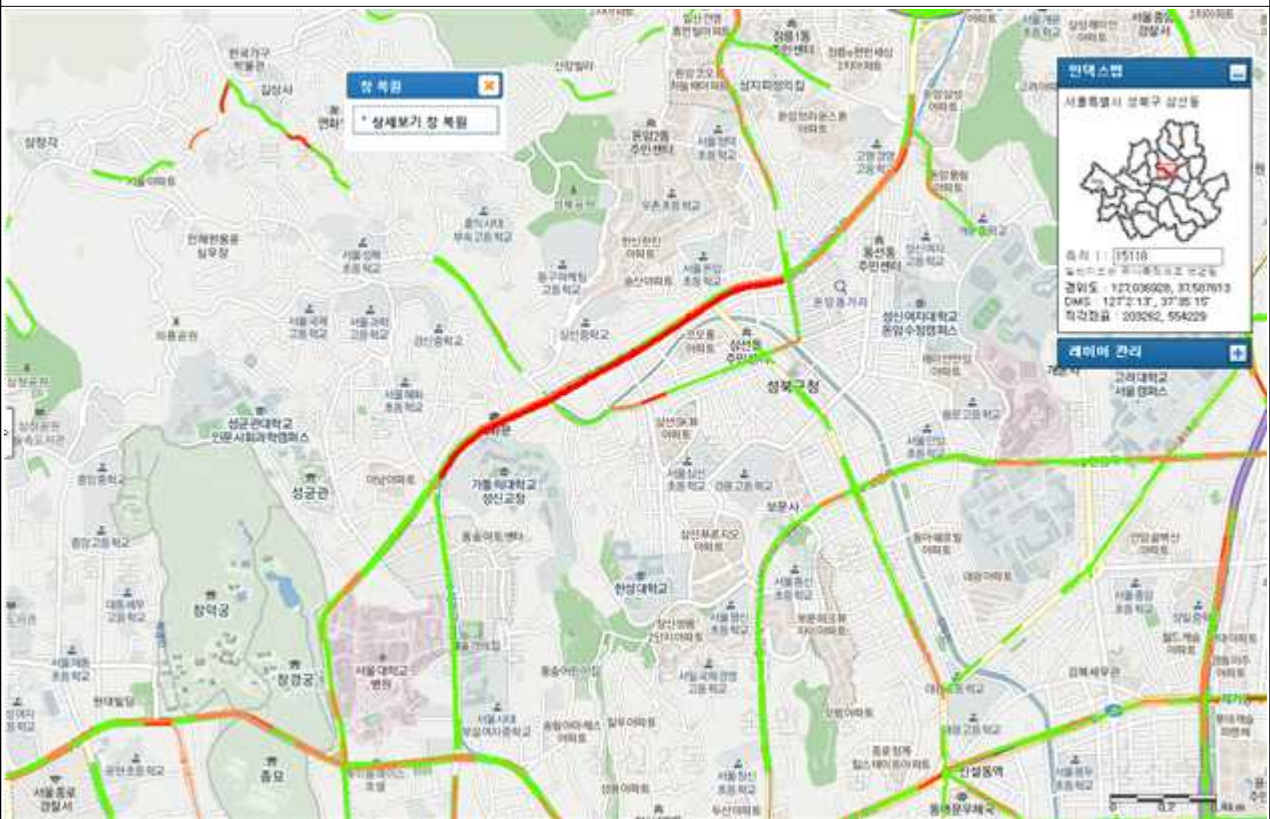
16. 한천로(월계2교교차로~장위사거리) - 1구역



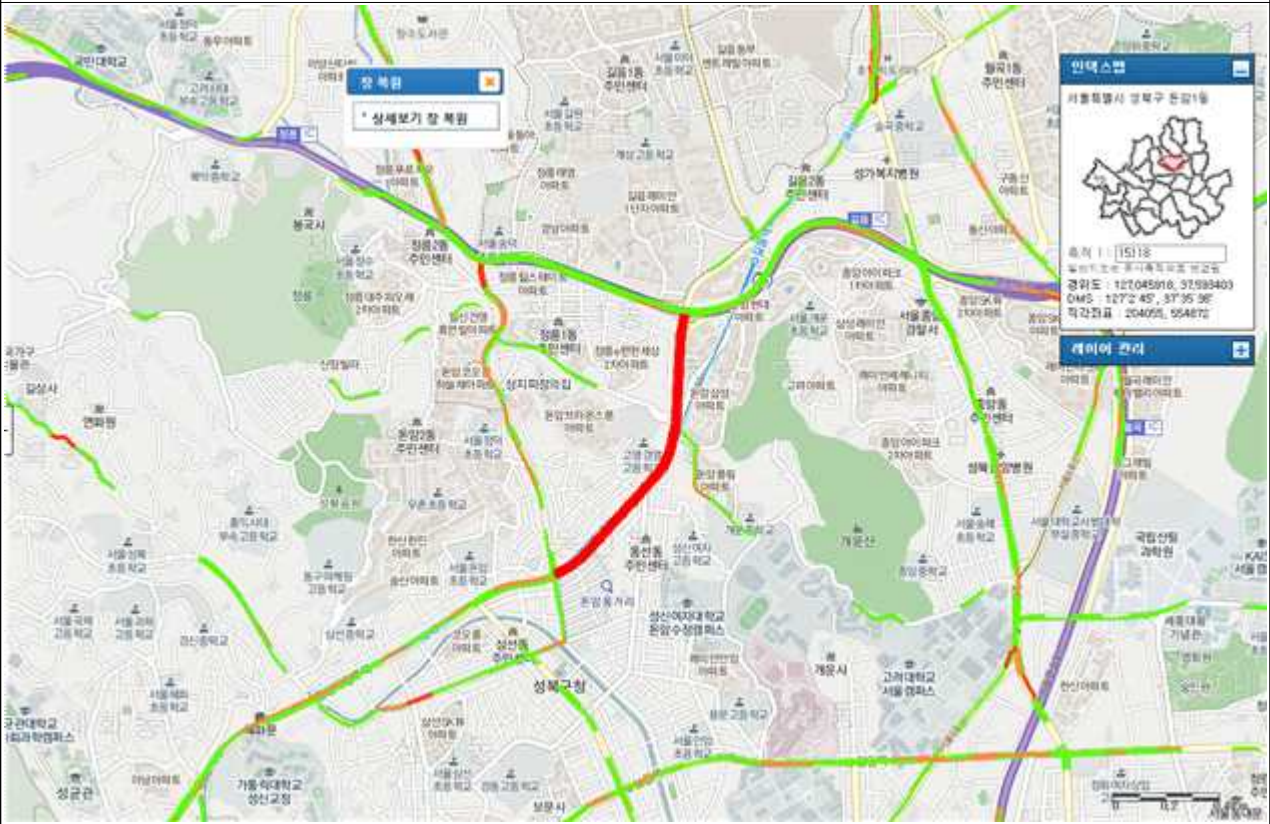
17. 동소문로(성신여대입구역~혜화로터리)(하행) - 2구역



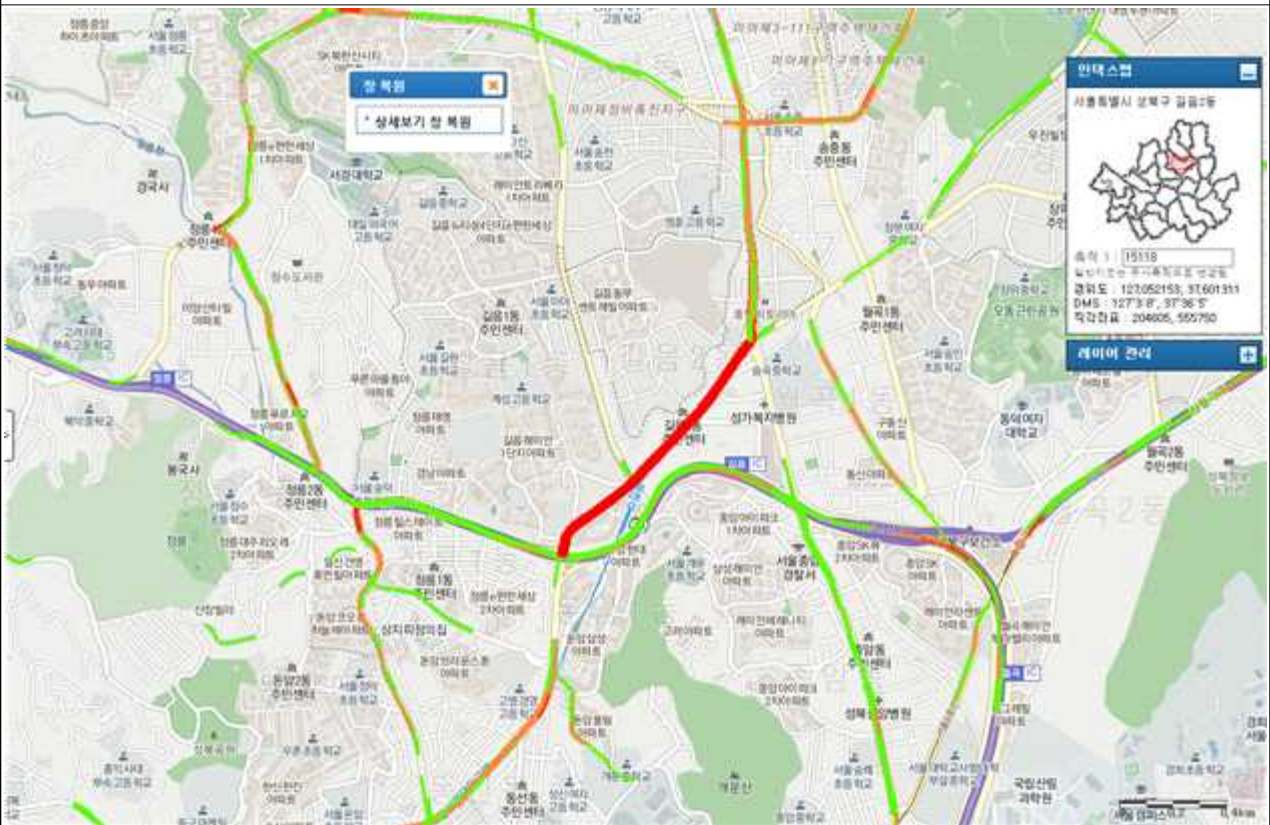
18. 동소문로(혜화로터리~성신여대입구)(상행) - 2구역



19. 동소문로(길음교교차로~성신여대입구역) - 2구역



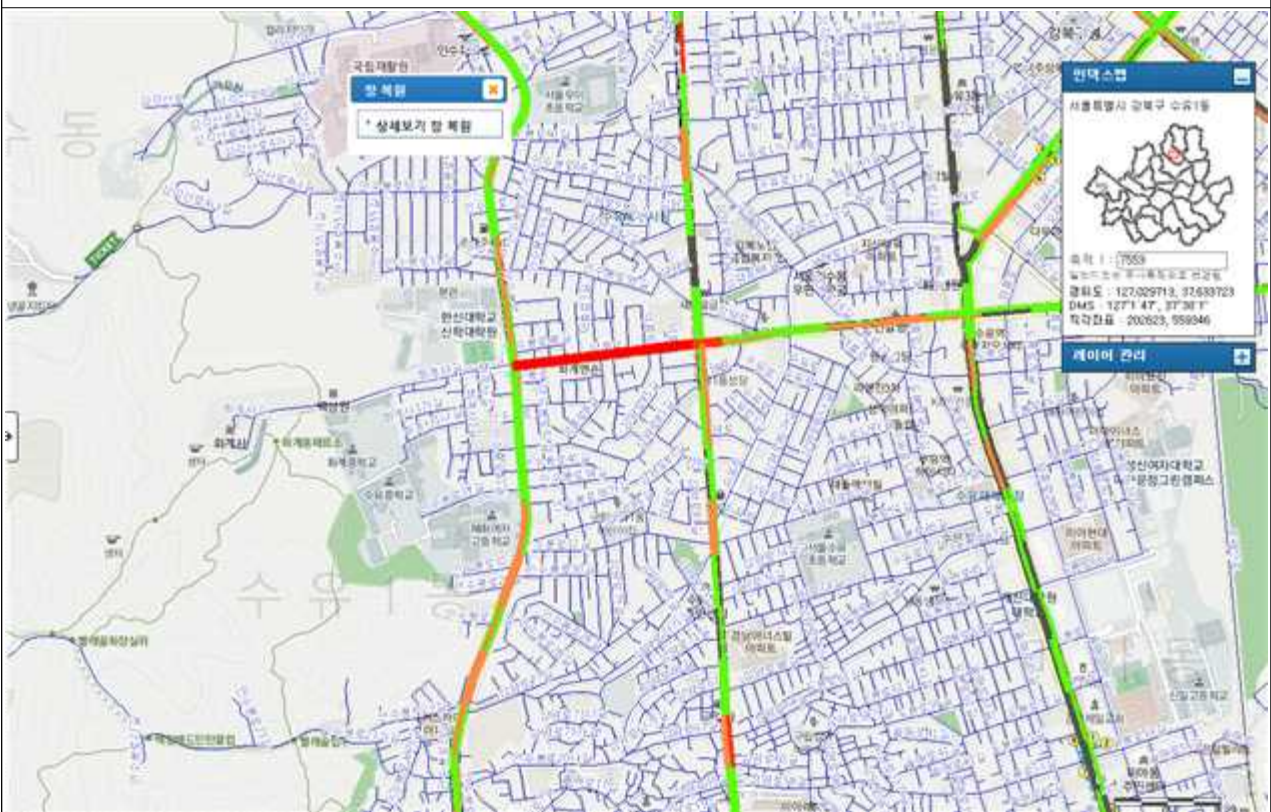
20. 동소문로(미아사거리~길음교교차로) - 2구역



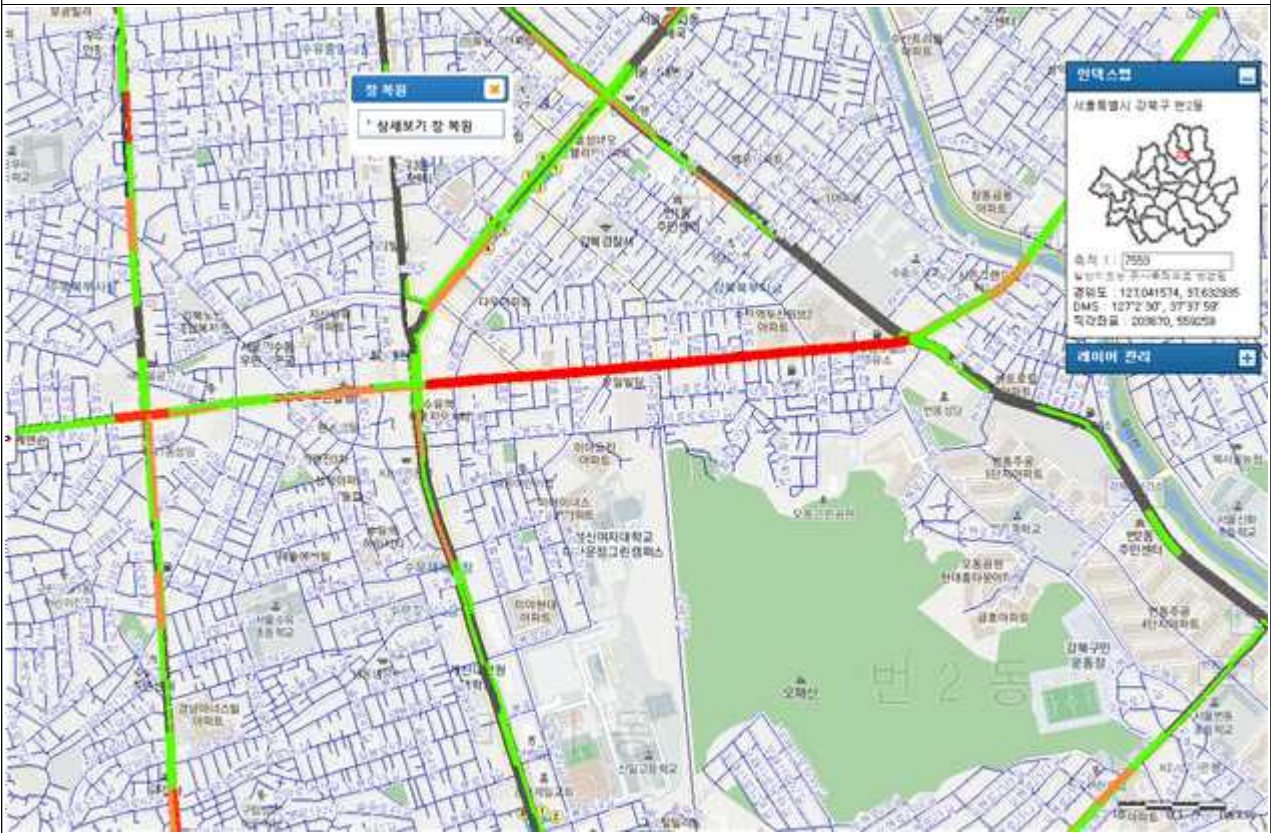
21.도봉로(수유사거리~강북구청교차로) - 1구역



22.덕릉로(화계사입구교차로~한신대교차로) - 1구역



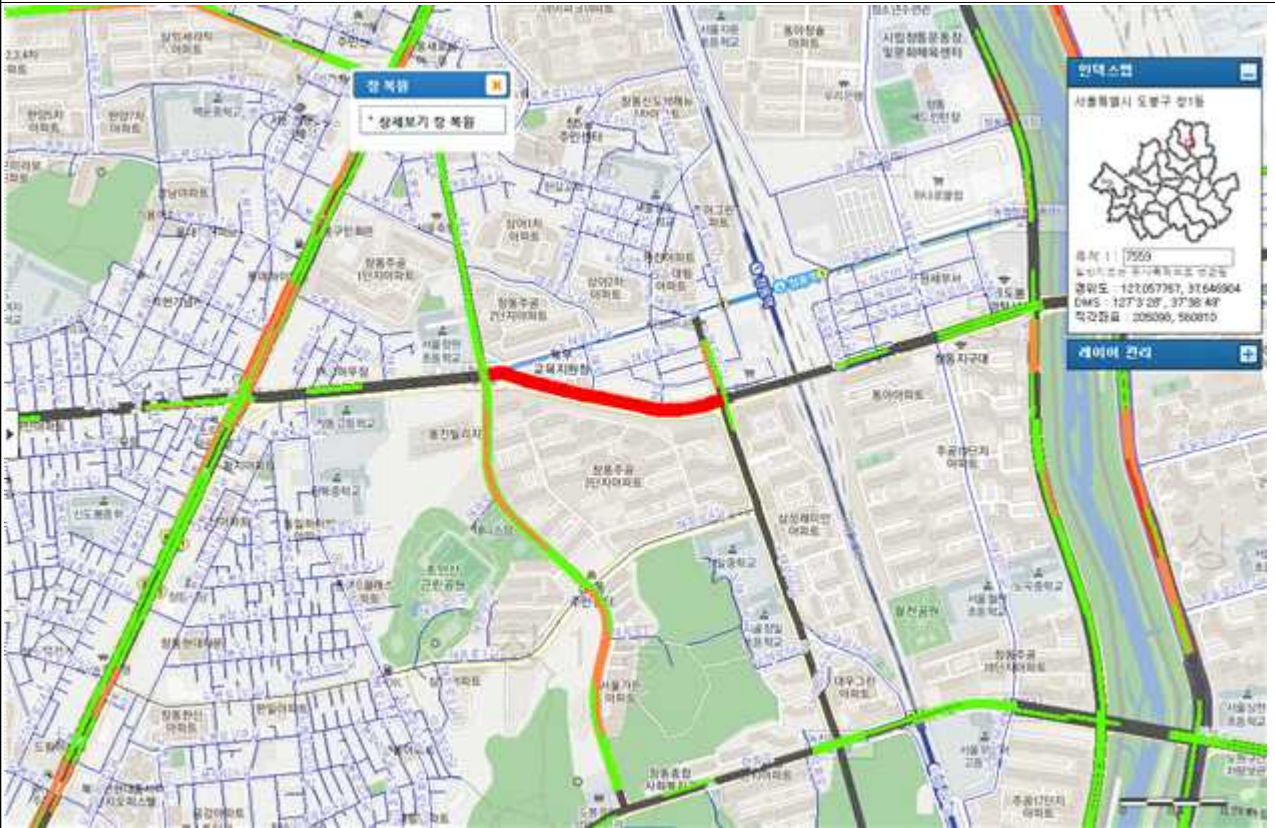
23. 덕릉로(수유사거리~화계사입구교차로) - 1구역



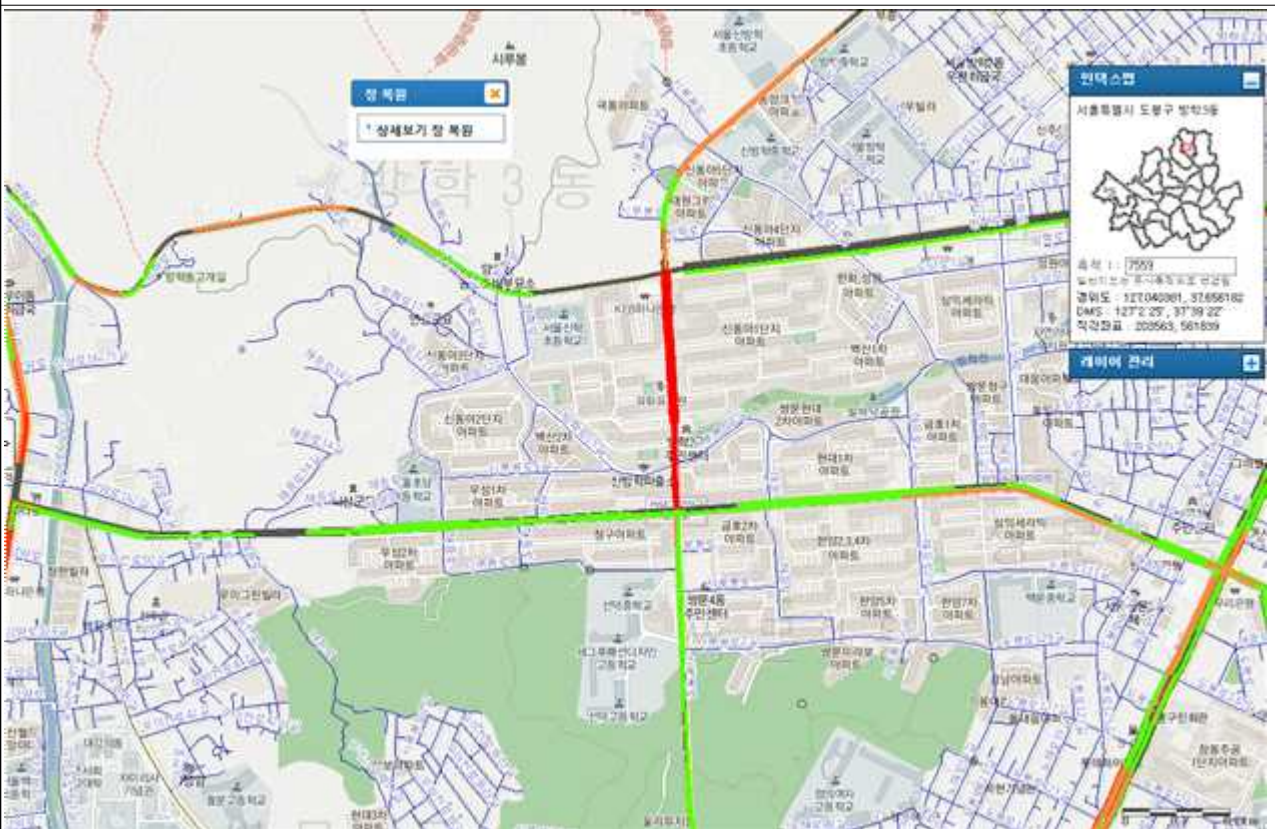
24. 해등로(창원초교사거리~해등로12길입구사거리) - 1구역



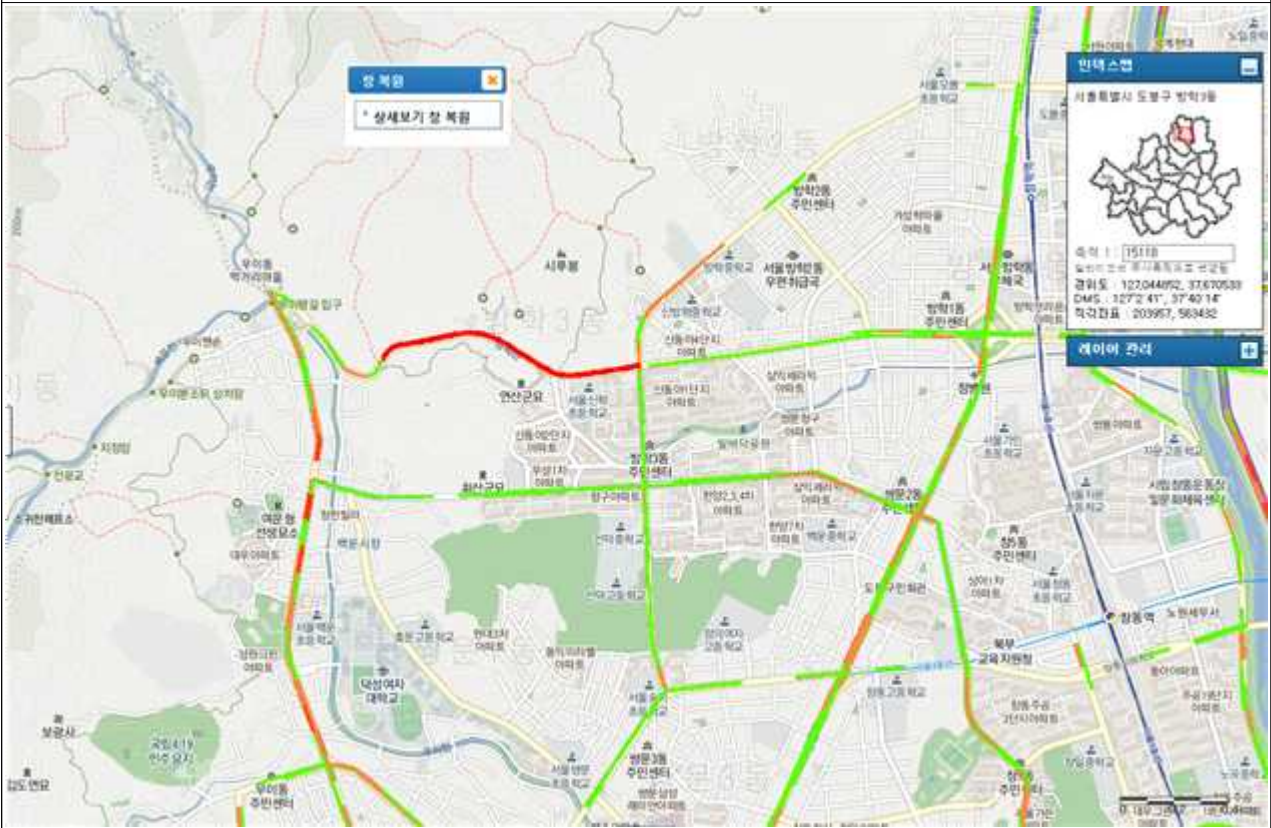
25.해등로(창원초교사거리~창동지하차도입구) - 1구역



27.시루봉로(선덕고교입구교차로~신동아아파트사거리) - 1구역



28. 방학로(신동아아파트교차로~우이동경계) - 1구역(구청공사 병합으로 제외)



29. 동소문로(성신여대입구~혜화로터리)(버스전용차로) - 2구역

