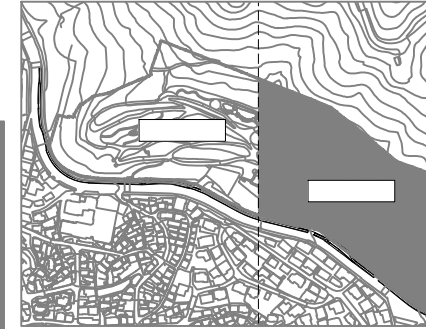


남산공원 평면도-1

SCALE =1:500

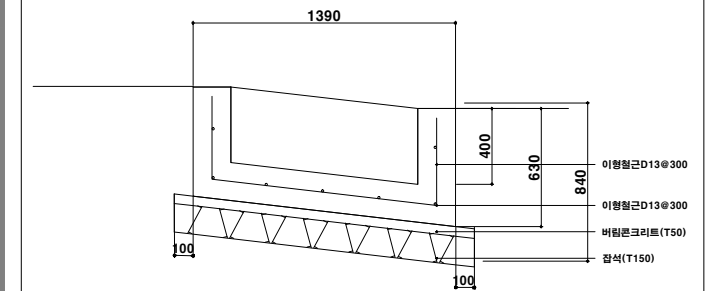


KEYMAP

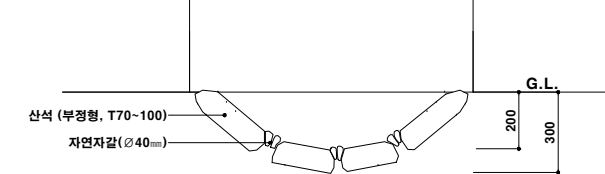


단면도

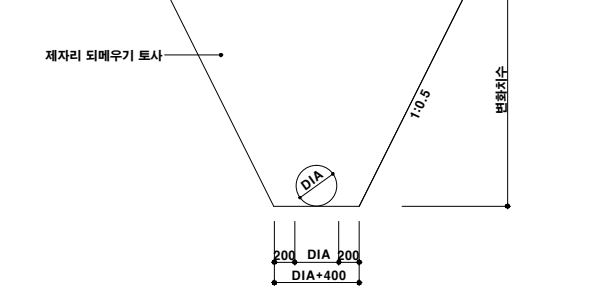
집수정



산석수로

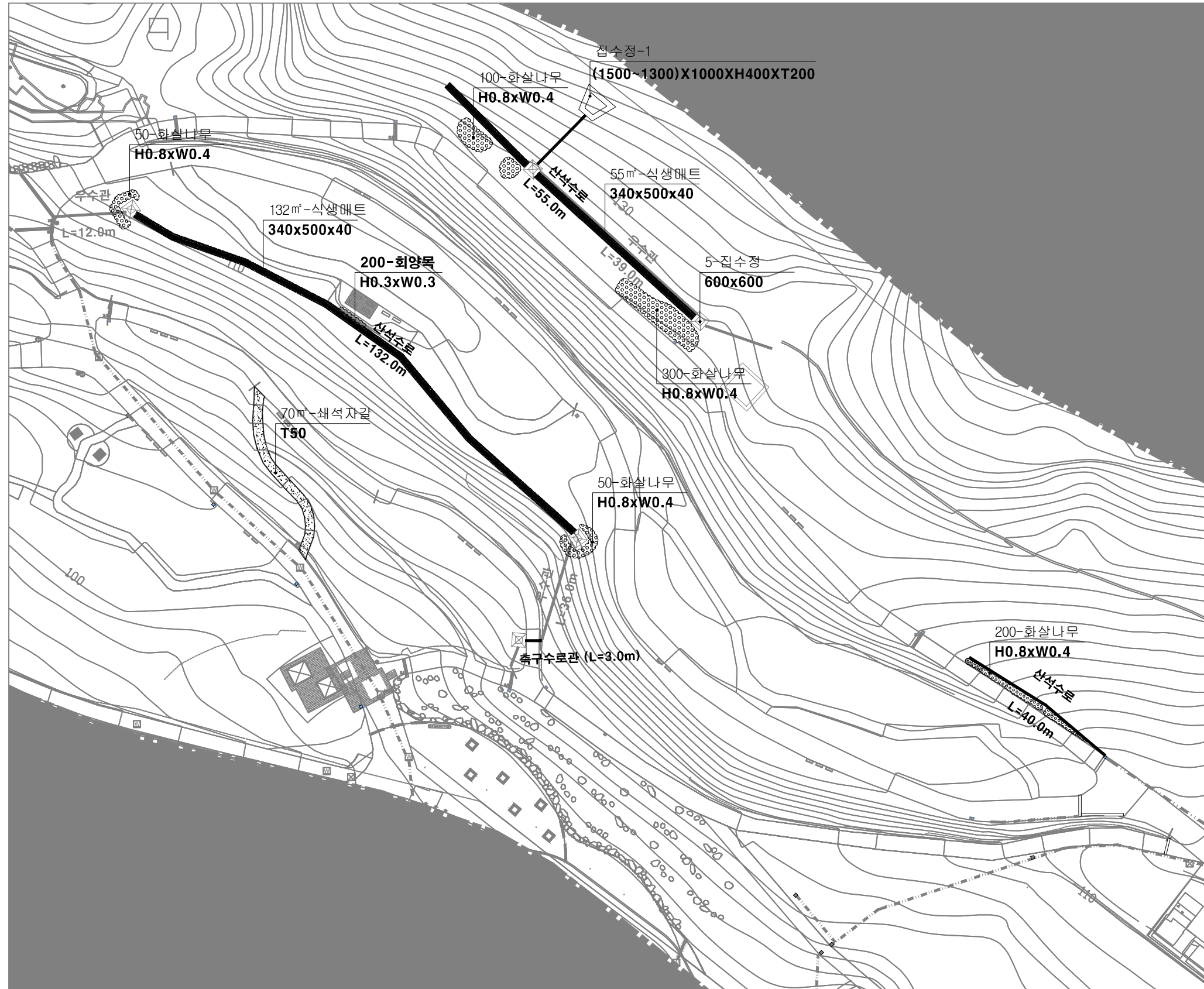


우수관



수량표

구분	구분명	수량	단위	비고
—	산석수로	W800	M	227.0
☒	집수정	600x600x600	EA	5.0
☒	집수정-1	(1500-1300)×1000×H400×T200	EA	1.0
—	우수관	D=300mm	M	87.0
—	축구수로관	W300	M	3.0
●	화살나무	H0.8xW0.4	주	700.0
●	회양목	H0.3xW0.3	주	200.0
■	식생매트	340x500x40, 5매/m ²	m ²	187.0
■	쇄석자갈	T50	m ²	70.0



NOTE

서울특별시 중부푸른도시사업소

NO.	DATE	REVISED	CHECKED	APPROVED
△				
△				
△				

PROJECT

남산 용산공원 수해복구공사 (준공)

TITLE

남산공원 평면도-1

DRAWN BY

DESIGNED BY

CHECKED BY

APPROVED BY

SCALE

DATE

SHEET NO.

DRAWING NO.

C-003



남산공원 평면도-2

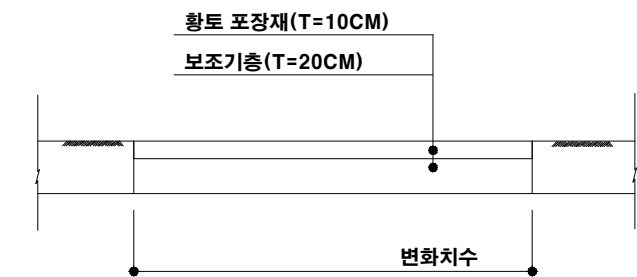
SCALE =1:500



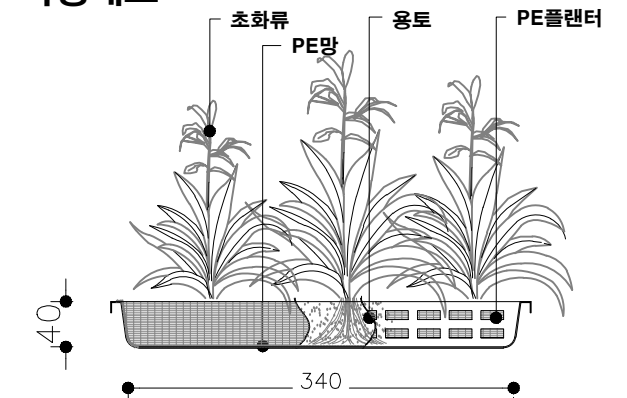
KEYMAP



황토길 포장



식생매트



수량표

구분	재료명	단위	수량
회양목	H0.3xW0.3	주	400
축구수로관	W300	M	2.0
식생매트	340x500x40.5장/㎡	㎡	149.0
황토포장	T=10cm	㎡	66.0

NOTE

서울특별시 중부푸른도시사업소

NO.	DATE	REVISED	CHECKED	APPROVED
△				
△				
△				

PROJECT

남산 용산공원 수해복구공사 (준공)

TITLE

남산공원 평면도-2

DRAWN BY

DESIGNED BY

CHECKED BY

APPROVED BY

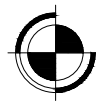
SCALE

DATE

SHEET NO.

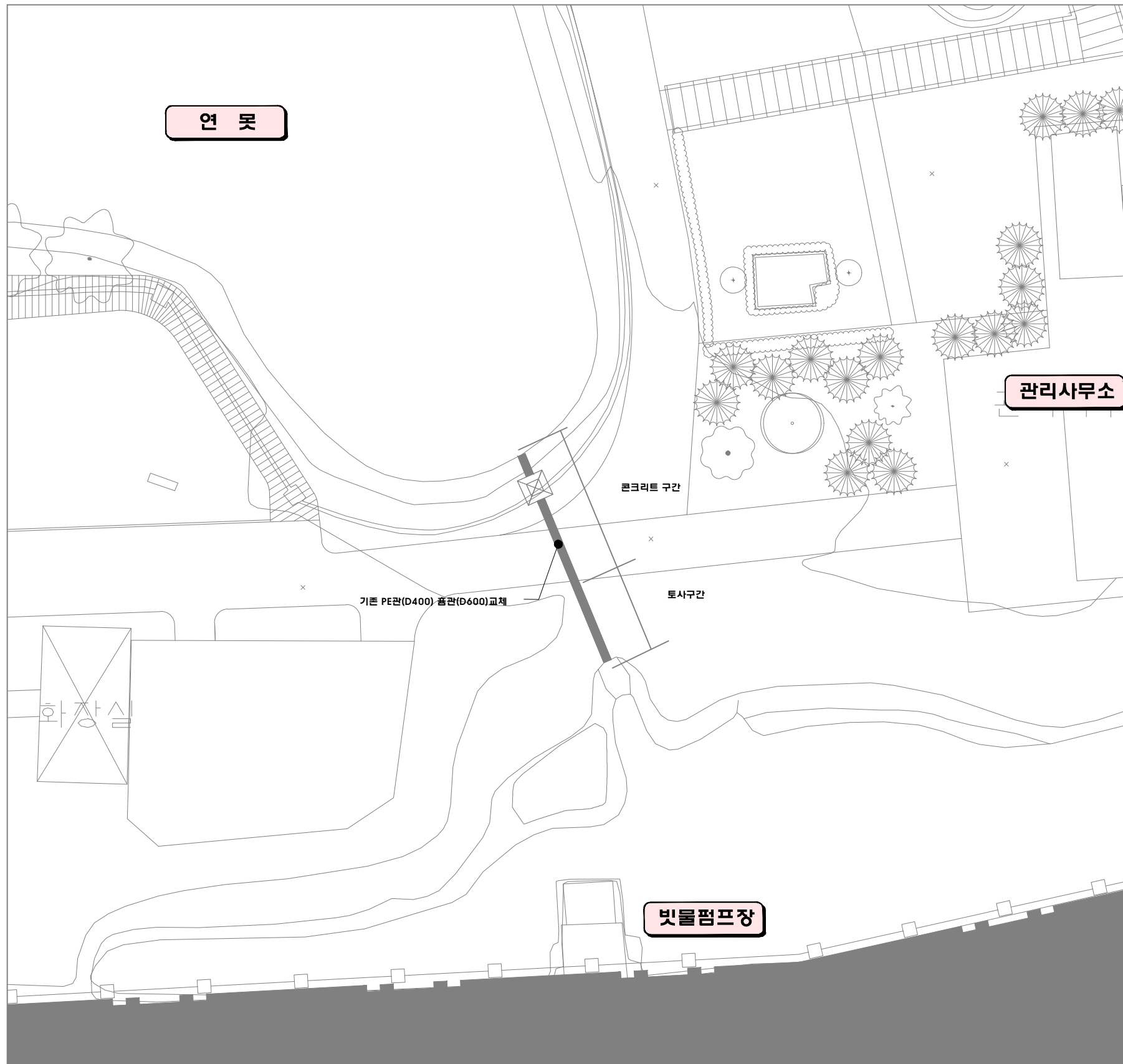
DRAWING NO.

C-004

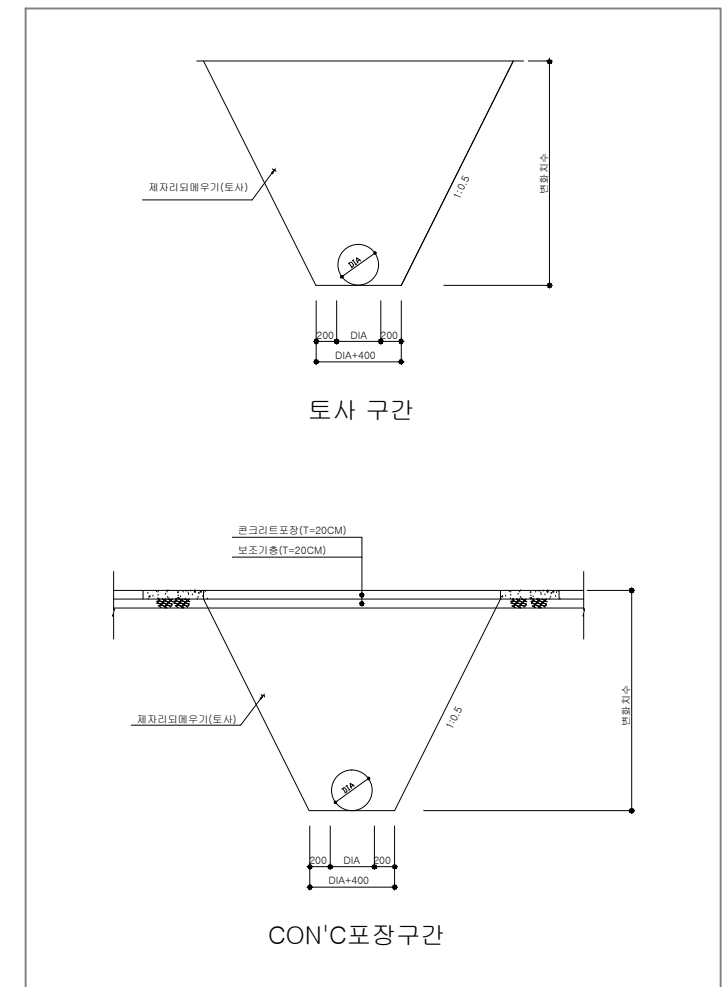


용산공원 배수시설 평면도

SCALE = 1:200



단면도



□ 우수수량표				
<table border="1"> <tr> <td>구간</td> <td>D=600mm</td> <td>M</td> <td>15.0</td> </tr> </table>	구간	D=600mm	M	15.0
구간	D=600mm	M	15.0	

NO.	DATE	REVISED	CHECKED	APPROVED
△				
△				
△				

서울특별시 중부푸른도시사업소

PROJECT	남산 용산공원 수해복구공사 (준공)
---------	---------------------

TITLE
용산공원 배수시설 평면도

DRAWN BY	SCALE
DESIGNED BY	DATE
CHECKED BY	SHEET NO.
APPROVED BY	DRAWING NO.

C-005