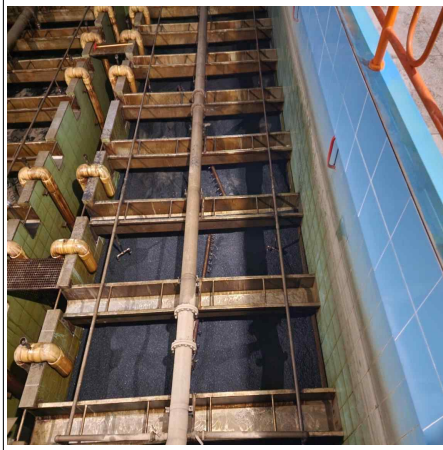


여과지 여재 준설, 세척 및 포설 공사 사진

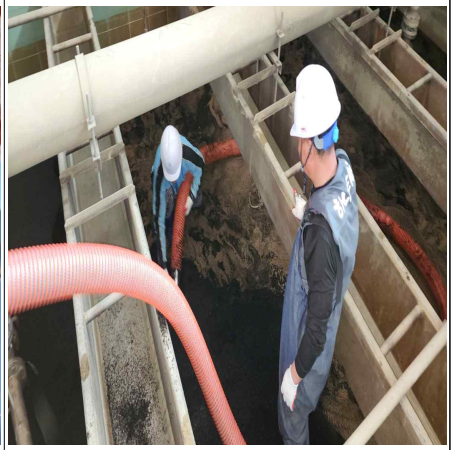
□ 제1정수장 여과지 1지('23.10.27.~10.31.)



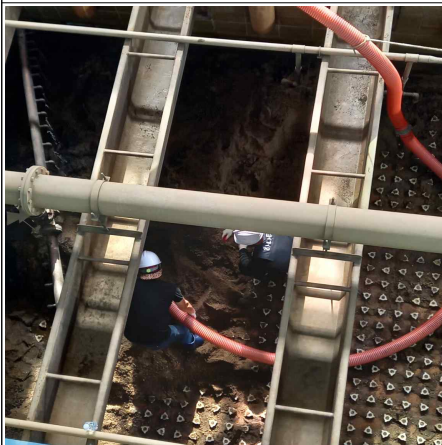
작업전 안전 교육



준설(전)



안트라사이트 준설



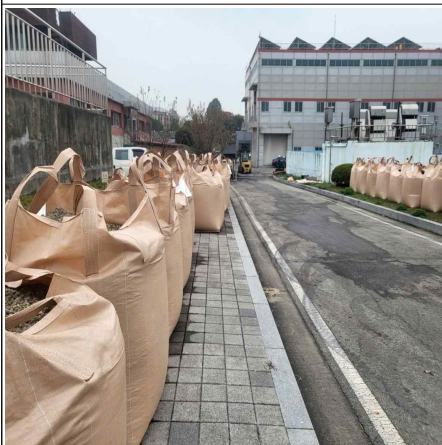
모래 및 자갈 준설



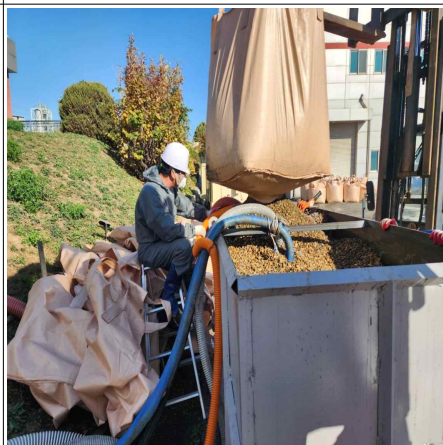
준설완료



여재 세척 및 선별



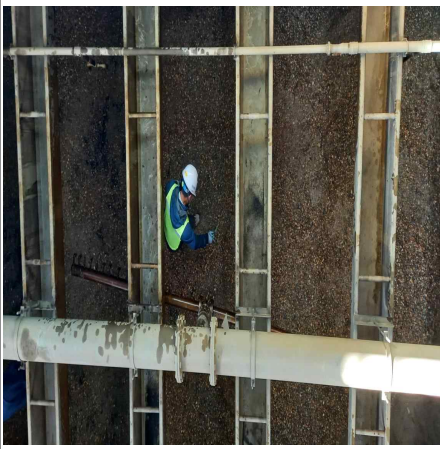
톤백담기 후 야적



자갈 수조 투입(자갈)



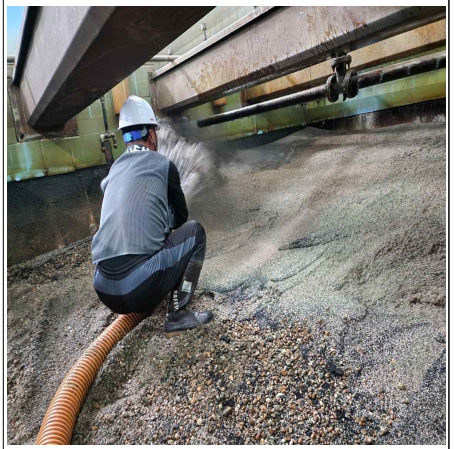
자갈 포설(여과지)



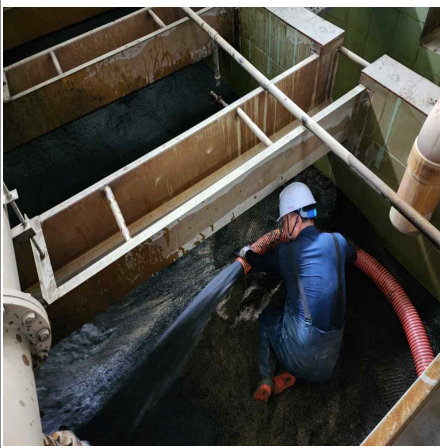
자갈 포설 후 사층조사



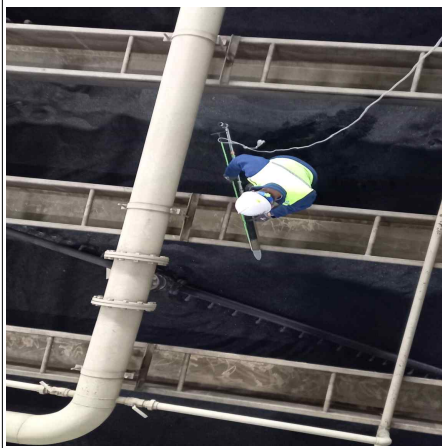
모래 수조 투입



모래 포설 (여과지)



안트라사이트 포설 (여과지)



포설 완료 후 사층조사



역세척 실시