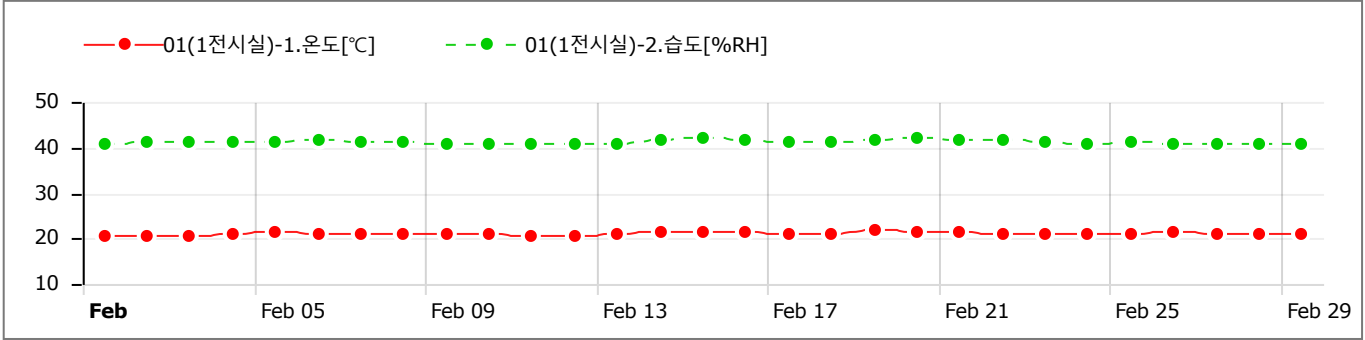


# Monthly Report

Timezone : GMT+09:00 , 2024-02-01 00:00:00~2024-02-29 23:59:59

Report Subject	01(1전시실)		
Report Author	정세리	SUPERVISOR	보존과학실
Channel 1 Info	01(1전시실)-1.온도 [unit : °C]	Channel 2 Info	01(1전시실)-2.습도 [unit : %RH]
Channel 3 Info		Channel 4 Info	

## GRAPHS



## Data Table (Avg) [ ↓ Min / ↑ Max ]

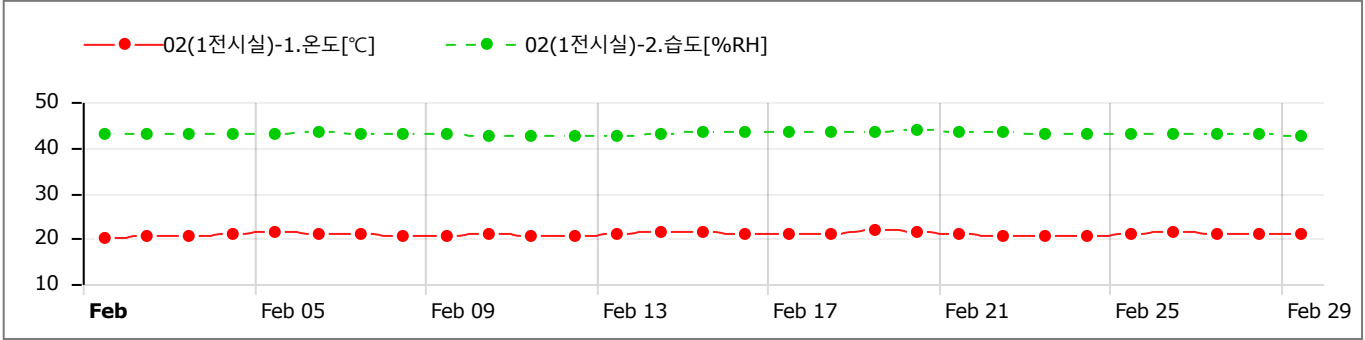
Sun	Mon	Tue	Wed	Thu	Fri	Sat
28	29	30	31	1 CH1) 20.40 [↓] CH2) 40.94	2 CH1) 20.62 CH2) 41.02	3 CH1) 20.72 CH2) 41.05
4 CH1) 20.87 CH2) 41.31	5 CH1) 21.26 CH2) 41.36	6 CH1) 20.89 CH2) 41.65	7 CH1) 20.84 CH2) 41.29	8 CH1) 20.82 CH2) 41.11	9 CH1) 20.77 CH2) 40.72	10 CH1) 20.87 CH2) 40.83
11 CH1) 20.70 CH2) 40.77	12 CH1) 20.73 CH2) 40.55 [↓]	13 CH1) 21.02 CH2) 40.76	14 CH1) 21.36 CH2) 41.56	15 CH1) 21.50 CH2) 42.03	16 CH1) 21.33 CH2) 41.45	17 CH1) 21.19 CH2) 41.25
18 CH1) 21.17 CH2) 41.30	19 CH1) 21.78 [↑] CH2) 41.58	20 CH1) 21.61 CH2) 42.19 [↑]	21 CH1) 21.34 CH2) 41.79	22 CH1) 20.92 CH2) 41.45	23 CH1) 20.87 CH2) 41.09	24 CH1) 20.89 CH2) 40.95
25 CH1) 20.96 CH2) 41.14	26 CH1) 21.22 CH2) 40.91	27 CH1) 21.07 CH2) 40.91	28 CH1) 21.11 CH2) 40.72	29 CH1) 20.97 CH2) 40.89	1	2

# Monthly Report

Timezone : GMT+09:00 , 2024-02-01 00:00:00~2024-02-29 23:59:59

Report Subject	02(1전시실)		
Report Author	정세리	SUPERVISOR	보존과학실
Channel 1 Info	02(1전시실)-1.온도 [unit : °C]	Channel 2 Info	02(1전시실)-2.습도 [unit : %RH]
Channel 3 Info		Channel 4 Info	

## GRAPHS



## Data Table (Avg) [ ↓ Min / ↑ Max ]

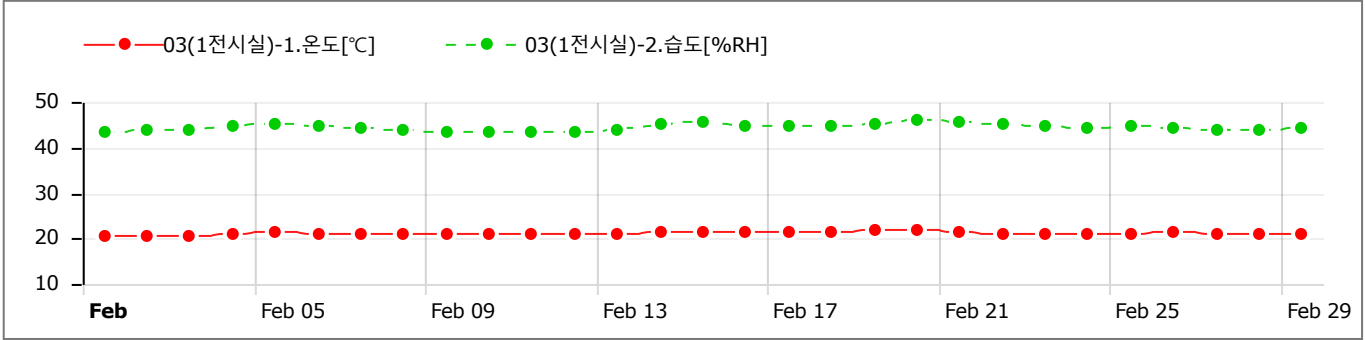
Sun	Mon	Tue	Wed	Thu	Fri	Sat
28	29	30	31	1	2	3
				CH1) 20.28 [↓] CH2) 42.92	CH1) 20.51 CH2) 42.99	CH1) 20.61 CH2) 43.02
4	5	6	7	8	9	10
CH1) 20.80 CH2) 43.11	CH1) 21.35 CH2) 42.96	CH1) 20.86 CH2) 43.32	CH1) 20.77 CH2) 43.13	CH1) 20.75 CH2) 43.01	CH1) 20.70 CH2) 42.85	CH1) 20.82 CH2) 42.71
11	12	13	14	15	16	17
CH1) 20.64 CH2) 42.69	CH1) 20.63 CH2) 42.59 [↓]	CH1) 20.95 CH2) 42.67	CH1) 21.26 CH2) 43.16	CH1) 21.38 CH2) 43.52	CH1) 21.19 CH2) 43.31	CH1) 21.07 CH2) 43.19
18	19	20	21	22	23	24
CH1) 21.05 CH2) 43.21	CH1) 21.70 [↑] CH2) 43.24	CH1) 21.46 CH2) 43.81 [↑]	CH1) 21.15 CH2) 43.57	CH1) 20.73 CH2) 43.41	CH1) 20.69 CH2) 43.15	CH1) 20.76 CH2) 42.93
25	26	27	28	29	1	2
CH1) 20.84 CH2) 43.00	CH1) 21.21 CH2) 42.75	CH1) 20.93 CH2) 42.85	CH1) 20.96 CH2) 42.81	CH1) 20.90 CH2) 42.71		

# Monthly Report

Timezone : GMT+09:00 , 2024-02-01 00:00:00~2024-02-29 23:59:59

Report Subject	03(1전시실)		
Report Author	정세리	SUPERVISOR	보존과학실
Channel 1 Info	03(1전시실)-1.온도 [unit : °C]	Channel 2 Info	03(1전시실)-2.습도 [unit : %RH]
Channel 3 Info		Channel 4 Info	

## GRAPHS



## Data Table (Avg) [ ↓ Min / ↑ Max ]

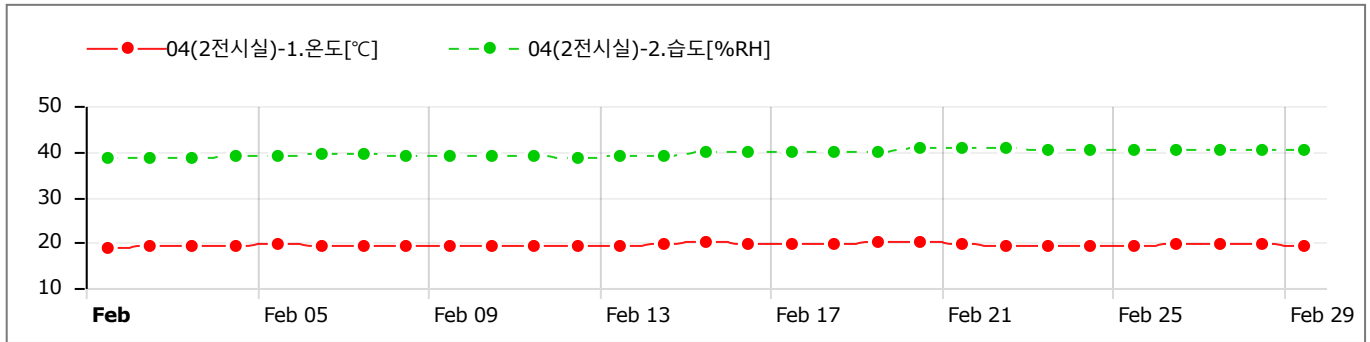
Sun	Mon	Tue	Wed	Thu	Fri	Sat
28	29	30	31	1	2	3
				CH1) 20.40 [ ↓ ] CH2) 43.61	CH1) 20.62 CH2) 43.77	CH1) 20.73 CH2) 44.00
4	5	6	7	8	9	10
CH1) 20.90 CH2) 44.83	CH1) 21.50 CH2) 45.08	CH1) 21.02 CH2) 44.79	CH1) 20.92 CH2) 44.19	CH1) 20.89 CH2) 43.84	CH1) 20.83 CH2) 43.54	CH1) 20.96 CH2) 43.44 [ ↓ ]
11	12	13	14	15	16	17
CH1) 20.78 CH2) 43.52	CH1) 20.78 CH2) 43.48	CH1) 21.06 CH2) 44.00	CH1) 21.36 CH2) 45.27	CH1) 21.51 CH2) 45.74	CH1) 21.37 CH2) 44.85	CH1) 21.23 CH2) 44.59
18	19	20	21	22	23	24
CH1) 21.23 CH2) 44.86	CH1) 21.96 [ ↑ ] CH2) 45.34	CH1) 21.67 CH2) 46.04 [ ↑ ]	CH1) 21.36 CH2) 45.55	CH1) 20.94 CH2) 45.08	CH1) 20.90 CH2) 44.58	CH1) 20.93 CH2) 44.25
25	26	27	28	29	1	2
CH1) 21.02 CH2) 44.63	CH1) 21.47 CH2) 44.25	CH1) 21.13 CH2) 43.80	CH1) 21.12 CH2) 43.82	CH1) 21.04 CH2) 44.43		

# Monthly Report

Timezone : GMT+09:00 , 2024-02-01 00:00:00~2024-02-29 23:59:59

Report Subject	04(2전시실)		
Report Author	정세리	SUPERVISOR	보존과학실
Channel 1 Info	04(2전시실)-1.온도 [unit : °C]	Channel 2 Info	04(2전시실)-2.습도 [unit : %RH]
Channel 3 Info		Channel 4 Info	

## GRAPHS



## Data Table (Avg) [ ↓ Min / ↑ Max ]

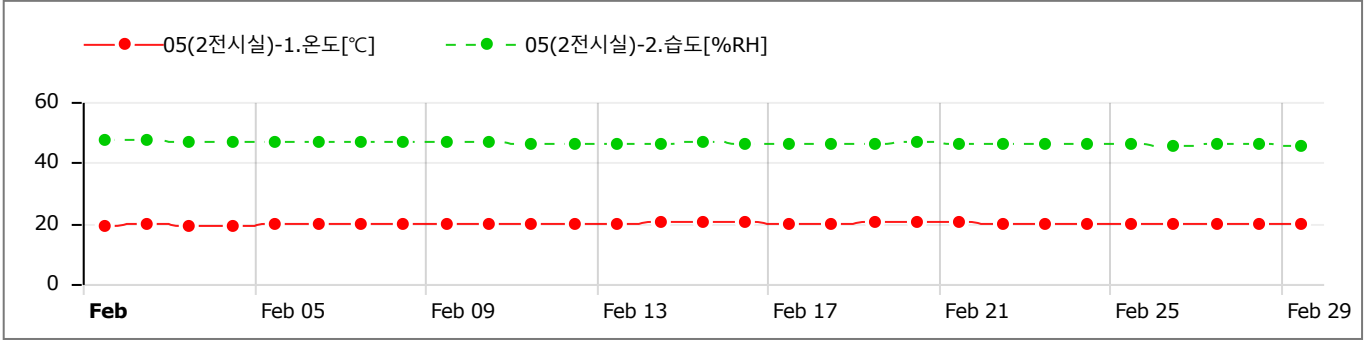
Sun	Mon	Tue	Wed	Thu	Fri	Sat
28	29	30	31	1	2	3
				CH1) 18.78 [↓] CH2) 38.54 [↓]	CH1) 19.12 CH2) 38.70	CH1) 19.10 CH2) 38.79
4	5	6	7	8	9	10
CH1) 19.18 CH2) 38.93	CH1) 19.51 CH2) 39.10	CH1) 19.28 CH2) 39.34	CH1) 19.16 CH2) 39.29	CH1) 19.17 CH2) 39.18	CH1) 19.14 CH2) 39.05	CH1) 19.19 CH2) 38.92
11	12	13	14	15	16	17
CH1) 19.09 CH2) 38.80	CH1) 19.11 CH2) 38.75	CH1) 19.38 CH2) 38.81	CH1) 19.82 CH2) 39.18	CH1) 20.01 CH2) 39.76	CH1) 19.89 CH2) 39.97	CH1) 19.74 CH2) 39.96
18	19	20	21	22	23	24
CH1) 19.73 CH2) 39.98	CH1) 20.02 CH2) 40.00	CH1) 20.10 [↑] CH2) 40.63	CH1) 19.80 CH2) 40.78 [↑]	CH1) 19.44 CH2) 40.73	CH1) 19.23 CH2) 40.50	CH1) 19.23 CH2) 40.36
25	26	27	28	29	1	2
CH1) 19.31 CH2) 40.31	CH1) 19.49 CH2) 40.18	CH1) 19.50 CH2) 40.34	CH1) 19.58 CH2) 40.28	CH1) 19.42 CH2) 40.30		

# Monthly Report

Timezone : GMT+09:00 , 2024-02-01 00:00:00~2024-02-29 23:59:59

Report Subject	05(2전시실)		
Report Author	정세리	SUPERVISOR	보존과학실
Channel 1 Info	05(2전시실)-1.온도 [unit : °C]	Channel 2 Info	05(2전시실)-2.습도 [unit : %RH]
Channel 3 Info		Channel 4 Info	

## GRAPHS



## Data Table (Avg) [ ↓ Min / ↑ Max ]

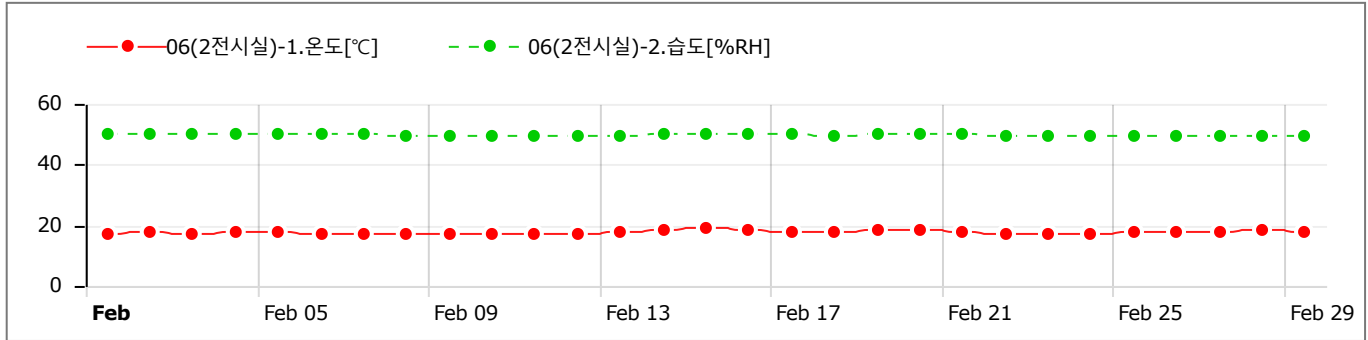
Sun	Mon	Tue	Wed	Thu	Fri	Sat
28	29	30	31	1	2	3
				CH1) 18.87 [↓] CH2) 47.29 [↑]	CH1) 19.55 CH2) 47.18	CH1) 19.27 CH2) 47.11
4	5	6	7	8	9	10
CH1) 19.43 CH2) 46.88	CH1) 19.71 CH2) 46.64	CH1) 19.46 CH2) 46.95	CH1) 19.50 CH2) 46.91	CH1) 19.69 CH2) 46.75	CH1) 19.58 CH2) 46.61	CH1) 19.54 CH2) 46.50
11	12	13	14	15	16	17
CH1) 19.46 CH2) 46.38	CH1) 19.53 CH2) 46.35	CH1) 19.90 CH2) 46.36	CH1) 20.39 CH2) 46.47	CH1) 20.41 CH2) 46.53	CH1) 20.29 CH2) 46.43	CH1) 20.02 CH2) 46.33
18	19	20	21	22	23	24
CH1) 19.94 CH2) 46.26	CH1) 20.24 CH2) 46.19	CH1) 20.64 [↑] CH2) 46.54	CH1) 20.24 CH2) 46.44	CH1) 19.94 CH2) 46.39	CH1) 19.80 CH2) 46.20	CH1) 19.70 CH2) 46.18
25	26	27	28	29	1	2
CH1) 19.80 CH2) 46.10	CH1) 20.06 CH2) 45.75	CH1) 19.93 CH2) 45.95	CH1) 20.02 CH2) 45.88	CH1) 19.55 CH2) 45.72 [↓]		

# Monthly Report

Timezone : GMT+09:00 , 2024-02-01 00:00:00~2024-02-29 23:59:59

Report Subject	06(2전시실)		
Report Author	정세리	SUPERVISOR	보존과학실
Channel 1 Info	06(2전시실)-1.온도 [unit : °C]	Channel 2 Info	06(2전시실)-2.습도 [unit : %RH]
Channel 3 Info		Channel 4 Info	

## GRAPHS



## Data Table (Avg) [ ↓ Min / ↑ Max ]

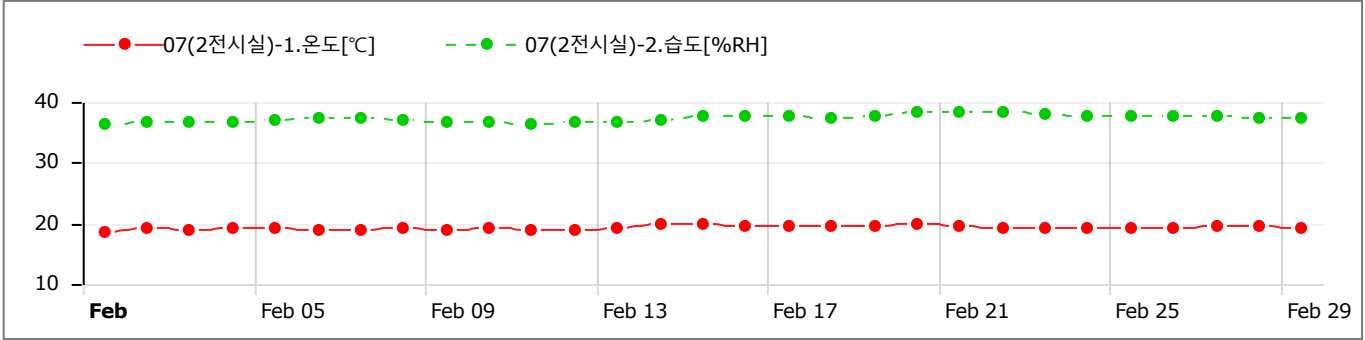
Sun	Mon	Tue	Wed	Thu	Fri	Sat
28	29	30	31	1	2	3
				CH1) 17.19 CH2) 49.92	CH1) 17.62 CH2) 50.03	CH1) 17.32 CH2) 49.92
4	5	6	7	8	9	10
CH1) 17.53 CH2) 49.92	CH1) 18.00 <b>CH2) 50.08 [↑]</b>	CH1) 17.38 CH2) 49.96	CH1) 17.16 CH2) 49.85	CH1) 17.14 CH2) 49.77	CH1) 17.32 CH2) 49.69	CH1) 17.38 CH2) 49.65
11	12	13	14	15	16	17
CH1) 17.19 CH2) 49.54	CH1) 17.34 CH2) 49.55	CH1) 17.92 CH2) 49.67	CH1) 18.70 CH2) 49.88	<b>CH1) 19.03 [↑]</b> CH2) 50.04	CH1) 18.31 CH2) 49.97	CH1) 18.00 CH2) 49.81
18	19	20	21	22	23	24
CH1) 18.03 CH2) 49.76	CH1) 18.20 CH2) 49.87	CH1) 18.62 CH2) 50.04	CH1) 17.97 CH2) 49.90	CH1) 17.29 CH2) 49.72	<b>CH1) 16.93 [↓]</b> CH2) 49.55	CH1) 17.20 <b>CH2) 49.52 [↓]</b>
25	26	27	28	29	1	2
CH1) 17.51 CH2) 49.57	CH1) 17.57 CH2) 49.62	CH1) 18.00 CH2) 49.65	CH1) 18.17 CH2) 49.64	CH1) 18.01 CH2) 49.54		

# Monthly Report

Timezone : GMT+09:00 , 2024-02-01 00:00:00~2024-02-29 23:59:59

Report Subject	07(2전시실)		
Report Author	정세리	SUPERVISOR	보존과학실
Channel 1 Info	07(2전시실)-1.온도 [unit : °C]	Channel 2 Info	07(2전시실)-2.습도 [unit : %RH]
Channel 3 Info		Channel 4 Info	

## GRAPHS



## Data Table (Avg) [ ↓ Min / ↑ Max ]

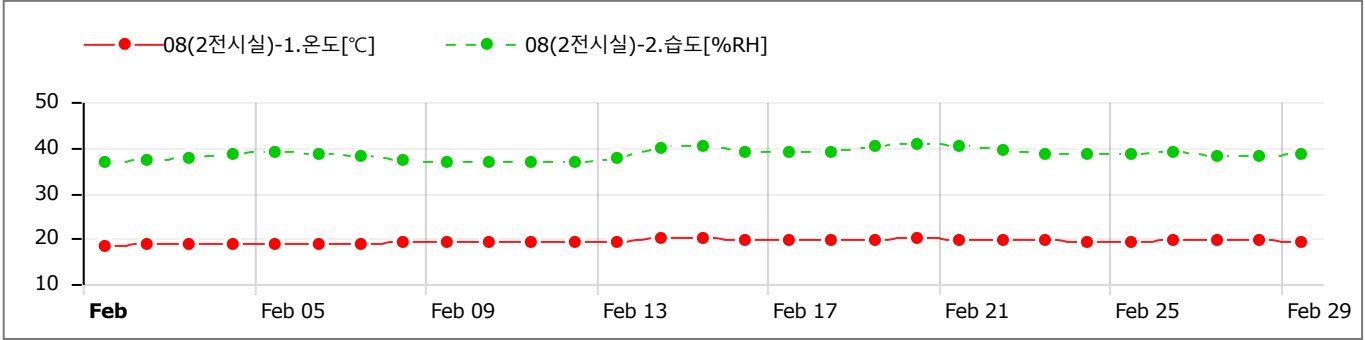
Sun	Mon	Tue	Wed	Thu	Fri	Sat
28	29	30	31	1 CH1) 18.66 [↓] CH2) 36.51	2 CH1) 19.15 CH2) 36.83	3 CH1) 19.05 CH2) 36.68
4 CH1) 19.07 CH2) 36.83	5 CH1) 19.13 CH2) 37.00	6 CH1) 18.99 CH2) 37.33	7 CH1) 19.03 CH2) 37.21	8 CH1) 19.07 CH2) 37.16	9 CH1) 19.06 CH2) 36.82	10 CH1) 19.10 CH2) 36.69
11 CH1) 18.97 CH2) 36.48 [↓]	12 CH1) 18.99 CH2) 36.55	13 CH1) 19.36 CH2) 36.62	14 CH1) 19.91 CH2) 37.13	15 CH1) 20.04 [↑] CH2) 37.60	16 CH1) 19.67 CH2) 37.77	17 CH1) 19.58 CH2) 37.54
18 CH1) 19.59 CH2) 37.44	19 CH1) 19.60 CH2) 37.69	20 CH1) 19.91 CH2) 38.27	21 CH1) 19.64 CH2) 38.34 [↑]	22 CH1) 19.31 CH2) 38.23	23 CH1) 19.15 CH2) 38.05	24 CH1) 19.22 CH2) 37.78
25 CH1) 19.30 CH2) 37.69	26 CH1) 19.30 CH2) 37.74	27 CH1) 19.44 CH2) 37.67	28 CH1) 19.61 CH2) 37.46	29 CH1) 19.35 CH2) 37.32	1	2

# Monthly Report

Timezone : GMT+09:00 , 2024-02-01 00:00:00~2024-02-29 23:59:59

Report Subject	08(2전시실)		
Report Author	정세리	SUPERVISOR	보존과학실
Channel 1 Info	08(2전시실)-1.온도 [unit : °C]	Channel 2 Info	08(2전시실)-2.습도 [unit : %RH]
Channel 3 Info		Channel 4 Info	

## GRAPHS



## Data Table (Avg) [ ↓ Min / ↑ Max ]

Sun	Mon	Tue	Wed	Thu	Fri	Sat
28	29	30	31	1 CH1) 18.28 [↓] CH2) 36.99	2 CH1) 18.86 CH2) 37.08	3 CH1) 18.72 CH2) 37.76
4 CH1) 18.96 CH2) 38.57	5 CH1) 19.01 CH2) 38.89	6 CH1) 18.95 CH2) 38.45	7 CH1) 19.00 CH2) 38.03	8 CH1) 19.26 CH2) 37.32	9 CH1) 19.19 CH2) 37.03	10 CH1) 19.17 CH2) 36.85 [↓]
11 CH1) 19.08 CH2) 36.95	12 CH1) 19.11 CH2) 36.98	13 CH1) 19.44 CH2) 37.82	14 CH1) 19.92 CH2) 39.69	15 CH1) 20.00 CH2) 40.23	16 CH1) 19.87 CH2) 39.15	17 CH1) 19.64 CH2) 38.80
18 CH1) 19.57 CH2) 39.07	19 CH1) 19.65 CH2) 40.32	20 CH1) 20.15 [↑] CH2) 40.68 [↑]	21 CH1) 19.85 CH2) 40.13	22 CH1) 19.59 CH2) 39.43	23 CH1) 19.48 CH2) 38.69	24 CH1) 19.36 CH2) 38.36
25 CH1) 19.43 CH2) 38.77	26 CH1) 19.46 CH2) 39.07	27 CH1) 19.50 CH2) 37.94	28 CH1) 19.62 CH2) 37.97	29 CH1) 19.24 CH2) 38.77	1	2

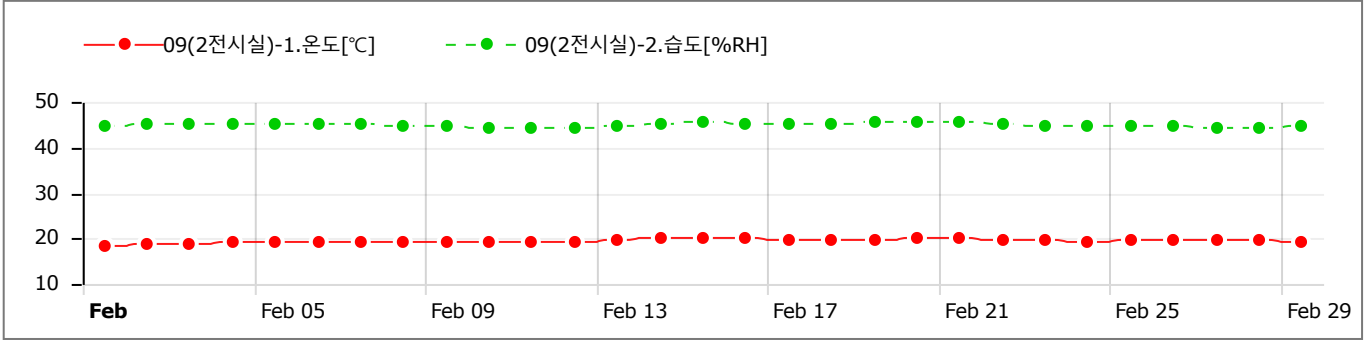


# Monthly Report

Timezone : GMT+09:00 , 2024-02-01 00:00:00~2024-02-29 23:59:59

Report Subject	09(2전시실)		
Report Author	정세리	SUPERVISOR	보존과학실
Channel 1 Info	09(2전시실)-1.온도 [unit : °C]	Channel 2 Info	09(2전시실)-2.습도 [unit : %RH]
Channel 3 Info		Channel 4 Info	

## GRAPHS



## Data Table (Avg) [ ↓ Min / ↑ Max ]

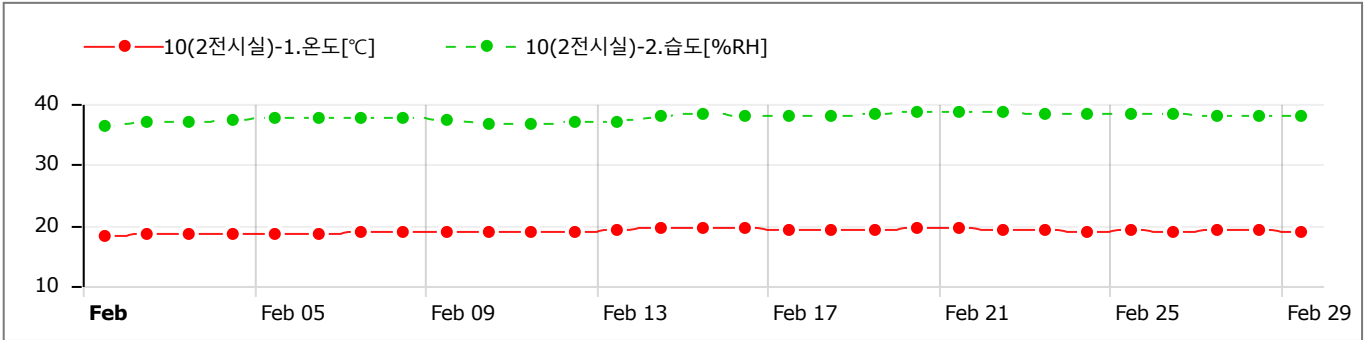
Sun	Mon	Tue	Wed	Thu	Fri	Sat
28	29	30	31	1 CH1) 18.44 [↓] CH2) 44.84	2 CH1) 18.97 CH2) 45.11	3 CH1) 18.83 CH2) 45.25
4 CH1) 19.04 CH2) 45.23	5 CH1) 19.10 CH2) 45.36	6 CH1) 19.05 CH2) 45.26	7 CH1) 19.10 CH2) 45.18	8 CH1) 19.34 CH2) 44.73	9 CH1) 19.26 CH2) 44.56	10 CH1) 19.25 CH2) 44.37
11 CH1) 19.15 CH2) 44.33 [↓]	12 CH1) 19.19 CH2) 44.36	13 CH1) 19.50 CH2) 44.58	14 CH1) 19.97 CH2) 45.25	15 CH1) 20.05 CH2) 45.52	16 CH1) 19.94 CH2) 45.12	17 CH1) 19.73 CH2) 44.97
18 CH1) 19.63 CH2) 45.02	19 CH1) 19.70 CH2) 45.40	20 CH1) 20.21 [↑] CH2) 45.65 [↑]	21 CH1) 19.92 CH2) 45.46	22 CH1) 19.65 CH2) 45.22	23 CH1) 19.54 CH2) 44.89	24 CH1) 19.43 CH2) 44.70
25 CH1) 19.50 CH2) 44.77	26 CH1) 19.52 CH2) 44.81	27 CH1) 19.57 CH2) 44.38	28 CH1) 19.68 CH2) 44.37	29 CH1) 19.30 CH2) 44.67	1	2

# Monthly Report

Timezone : GMT+09:00 , 2024-02-01 00:00:00~2024-02-29 23:59:59

Report Subject	10(2전시실)		
Report Author	정세리	SUPERVISOR	보존과학실
Channel 1 Info	10(2전시실)-1.온도 [unit : °C]	Channel 2 Info	10(2전시실)-2.습도 [unit : %RH]
Channel 3 Info		Channel 4 Info	

## GRAPHS



## Data Table (Avg) [ ↓ Min / ↑ Max ]

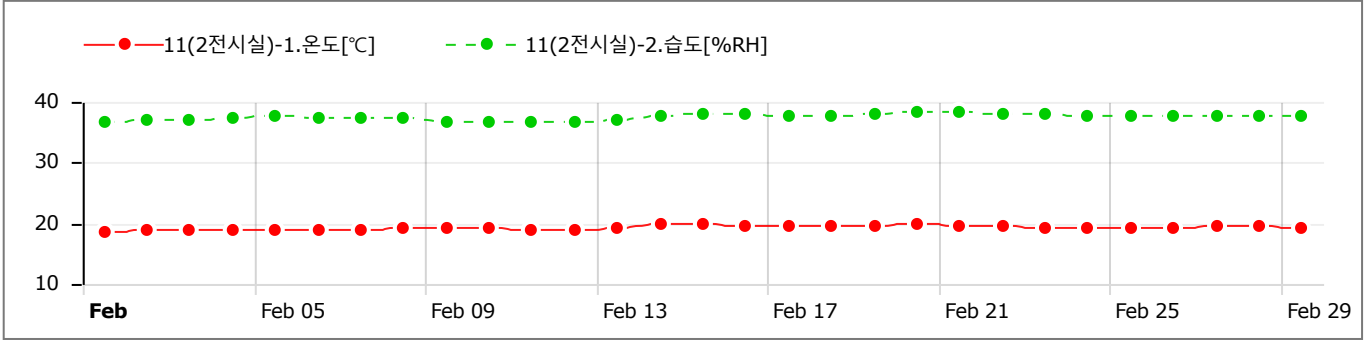
Sun	Mon	Tue	Wed	Thu	Fri	Sat
28	29	30	31	1	2	3
				CH1) 18.19 [↓] CH2) 36.52 [↓]	CH1) 18.72 CH2) 37.02	CH1) 18.60 CH2) 37.05
4	5	6	7	8	9	10
CH1) 18.72 CH2) 37.45	CH1) 18.59 CH2) 37.81	CH1) 18.70 CH2) 37.77	CH1) 18.78 CH2) 37.83	CH1) 18.90 CH2) 37.56	CH1) 18.88 CH2) 37.20	CH1) 18.89 CH2) 36.78
11	12	13	14	15	16	17
CH1) 18.79 CH2) 36.81	CH1) 18.78 CH2) 36.90	CH1) 19.10 CH2) 37.16	CH1) 19.63 CH2) 37.86	CH1) 19.70 CH2) 38.22	CH1) 19.51 CH2) 38.17	CH1) 19.36 CH2) 38.01
18	19	20	21	22	23	24
CH1) 19.31 CH2) 38.08	CH1) 19.20 CH2) 38.22	CH1) 19.72 [↑] CH2) 38.59	CH1) 19.48 CH2) 38.65 [↑]	CH1) 19.20 CH2) 38.58	CH1) 19.11 CH2) 38.40	CH1) 19.02 CH2) 38.21
25	26	27	28	29	1	2
CH1) 19.11 CH2) 38.21	CH1) 18.97 CH2) 38.21	CH1) 19.17 CH2) 38.04	CH1) 19.32 CH2) 38.02	CH1) 18.95 CH2) 37.97		

# Monthly Report

Timezone : GMT+09:00 , 2024-02-01 00:00:00~2024-02-29 23:59:59

Report Subject	11(2전시실)		
Report Author	정세리	SUPERVISOR	보존과학실
Channel 1 Info	11(2전시실)-1.온도 [unit : °C]	Channel 2 Info	11(2전시실)-2.습도 [unit : %RH]
Channel 3 Info		Channel 4 Info	

## GRAPHS



## Data Table (Avg) [ ↓ Min / ↑ Max ]

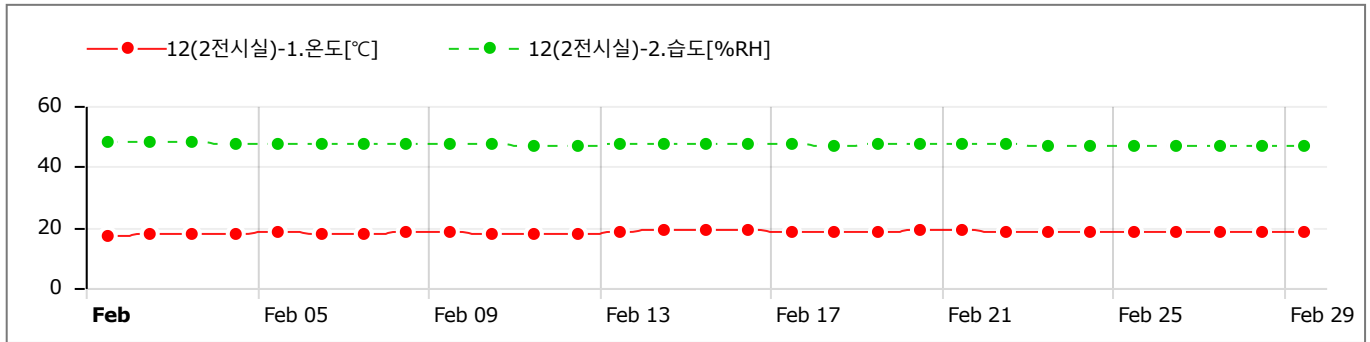
Sun	Mon	Tue	Wed	Thu	Fri	Sat
28	29	30	31	1	2	3
				CH1) 18.41 [↓] CH2) 36.80	CH1) 18.95 CH2) 37.05	CH1) 18.79 CH2) 37.07
4	5	6	7	8	9	10
CH1) 18.93 CH2) 37.29	CH1) 18.80 CH2) 37.57	CH1) 18.90 CH2) 37.52	CH1) 18.97 CH2) 37.47	CH1) 19.14 CH2) 37.21	CH1) 19.10 CH2) 36.86	CH1) 19.11 CH2) 36.61
11	12	13	14	15	16	17
CH1) 19.00 CH2) 36.55 [↓]	CH1) 19.00 CH2) 36.74	CH1) 19.34 CH2) 36.96	CH1) 19.83 CH2) 37.62	CH1) 19.87 CH2) 38.10	CH1) 19.72 CH2) 37.93	CH1) 19.56 CH2) 37.70
18	19	20	21	22	23	24
CH1) 19.48 CH2) 37.72	CH1) 19.40 CH2) 37.98	CH1) 19.92 [↑] CH2) 38.42 [↑]	CH1) 19.67 CH2) 38.36	CH1) 19.40 CH2) 38.18	CH1) 19.32 CH2) 37.95	CH1) 19.23 CH2) 37.72
25	26	27	28	29	1	2
CH1) 19.32 CH2) 37.72	CH1) 19.17 CH2) 37.77	CH1) 19.40 CH2) 37.67	CH1) 19.53 CH2) 37.58	CH1) 19.12 CH2) 37.57		

# Monthly Report

Timezone : GMT+09:00 , 2024-02-01 00:00:00~2024-02-29 23:59:59

Report Subject	12(2전시실)		
Report Author	정세리	SUPERVISOR	보존과학실
Channel 1 Info	12(2전시실)-1.온도 [unit : °C]	Channel 2 Info	12(2전시실)-2.습도 [unit : %RH]
Channel 3 Info		Channel 4 Info	

## GRAPHS



## Data Table (Avg) [ ↓ Min / ↑ Max ]

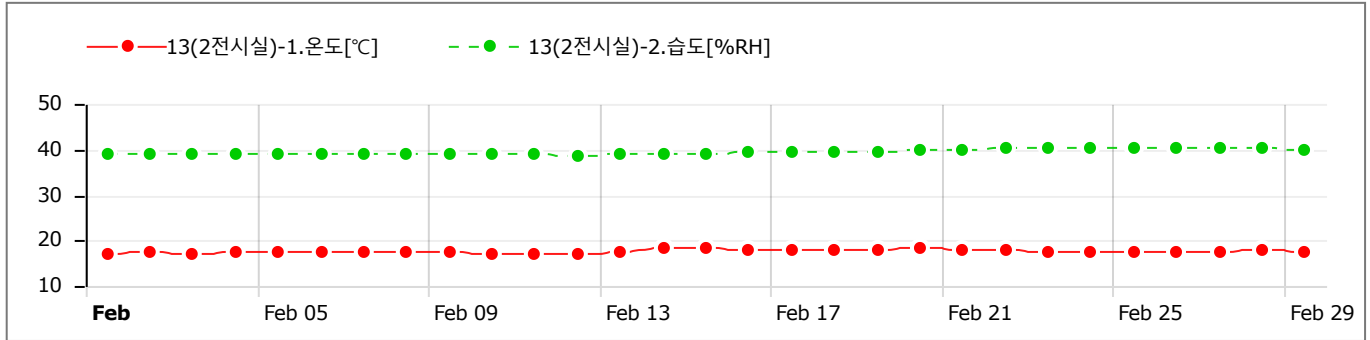
Sun	Mon	Tue	Wed	Thu	Fri	Sat
28	29	30	31	1	2	3
				CH1) 17.27 [↓] CH2) 47.97	CH1) 17.88 CH2) 48.13 [↑]	CH1) 17.74 CH2) 47.89
4	5	6	7	8	9	10
CH1) 18.02 CH2) 47.74	CH1) 18.15 CH2) 47.65	CH1) 18.03 CH2) 47.70	CH1) 18.06 CH2) 47.67	CH1) 18.25 CH2) 47.53	CH1) 18.14 CH2) 47.33	CH1) 18.10 CH2) 47.23
11	12	13	14	15	16	17
CH1) 18.02 CH2) 47.12	CH1) 18.08 CH2) 47.13	CH1) 18.41 CH2) 47.25	CH1) 18.96 CH2) 47.51	CH1) 19.18 CH2) 47.55	CH1) 18.98 CH2) 47.40	CH1) 18.68 CH2) 47.19
18	19	20	21	22	23	24
CH1) 18.59 CH2) 47.12	CH1) 18.77 CH2) 47.18	CH1) 19.30 [↑] CH2) 47.53	CH1) 18.97 CH2) 47.34	CH1) 18.62 CH2) 47.19	CH1) 18.43 CH2) 47.04	CH1) 18.32 CH2) 46.95
25	26	27	28	29	1	2
CH1) 18.42 CH2) 46.94	CH1) 18.50 CH2) 46.80	CH1) 18.54 CH2) 46.84	CH1) 18.70 CH2) 46.86	CH1) 18.37 CH2) 46.60 [↓]		

# Monthly Report

Timezone : GMT+09:00 , 2024-02-01 00:00:00~2024-02-29 23:59:59

Report Subject	13(2전시실)		
Report Author	정세리	SUPERVISOR	보존과학실
Channel 1 Info	13(2전시실)-1.온도 [unit : °C]	Channel 2 Info	13(2전시실)-2.습도 [unit : %RH]
Channel 3 Info		Channel 4 Info	

## GRAPHS



## Data Table (Avg) [ ↓ Min / ↑ Max ]

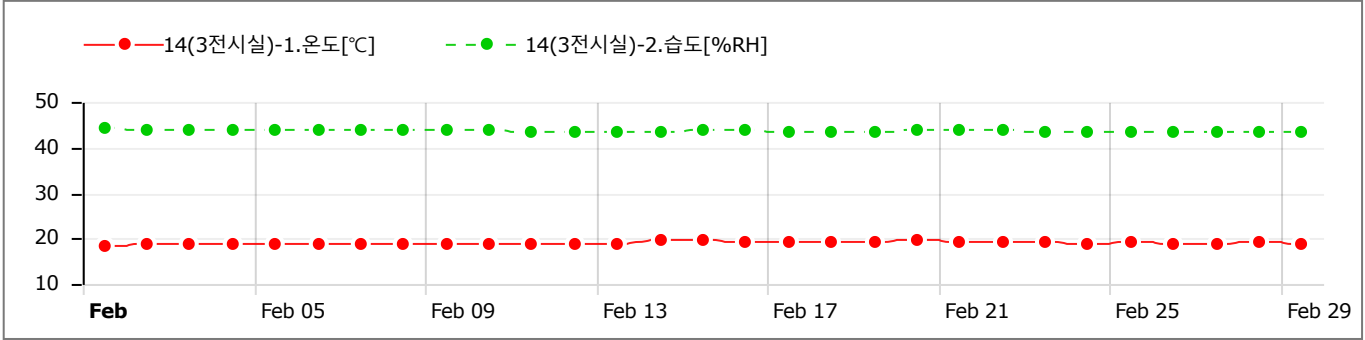
Sun	Mon	Tue	Wed	Thu	Fri	Sat
28	29	30	31	1 CH1) 16.82 [↓] CH2) 38.98	2 CH1) 17.46 CH2) 39.15	3 CH1) 17.20 CH2) 38.91
4 CH1) 17.34 CH2) 38.91	5 CH1) 17.44 CH2) 38.95	6 CH1) 17.43 CH2) 39.00	7 CH1) 17.43 CH2) 39.03	8 CH1) 17.49 CH2) 39.09	9 CH1) 17.27 CH2) 39.02	10 CH1) 17.20 CH2) 38.94
11 CH1) 17.12 CH2) 38.83	12 CH1) 17.21 CH2) 38.79 [↓]	13 CH1) 17.56 CH2) 38.84	14 CH1) 18.16 CH2) 39.03	15 CH1) 18.35 CH2) 39.15	16 CH1) 18.10 CH2) 39.24	17 CH1) 17.76 CH2) 39.28
18 CH1) 17.72 CH2) 39.38	19 CH1) 17.86 CH2) 39.55	20 CH1) 18.48 [↑] CH2) 39.97	21 CH1) 18.13 CH2) 40.06	22 CH1) 17.80 CH2) 40.12	23 CH1) 17.66 CH2) 40.18	24 CH1) 17.48 CH2) 40.16
25 CH1) 17.59 CH2) 40.22	26 CH1) 17.60 CH2) 40.24	27 CH1) 17.62 CH2) 40.25 [↑]	28 CH1) 17.81 CH2) 40.22	29 CH1) 17.47 CH2) 39.99	1	2

# Monthly Report

Timezone : GMT+09:00 , 2024-02-01 00:00:00~2024-02-29 23:59:59

Report Subject	14(3전시실)		
Report Author	정세리	SUPERVISOR	보존과학실
Channel 1 Info	14(3전시실)-1.온도 [unit : °C]	Channel 2 Info	14(3전시실)-2.습도 [unit : %RH]
Channel 3 Info		Channel 4 Info	

## GRAPHS



## Data Table (Avg) [ ↓ Min / ↑ Max ]

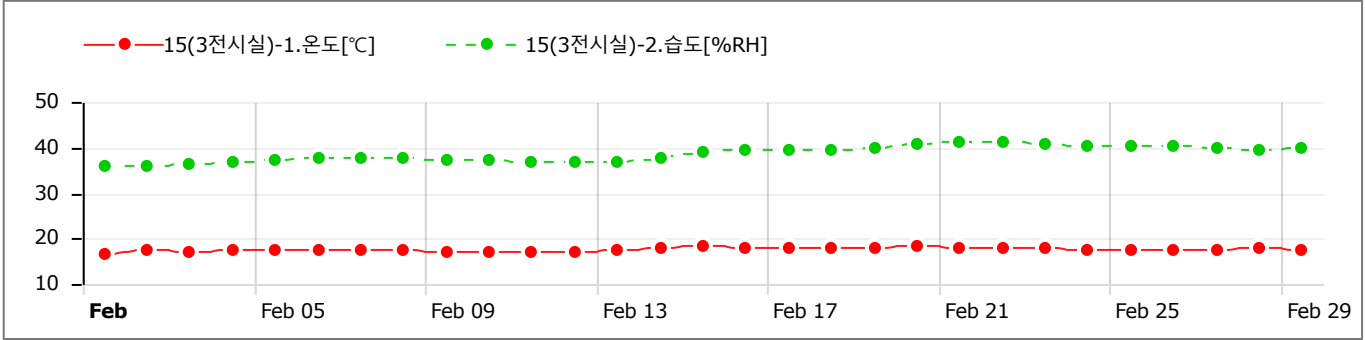
Sun	Mon	Tue	Wed	Thu	Fri	Sat
28	29	30	31	1 CH1) 18.22 [↓] CH2) 44.12 [↑]	2 CH1) 18.89 CH2) 44.06	3 CH1) 18.62 CH2) 44.06
4 CH1) 18.70 CH2) 44.01	5 CH1) 18.71 CH2) 43.94	6 CH1) 18.75 CH2) 43.96	7 CH1) 18.79 CH2) 43.95	8 CH1) 18.88 CH2) 43.88	9 CH1) 18.70 CH2) 43.76	10 CH1) 18.66 CH2) 43.66
11 CH1) 18.59 CH2) 43.56	12 CH1) 18.62 CH2) 43.52	13 CH1) 18.92 CH2) 43.52	14 CH1) 19.49 CH2) 43.59	15 CH1) 19.52 CH2) 43.70	16 CH1) 19.37 CH2) 43.67	17 CH1) 19.10 CH2) 43.60
18 CH1) 19.09 CH2) 43.54	19 CH1) 19.15 CH2) 43.55	20 CH1) 19.75 [↑] CH2) 43.71	21 CH1) 19.42 CH2) 43.71	22 CH1) 19.21 CH2) 43.65	23 CH1) 19.15 CH2) 43.55	24 CH1) 18.94 CH2) 43.48
25 CH1) 19.03 CH2) 43.42	26 CH1) 18.92 CH2) 43.31	27 CH1) 19.00 CH2) 43.28	28 CH1) 19.16 CH2) 43.27	29 CH1) 18.65 CH2) 43.24 [↓]	1	2

# Monthly Report

Timezone : GMT+09:00 , 2024-02-01 00:00:00~2024-02-29 23:59:59

Report Subject	15(3전시실)		
Report Author	정세리	SUPERVISOR	보존과학실
Channel 1 Info	15(3전시실)-1.온도 [unit : °C]	Channel 2 Info	15(3전시실)-2.습도 [unit : %RH]
Channel 3 Info		Channel 4 Info	

## GRAPHS



## Data Table (Avg) [ ↓ Min / ↑ Max ]

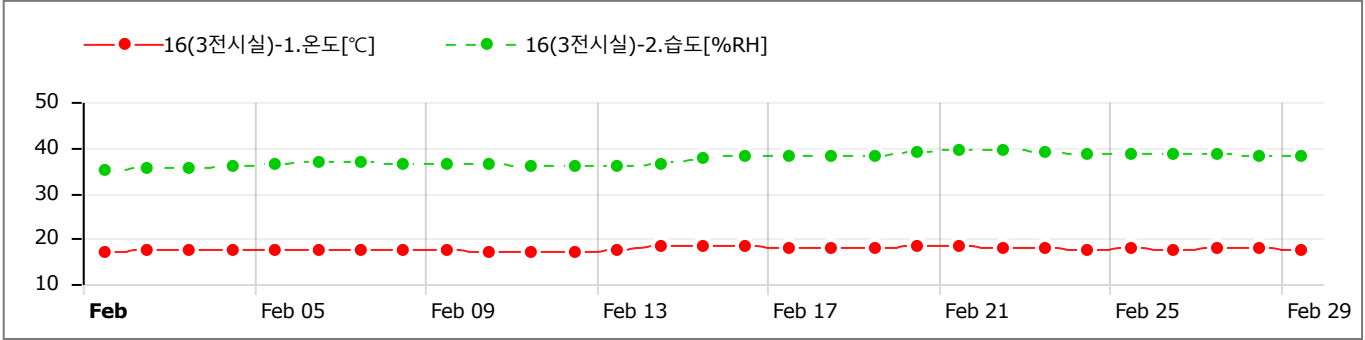
Sun	Mon	Tue	Wed	Thu	Fri	Sat
28	29	30	31	1	2	3
				CH1) 16.81 [↓] CH2) 35.89 [↓]	CH1) 17.50 CH2) 36.10	CH1) 17.21 CH2) 36.37
4	5	6	7	8	9	10
CH1) 17.34 CH2) 36.86	CH1) 17.43 CH2) 37.42	CH1) 17.43 CH2) 37.71	CH1) 17.46 CH2) 37.74	CH1) 17.48 CH2) 37.55	CH1) 17.21 CH2) 37.30	CH1) 17.12 CH2) 37.07
11	12	13	14	15	16	17
CH1) 17.03 CH2) 36.95	CH1) 17.13 CH2) 36.98	CH1) 17.47 CH2) 36.96	CH1) 18.08 CH2) 37.72	CH1) 18.22 CH2) 39.07	CH1) 18.03 CH2) 39.62	CH1) 17.71 CH2) 39.40
18	19	20	21	22	23	24
CH1) 17.70 CH2) 39.37	CH1) 17.86 CH2) 39.94	CH1) 18.42 [↑] CH2) 40.91	CH1) 18.12 CH2) 41.26 [↑]	CH1) 17.82 CH2) 41.17	CH1) 17.76 CH2) 40.77	CH1) 17.51 CH2) 40.30
25	26	27	28	29	1	2
CH1) 17.61 CH2) 40.11	CH1) 17.55 CH2) 40.20	CH1) 17.63 CH2) 39.93	CH1) 17.78 CH2) 39.56	CH1) 17.43 CH2) 39.71		

# Monthly Report

Timezone : GMT+09:00 , 2024-02-01 00:00:00~2024-02-29 23:59:59

Report Subject	16(3전시실)		
Report Author	정세리	SUPERVISOR	보존과학실
Channel 1 Info	16(3전시실)-1.온도 [unit : °C]	Channel 2 Info	16(3전시실)-2.습도 [unit : %RH]
Channel 3 Info		Channel 4 Info	

## GRAPHS



## Data Table (Avg) [ ↓ Min / ↑ Max ]

Sun	Mon	Tue	Wed	Thu	Fri	Sat
28	29	30	31	1 CH1) 16.89 [↓] CH2) 35.21 [↓]	2 CH1) 17.56 CH2) 35.40	3 CH1) 17.34 CH2) 35.53
4 CH1) 17.48 CH2) 35.90	5 CH1) 17.57 CH2) 36.35	6 CH1) 17.56 CH2) 36.67	7 CH1) 17.55 CH2) 36.73	8 CH1) 17.56 CH2) 36.59	9 CH1) 17.30 CH2) 36.37	10 CH1) 17.23 CH2) 36.16
11 CH1) 17.18 CH2) 36.06	12 CH1) 17.24 CH2) 36.06	13 CH1) 17.56 CH2) 36.07	14 CH1) 18.19 CH2) 36.54	15 CH1) 18.39 CH2) 37.53	16 CH1) 18.18 CH2) 38.17	17 CH1) 17.84 CH2) 38.05
18 CH1) 17.84 CH2) 37.98	19 CH1) 18.00 CH2) 38.28	20 CH1) 18.56 [↑] CH2) 39.14	21 CH1) 18.28 CH2) 39.48 [↑]	22 CH1) 17.98 CH2) 39.46	23 CH1) 17.88 CH2) 39.13	24 CH1) 17.64 CH2) 38.75
25 CH1) 17.75 CH2) 38.57	26 CH1) 17.65 CH2) 38.64	27 CH1) 17.73 CH2) 38.45	28 CH1) 17.90 CH2) 38.12	29 CH1) 17.56 CH2) 38.03	1	2

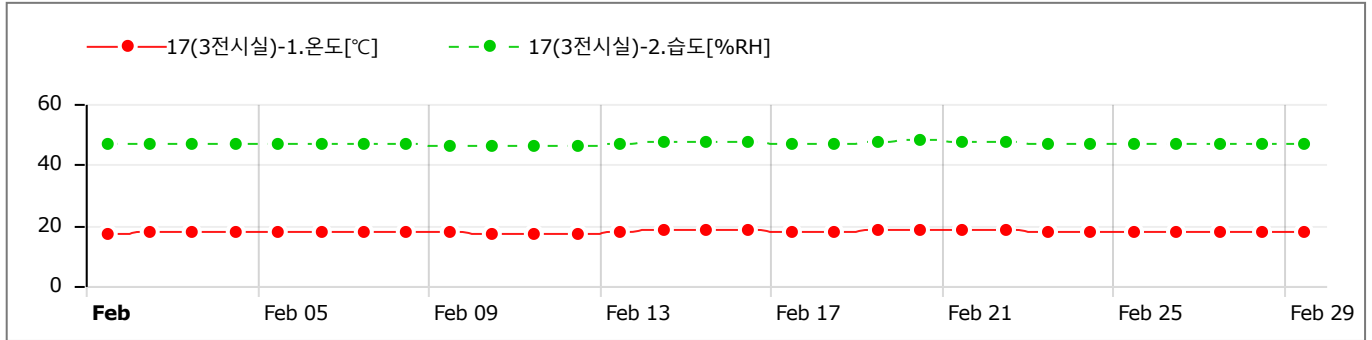


# Monthly Report

Timezone : GMT+09:00 , 2024-02-01 00:00:00~2024-02-29 23:59:59

Report Subject	17(3전시실)		
Report Author	정세리	SUPERVISOR	보존과학실
Channel 1 Info	17(3전시실)-1.온도 [unit : °C]	Channel 2 Info	17(3전시실)-2.습도 [unit : %RH]
Channel 3 Info		Channel 4 Info	

## GRAPHS



## Data Table (Avg) [ ↓ Min / ↑ Max ]

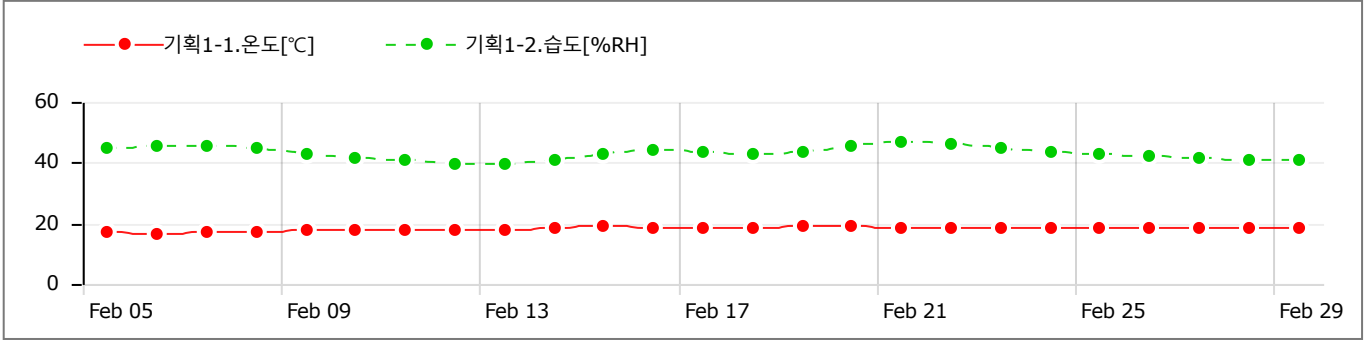
Sun	Mon	Tue	Wed	Thu	Fri	Sat
28	29	30	31	1 CH1) 17.03 [↓] CH2) 46.49	2 CH1) 17.71 CH2) 46.70	3 CH1) 17.49 CH2) 46.71
4 CH1) 17.59 CH2) 46.99	5 CH1) 17.67 CH2) 47.10	6 CH1) 17.72 CH2) 46.93	7 CH1) 17.78 CH2) 46.77	8 CH1) 17.81 CH2) 46.55	9 CH1) 17.54 CH2) 46.42	10 CH1) 17.44 CH2) 46.21 [↓]
11 CH1) 17.36 CH2) 46.23	12 CH1) 17.41 CH2) 46.40	13 CH1) 17.75 CH2) 46.66	14 CH1) 18.32 CH2) 47.38	15 CH1) 18.49 CH2) 47.68	16 CH1) 18.38 CH2) 47.35	17 CH1) 18.07 CH2) 47.07
18 CH1) 18.03 CH2) 47.14	19 CH1) 18.14 CH2) 47.47	20 CH1) 18.76 [↑] CH2) 47.83 [↑]	21 CH1) 18.47 CH2) 47.64	22 CH1) 18.20 CH2) 47.33	23 CH1) 18.06 CH2) 47.05	24 CH1) 17.88 CH2) 46.77
25 CH1) 17.92 CH2) 46.89	26 CH1) 17.80 CH2) 46.99	27 CH1) 17.89 CH2) 46.84	28 CH1) 18.06 CH2) 46.75	29 CH1) 17.61 CH2) 46.87	1	2

# Monthly Report

Timezone : GMT+09:00 , 2024-02-01 00:00:00~2024-02-29 23:59:59

Report Subject	기획1		
Report Author	정세리	SUPERVISOR	보존과학실
Channel 1 Info	기획1-1.온도 [unit : °C]	Channel 2 Info	기획1-2.습도 [unit : %RH]
Channel 3 Info		Channel 4 Info	

## GRAPHS



## Data Table (Avg) [ ↓ Min / ↑ Max ]

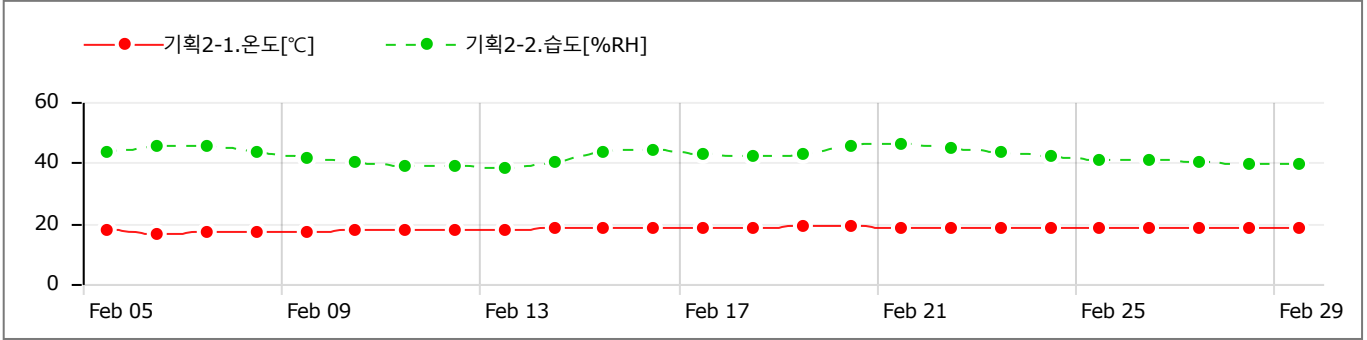
Sun	Mon	Tue	Wed	Thu	Fri	Sat
28	29	30	31	1	2	3
4	5	6	7	8	9	10
	CH1) 17.34 CH2) 44.73	CH1) 16.70 [↓] CH2) 45.55	CH1) 17.07 CH2) 45.60	CH1) 17.36 CH2) 44.62	CH1) 17.48 CH2) 42.96	CH1) 17.64 CH2) 41.64
11	12	13	14	15	16	17
CH1) 17.59 CH2) 40.55	CH1) 17.71 CH2) 39.85	CH1) 18.06 CH2) 39.59 [↓]	CH1) 18.57 CH2) 40.69	CH1) 18.82 CH2) 43.03	CH1) 18.52 CH2) 44.13	CH1) 18.40 CH2) 43.58
18	19	20	21	22	23	24
CH1) 18.49 CH2) 42.96	CH1) 18.91 CH2) 43.53	CH1) 18.99 [↑] CH2) 45.62	CH1) 18.79 CH2) 46.50 [↑]	CH1) 18.45 CH2) 45.98	CH1) 18.29 CH2) 44.92	CH1) 18.23 CH2) 43.57
25	26	27	28	29	1	2
CH1) 18.34 CH2) 42.53	CH1) 18.39 CH2) 42.28	CH1) 18.37 CH2) 41.75	CH1) 18.44 CH2) 40.98	CH1) 18.39 CH2) 40.90		

# Monthly Report

Timezone : GMT+09:00 , 2024-02-01 00:00:00~2024-02-29 23:59:59

Report Subject	기획2		
Report Author	정세리	SUPERVISOR	보존과학실
Channel 1 Info	기획2-1.온도 [unit : °C]	Channel 2 Info	기획2-2.습도 [unit : %RH]
Channel 3 Info		Channel 4 Info	

## GRAPHS



## Data Table (Avg) [ ↓ Min / ↑ Max ]

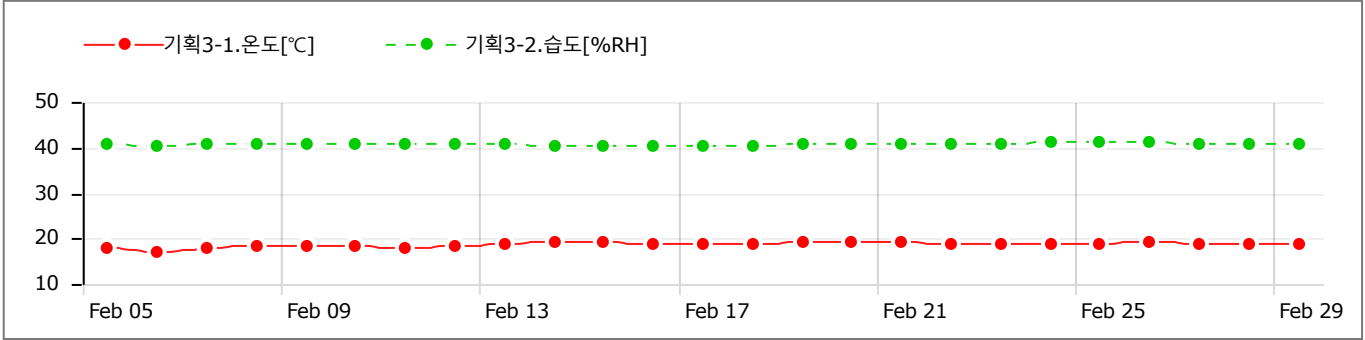
Sun	Mon	Tue	Wed	Thu	Fri	Sat
28	29	30	31	1	2	3
4	5	6	7	8	9	10
	CH1) 17.70 CH2) 43.72	CH1) 16.61 [↓] CH2) 45.80	CH1) 17.03 CH2) 45.25	CH1) 17.34 CH2) 43.27	CH1) 17.46 CH2) 41.39	CH1) 17.62 CH2) 40.17
11	12	13	14	15	16	17
CH1) 17.54 CH2) 39.19	CH1) 17.67 CH2) 38.62	CH1) 18.02 CH2) 38.51 [↓]	CH1) 18.49 CH2) 40.30	CH1) 18.69 CH2) 43.23	CH1) 18.44 CH2) 43.89	CH1) 18.35 CH2) 42.58
18	19	20	21	22	23	24
CH1) 18.46 CH2) 41.90	CH1) 18.85 CH2) 42.84	CH1) 18.90 [↑] CH2) 45.51	CH1) 18.73 CH2) 46.07 [↑]	CH1) 18.41 CH2) 44.98	CH1) 18.26 CH2) 43.55	CH1) 18.20 CH2) 41.91
25	26	27	28	29	1	2
CH1) 18.31 CH2) 40.97	CH1) 18.37 CH2) 40.92	CH1) 18.34 CH2) 40.25	CH1) 18.39 CH2) 39.42	CH1) 18.35 CH2) 39.65		

# Monthly Report

Timezone : GMT+09:00 , 2024-02-01 00:00:00~2024-02-29 23:59:59

Report Subject	기획3		
Report Author	정세리	SUPERVISOR	보존과학실
Channel 1 Info	기획3-1.온도 [unit : °C]	Channel 2 Info	기획3-2.습도 [unit : %RH]
Channel 3 Info		Channel 4 Info	

## GRAPHS



## Data Table (Avg) [ ↓ Min / ↑ Max ]

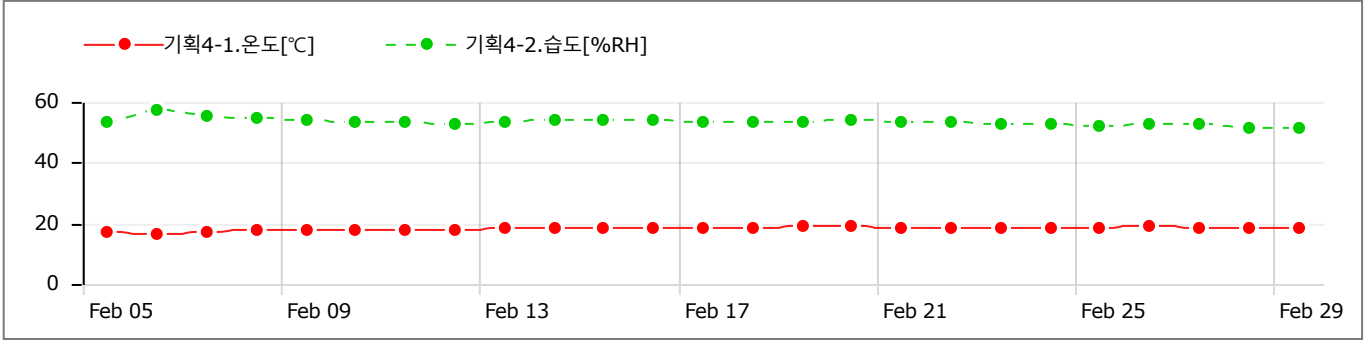
Sun	Mon	Tue	Wed	Thu	Fri	Sat
28	29	30	31	1	2	3
4	5	6	7	8	9	10
	CH1) 17.79 CH2) 40.89	CH1) 16.82 [↓] CH2) 40.28 [↓]	CH1) 17.79 CH2) 40.57	CH1) 18.25 CH2) 40.75	CH1) 18.26 CH2) 40.81	CH1) 18.39 CH2) 40.79
11	12	13	14	15	16	17
CH1) 17.97 CH2) 40.64	CH1) 18.29 CH2) 40.63	CH1) 18.76 CH2) 40.57	CH1) 19.11 CH2) 40.50	CH1) 19.23 CH2) 40.42	CH1) 19.00 CH2) 40.41	CH1) 18.83 CH2) 40.43
18	19	20	21	22	23	24
CH1) 18.90 CH2) 40.50	CH1) 19.40 [↑] CH2) 40.66	CH1) 19.36 CH2) 40.68	CH1) 19.21 CH2) 40.78	CH1) 18.68 CH2) 40.84	CH1) 18.66 CH2) 40.98	CH1) 18.69 CH2) 41.04
25	26	27	28	29	1	2
CH1) 18.76 CH2) 41.07	CH1) 19.13 CH2) 41.10 [↑]	CH1) 18.91 CH2) 40.98	CH1) 18.87 CH2) 40.91	CH1) 18.64 CH2) 40.80		

# Monthly Report

Timezone : GMT+09:00 , 2024-02-01 00:00:00~2024-02-29 23:59:59

Report Subject	기획4		
Report Author	정세리	SUPERVISOR	보존과학실
Channel 1 Info	기획4-1.온도 [unit : °C]	Channel 2 Info	기획4-2.습도 [unit : %RH]
Channel 3 Info		Channel 4 Info	

## GRAPHS



## Data Table (Avg) [ ↓ Min / ↑ Max ]

Sun	Mon	Tue	Wed	Thu	Fri	Sat
28	29	30	31	1	2	3
4	5	6	7	8	9	10
CH1) 17.09 CH2) 53.55	CH1) 17.74 CH2) 54.16	CH1) 16.74 [↓] CH2) 57.30 [↑]	CH1) 17.32 CH2) 55.55	CH1) 17.66 CH2) 54.77	CH1) 17.74 CH2) 54.16	CH1) 17.92 CH2) 53.46
11	12	13	14	15	16	17
CH1) 17.56 CH2) 53.08	CH1) 17.79 CH2) 52.98	CH1) 18.24 CH2) 53.25	CH1) 18.59 CH2) 54.11	CH1) 18.71 CH2) 54.32	CH1) 18.52 CH2) 53.98	CH1) 18.38 CH2) 53.44
18	19	20	21	22	23	24
CH1) 18.44 CH2) 53.21	CH1) 19.08 [↑] CH2) 53.56	CH1) 18.90 CH2) 53.88	CH1) 18.70 CH2) 53.51	CH1) 18.28 CH2) 53.31	CH1) 18.25 CH2) 52.77	CH1) 18.27 CH2) 52.52
25	26	27	28	29	1	2
CH1) 18.33 CH2) 52.33	CH1) 18.90 CH2) 52.68	CH1) 18.52 CH2) 52.42	CH1) 18.46 CH2) 51.75	CH1) 18.32 CH2) 51.46 [↓]		