



Status of the Rail Transportation in the Philippines

Louernie F. de Sales, PhD
University of the Philippines

Introduction

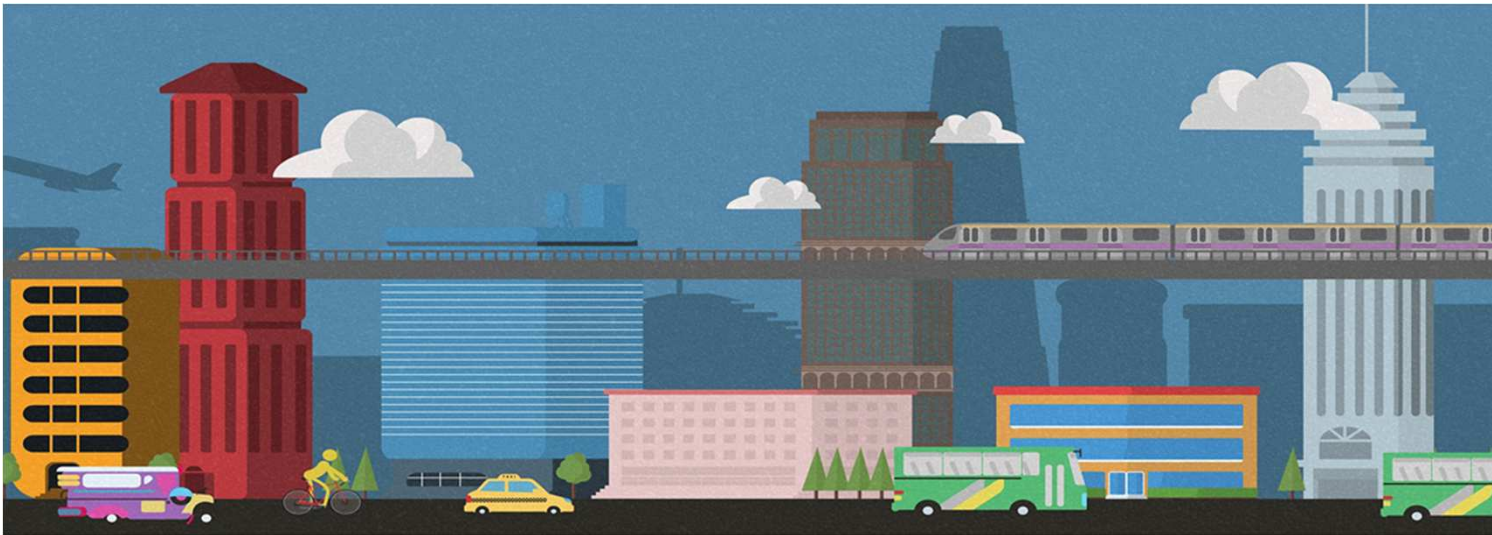
Status

Metro Manila

Framework

Projects

The **Department of Transportation (DOTr)** is the executive department responsible for the maintenance and expansion of viable, efficient, and dependable transportation systems as effective instruments for national recovery and economic progress.



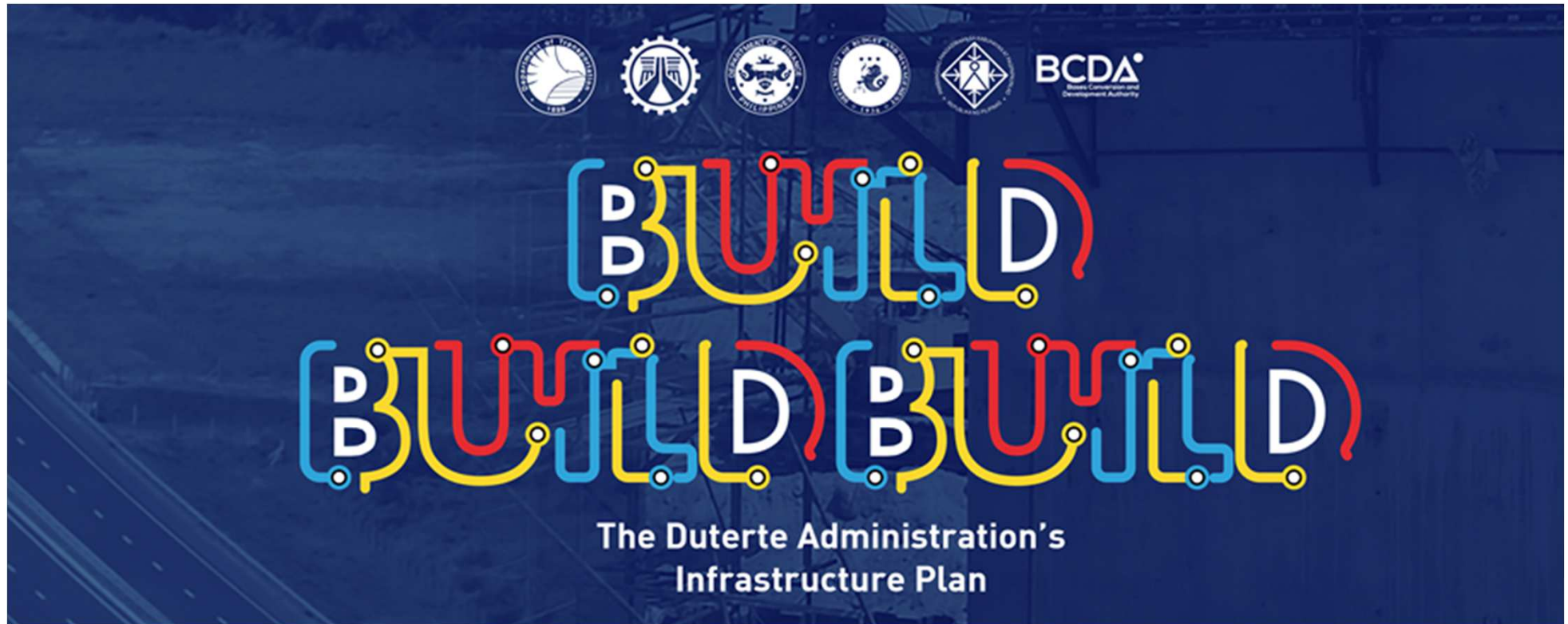
Introduction

Status

Metro Manila

Safety

Projects



Rail Transport in the Philippines

- Growing means of transportation for passengers and cargo in the country
- Means of transportation are used typically for rapid transport within major cities as well as long distance travel.
- Philippine railway network consists of one commuter rail service provided by the Philippine National Railways (PNR), and a rapid transit system operated by the Light Rail Transit Authority (LRTA) and Metro Rail Transit Corporation (MRTC).
 - **Luzon**
 - **Panay**
 - **Cebu**
 - **Rehabilitation Projects**
 - **Commuter Rail**
 - **Rapid Transit**
 - **MRTC System**
 - **AGT System**
 - **Proposed Subway Project**

Railway Management in the Philippines

- **Philippine National Railway**
- **LRT Line 1 (Roosevelt to Baclaran Stations)**
 - **PPP Project managed by Light Rail Manila Corporation (LRMC);
32 years for operation and maintenance**
- **LRT 2 – D. Jose Station to Masinag Station**
 - **Managed by the Light Rail Transit Authority**
- **MRT 3 – from Trinoma to Edsa Taft Station**
 - **Managed by DOTr**

Introduction

Status

Metro Manila

Safety

Projects



The Railway System in Metro Manila

- LRT 1 – Roosevelt to Baclaran Stations
- MRT 3 – from Trinoma to EDSA Taft Station
- LRT 2 – D. Jose Station to Masinag

NEWS

Filtered By: News

Man ends up in ICU after foot got stuck in moving LRT train's door

Published November 7, 2017 8:09pm



An LRT-1 passenger ended up in the intensive care unit after his left foot got stuck in the train's closing door causing him to be dragged on the platform on Monday morning. (GMA News) Jun

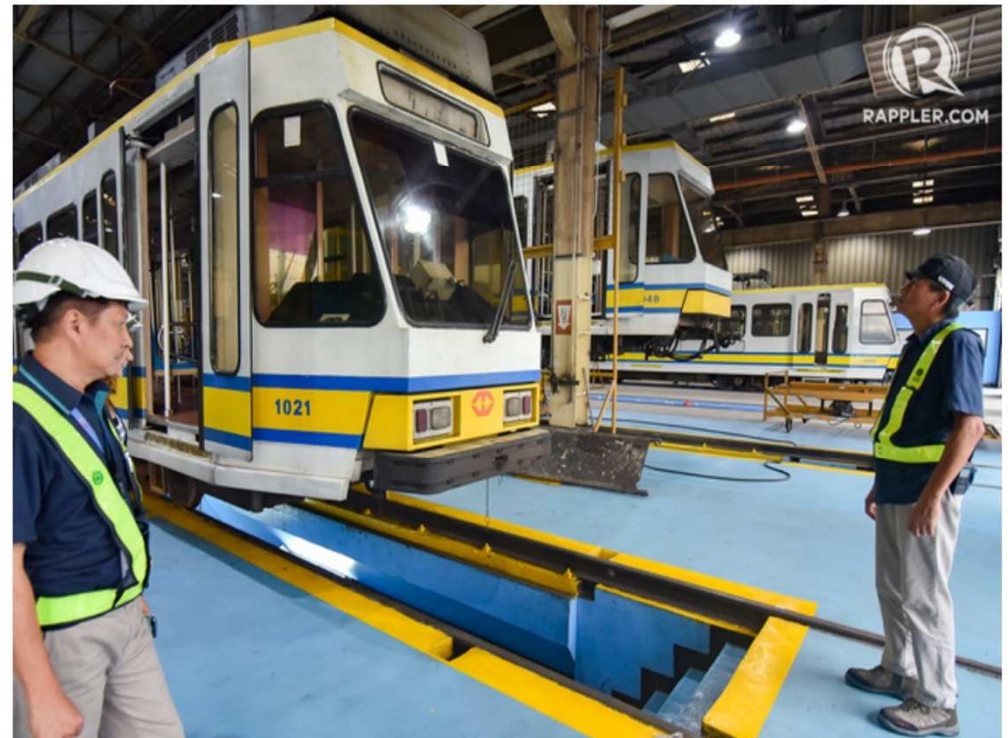
LRT1 commuter injured after foot got caught in door of moving train

An LRT1 official says the accident happened when 48-year-old Julieta Eco tried to get on the coach even after the warning buzzer sounded off

Rappler.com

Published 5:43 PM, November 08, 2017
Updated 5:46 PM, November 08, 2017

- Facebook
- Twitter
- Reddit
- Email



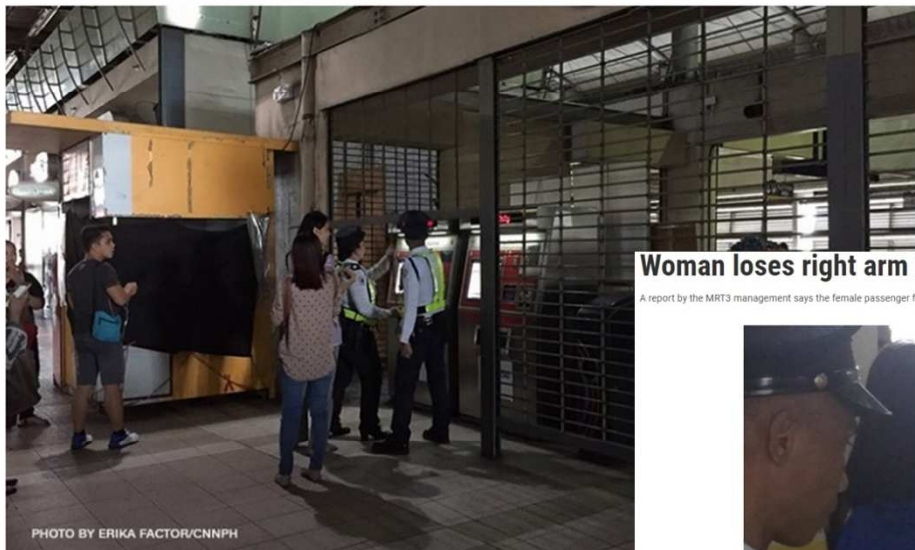
MRT commuter's arm reattached following accident

By VJ Bacungan, CNN Philippines

Updated 10:45 AM PHT Wed, November 15, 2017

8.4K
49

좋아요 공유하기 Riza Altea 님 외 241만명이 좋아합니다.



Woman loses right arm in MRT3 accident

A report by the MRT3 management says the female passenger felt lightheaded as she alighted at the Ayala Station, then fell onto the railway tracks



VIDEO COURTESY OF WAPE & LONGALA

BRASO PUTOL!

BRASONG NAPUTOL SA SOLONG ANAK NA 'BREADWINNER', NAIBALIK NA!

REPORTING
VICTOR DE GUZMAN

DZRNEWS

Introduction

Status

Metro Manila

Safety

Projects



Introduction

Status

Metro Manila

Safety

Projects



Introduction

Status

Metro Manila

Safety

Projects

- **Grand Central Terminal or Common Station (LRT-Line 1)**

This LRT-Line 1 extension project is an interchange station that will link the rail line to MRT-Line 3, MRT-Line 7, and MRT-Line 9. The initial plans for this project include a multi-level station with concourse in front of SM City North EDSA. It aims to provide seamless transition between four (4) major rail transit lines (with MRT-Line 7 and MRT-Line 9 still to be built).

- **North-Sourth Commuter Railway (NSCR) - Project**

It is the north commuter line that would once again connect Metro Manila to the provinces in the North. The rail line passing through Clark, Pampanga and terminates at Dagupan City in Pangasinan will be revived under this project.

- **South Extension Project (LRT-Line 1)**

The 11.7-kilometer LRT-Line 1 Cavite Extension Project will be implemented by the Department of Transportation (DOTr). This project will connect Baclaran Station to the future Niog Station in Bacoor, Cavite. The entire project is worth P44.65 billion under the Build-Transfer-and-Operate (BTO) scheme.

Introduction

Status

Metro Manila

Safety

Projects

- East Extension Project (LRT-Line 2)

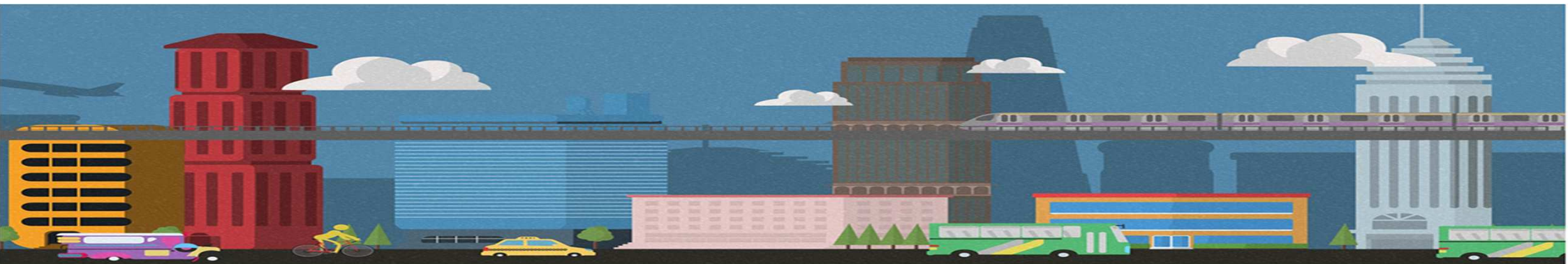
From the existing Santolan Station of LRT-Line 2, two more additional stations connected by 4.19-kilometer rail line will be constructed eastward along Marcos Highway. These additional stations are Emerald Station (in between Robinson's Metro East Mall and Sta. Lucia Mall in Cainta) and Masinag Station (near the junction of Marcos and Sumulong Highways in Antipolo City). The project cost amounts to P9.51 billion and is expected to be built by 2016.

- Mass Rapid Transit Extension Line (MRT-Line 3)

Although the plan for this project is not that clear as compared with other projects mentioned above, an extension of the existing rail line from Taft Avenue to SM Mall of Asia is a possibility.

Conclusion

- **The Philippine Railway System is not as established as in other countries**
- **We need to adopt best practices in other mature railway system in other countries**
- **Exchange of learnings are welcome**





Thank You!



Sources:

<http://dotr.gov.ph/>

https://www.researchgate.net/publication/319263143_The_Philippine_Railway_System

http://asianrailways.wikia.com/wiki/Rail_transport_in_the_Philippines