



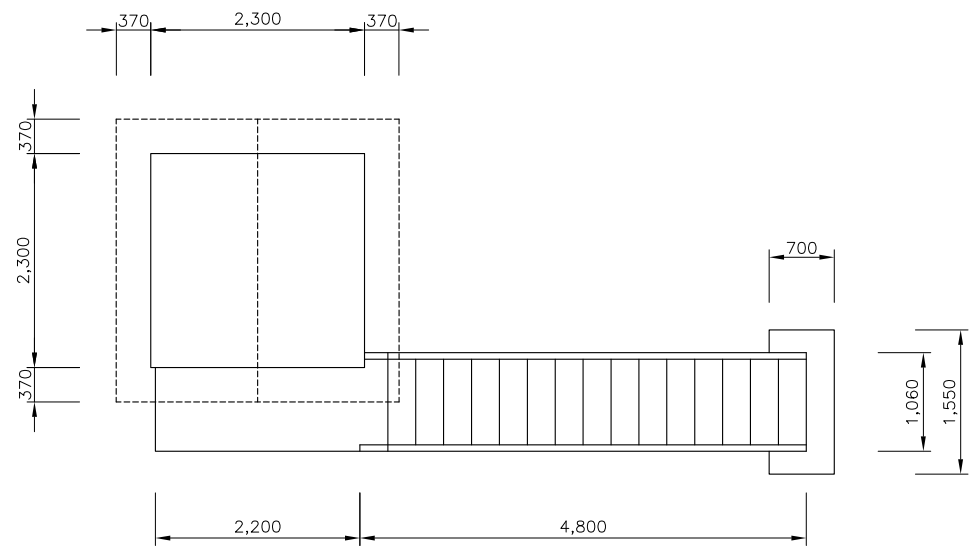
조수철거(B)

조수철거(C)
상부조수철거, 외벽마감

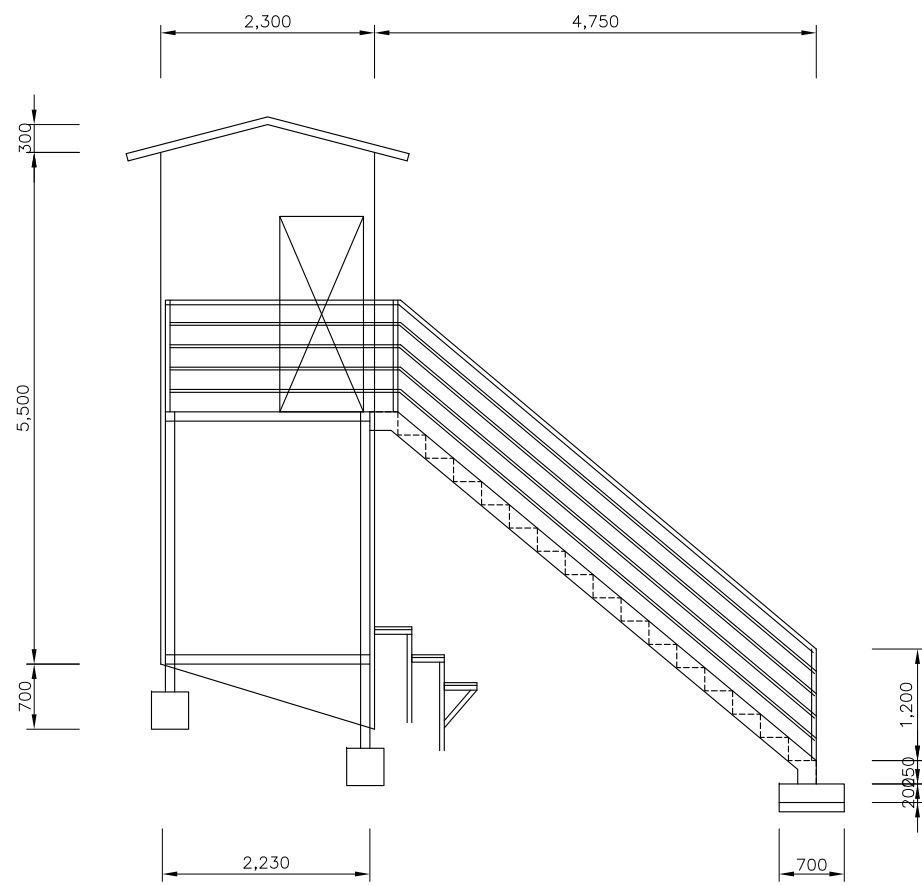
조수철거(A)
철거 후 CCTV동 설치

조수철거(D)

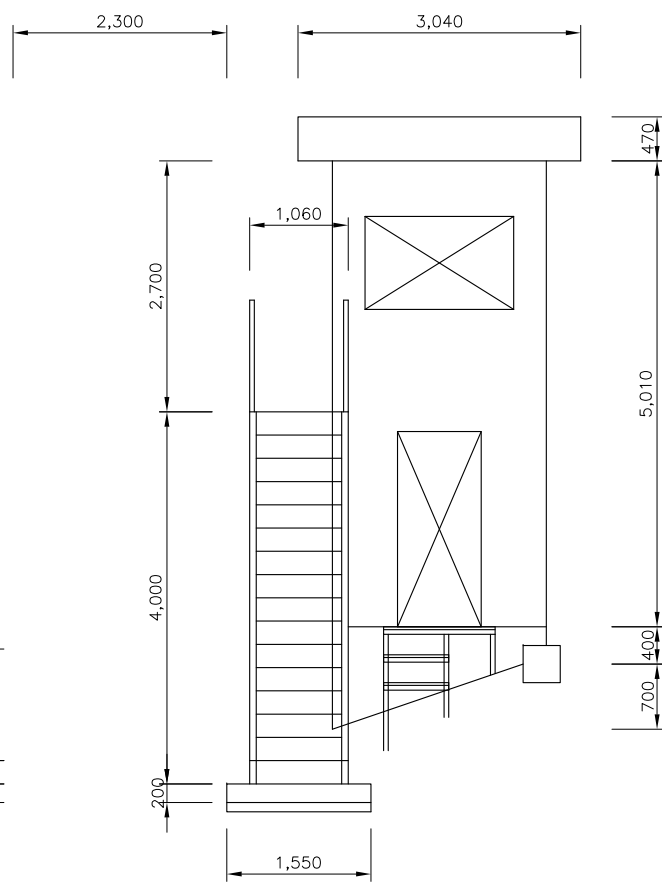
전체 배치도
축척: A3=1/3000



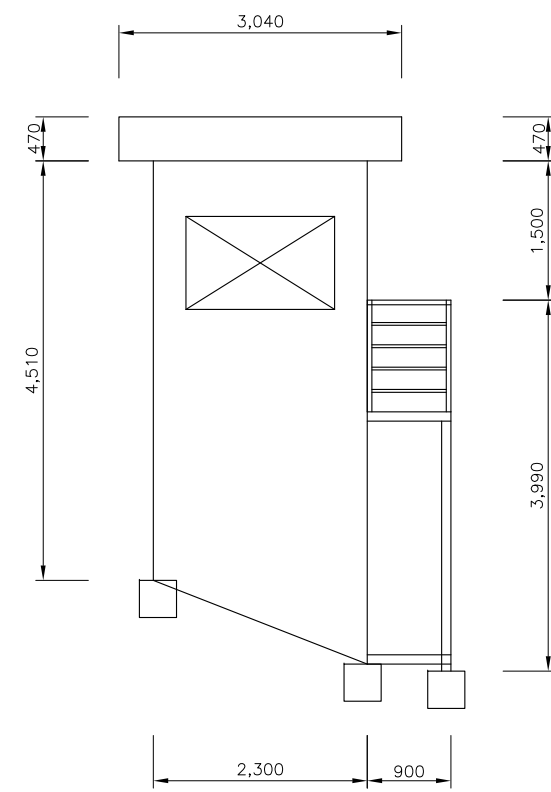
평면도



좌측면도



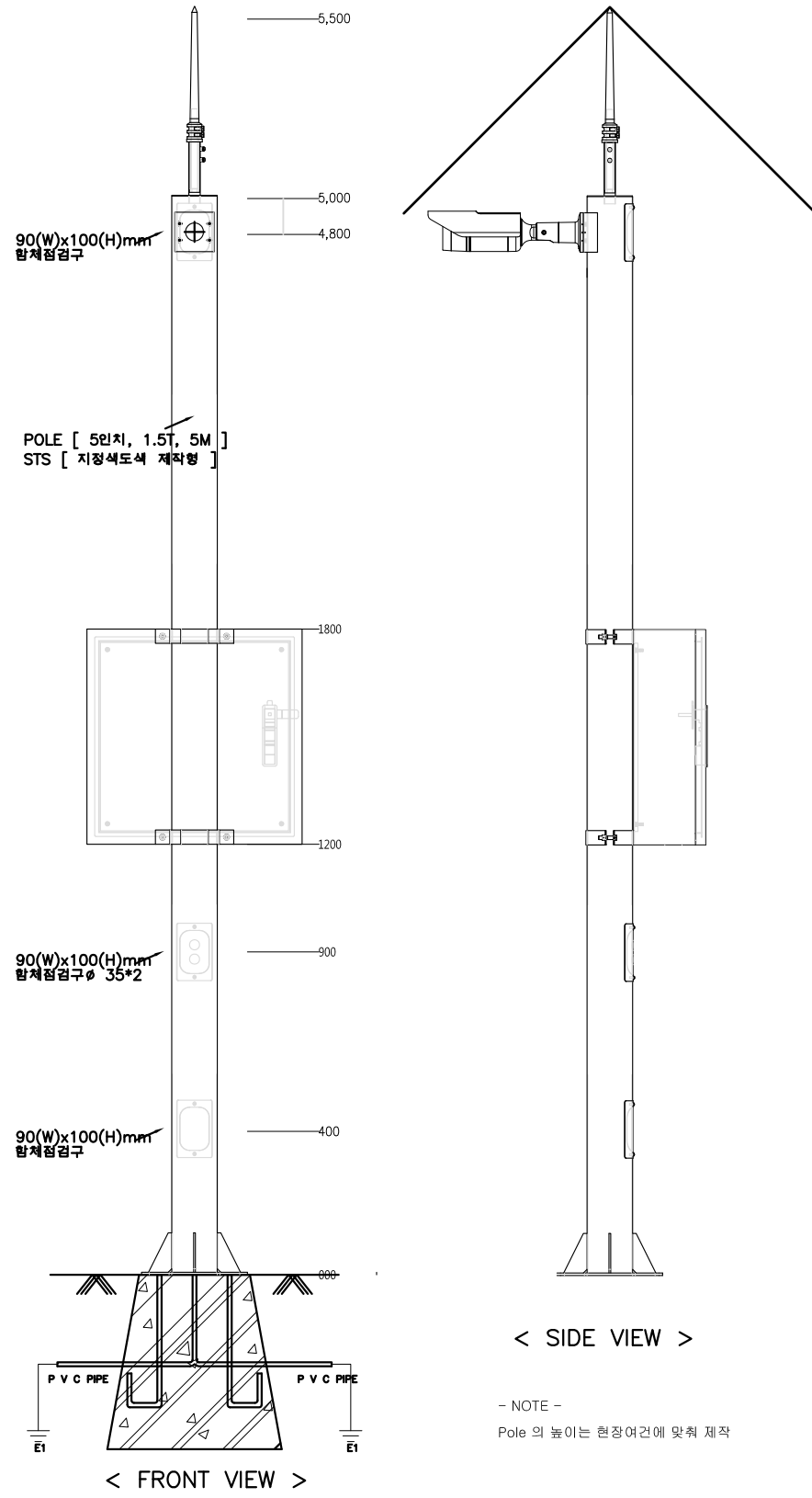
정면도



후면도

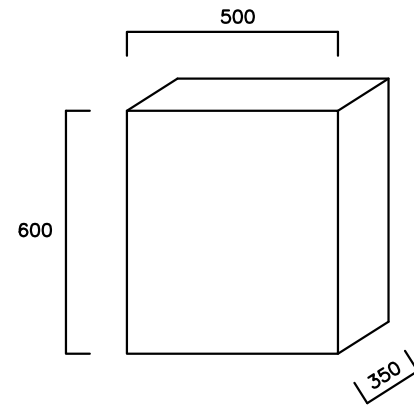
1 초소 상세도
 축척: A3=1/NONE

POLE TYPE



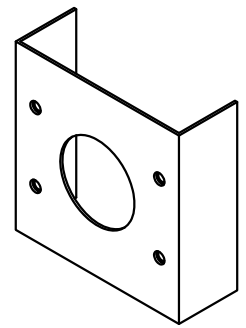
- NOTE -
Pole 의 높이는 현장여건에 맞춰 제작

제 어 함 체



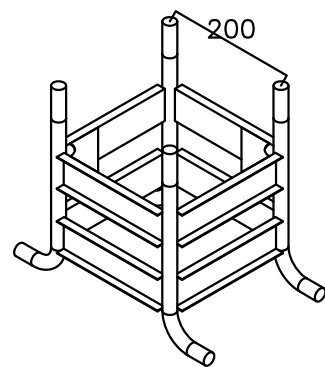
- NOTE -
기존 제어함체 설치 500x600x350

POLE BRACKET



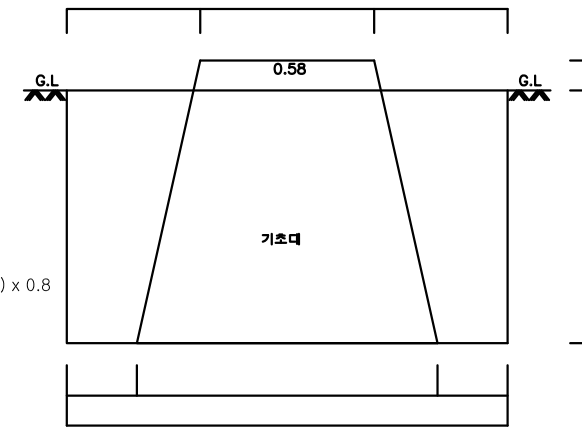
- NOTE -
카메라 브라켓 출구원에 맞게 제작

ANCHOR BOLT



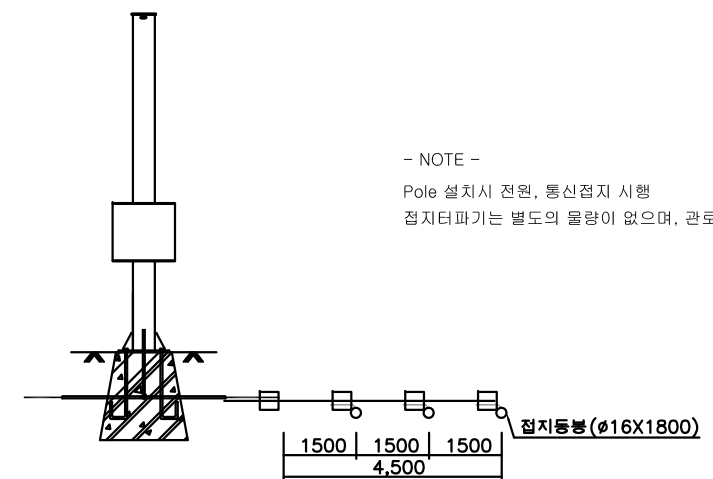
용융볼트 3/4
인치 L=300
200mm간격

기초대 터파기

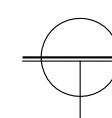
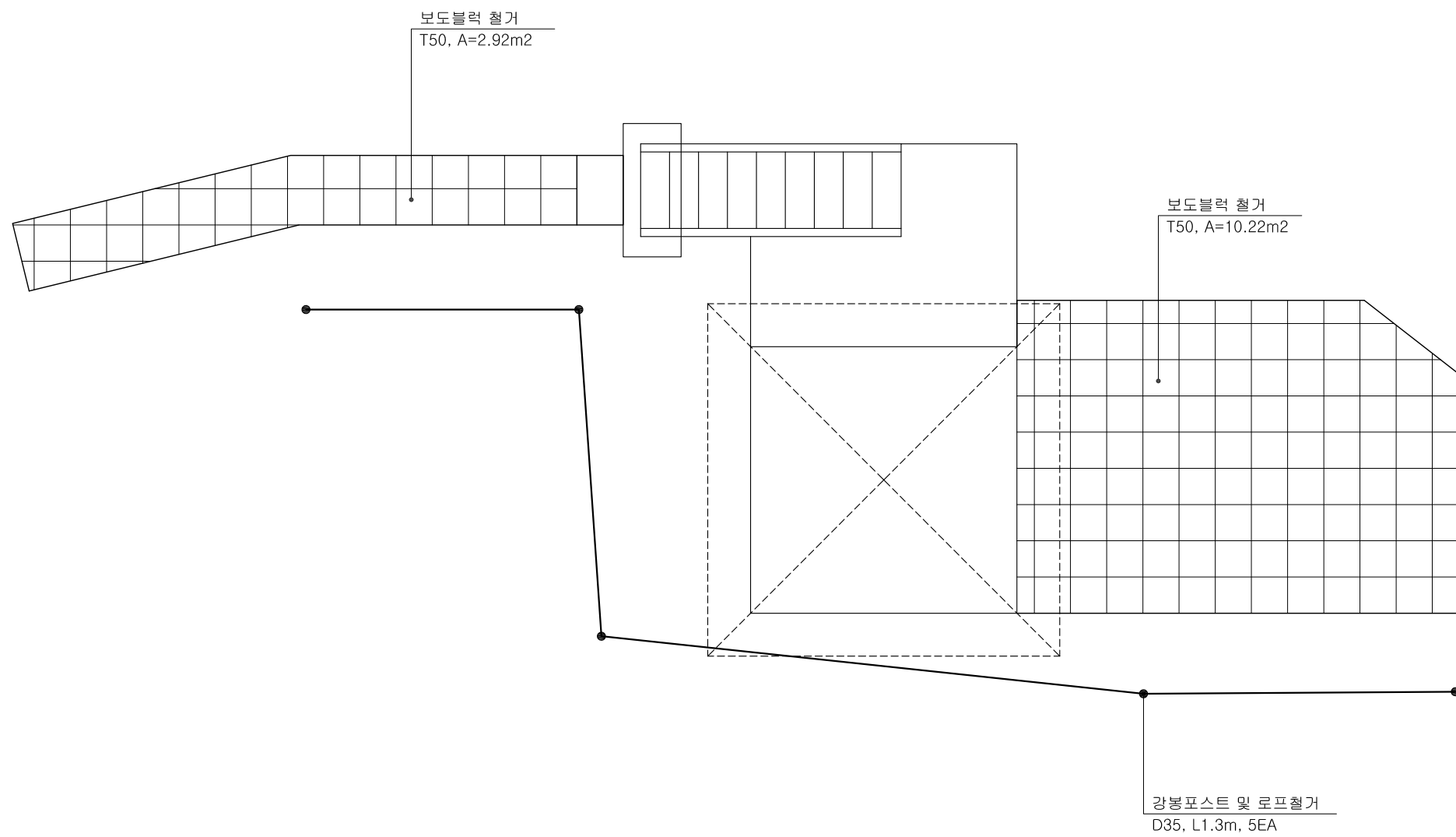


*NONE
터파기
 $1.4 \times 1.4 \times 0.8 = 1.56 \text{ m}^3$
체적
 $((0.58+1.0)/2 \times (0.58+1.0)/2) \times 0.8 = 0.49$
되메우기
 $1.59 - 0.49 = 1.07$
잔토: 0.49

통신집지

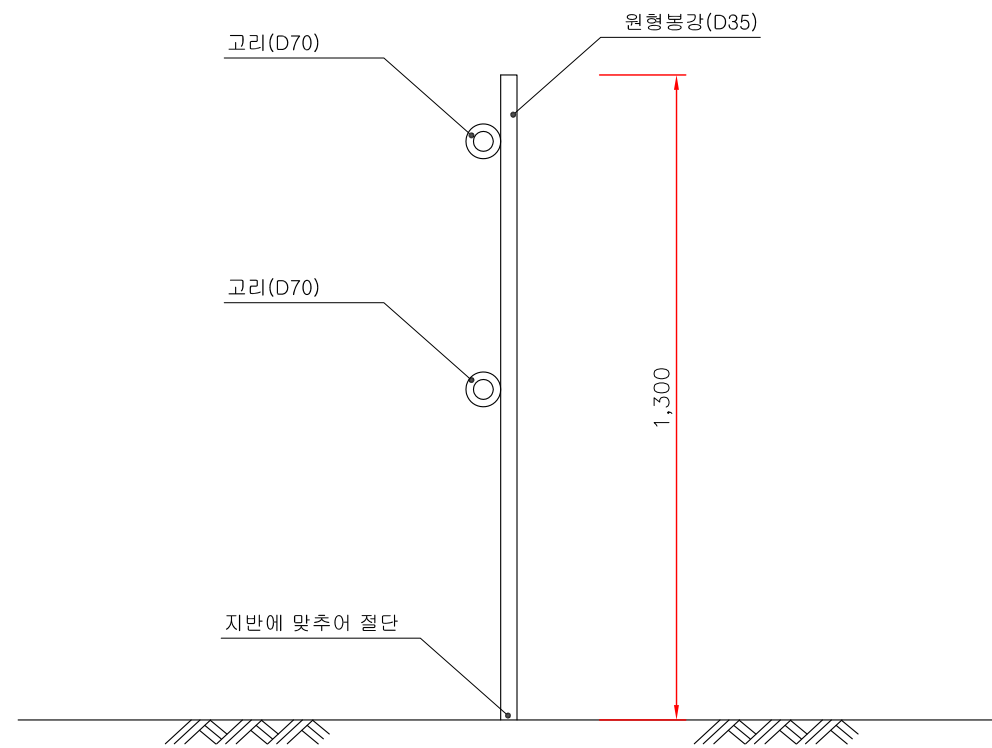


- NOTE -
Pole 설치시 전원, 통신집지 시행
접지터파기는 별도의 물량이 없으며, 관로 터파기 사용

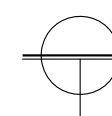


2 초 소 배 치 도

축 척:A3=1/NONE

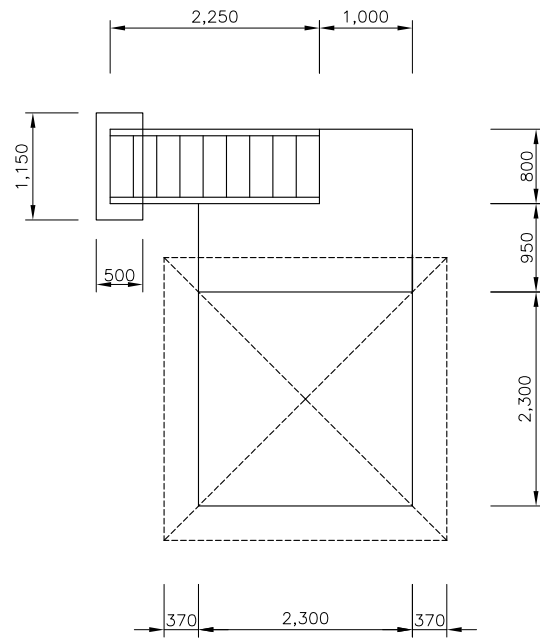


입 면 도

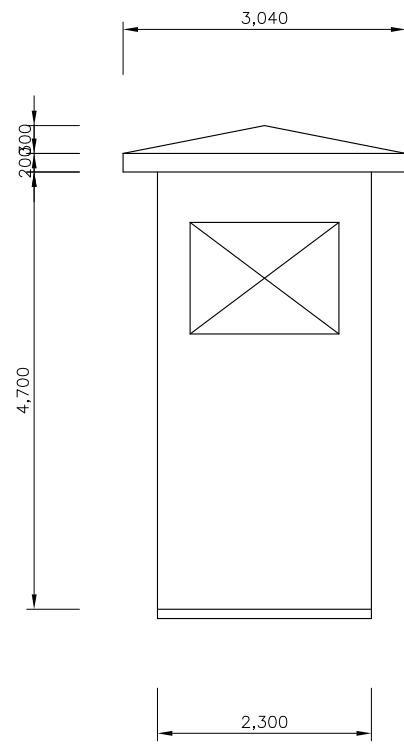


철거 난간 상세도

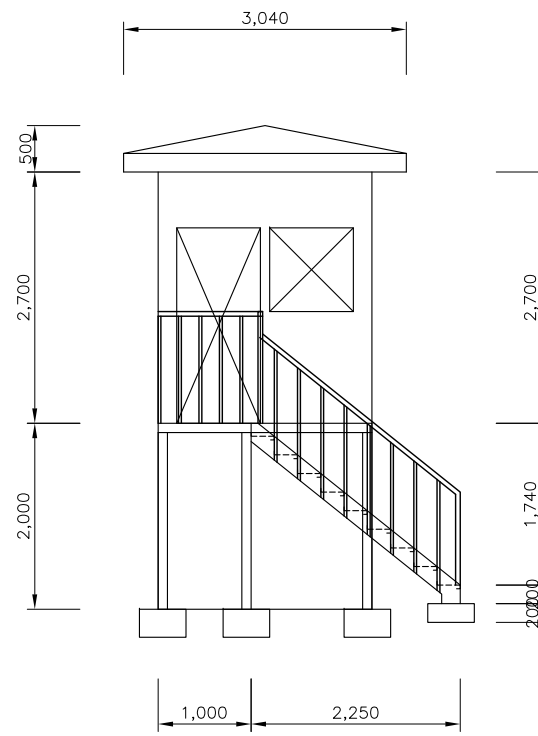
축 척:A3=1/NONE



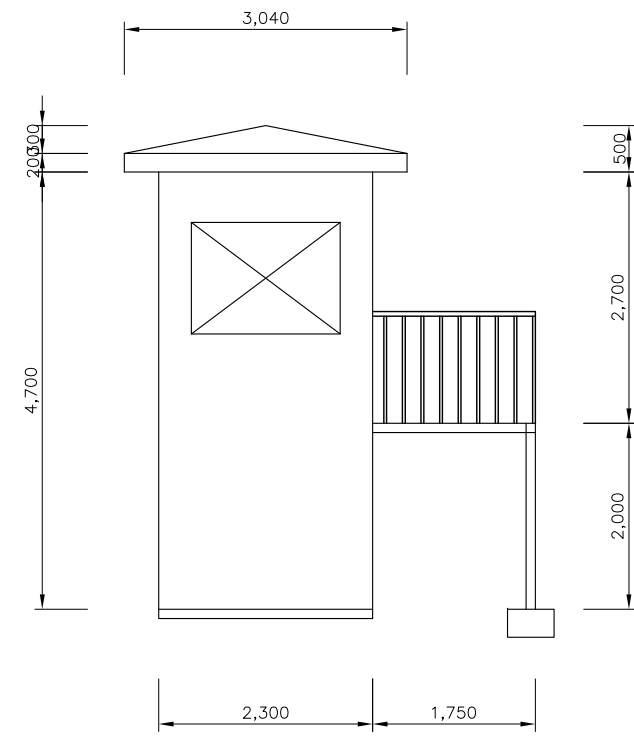
평면도



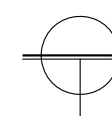
우측면도



좌측면도

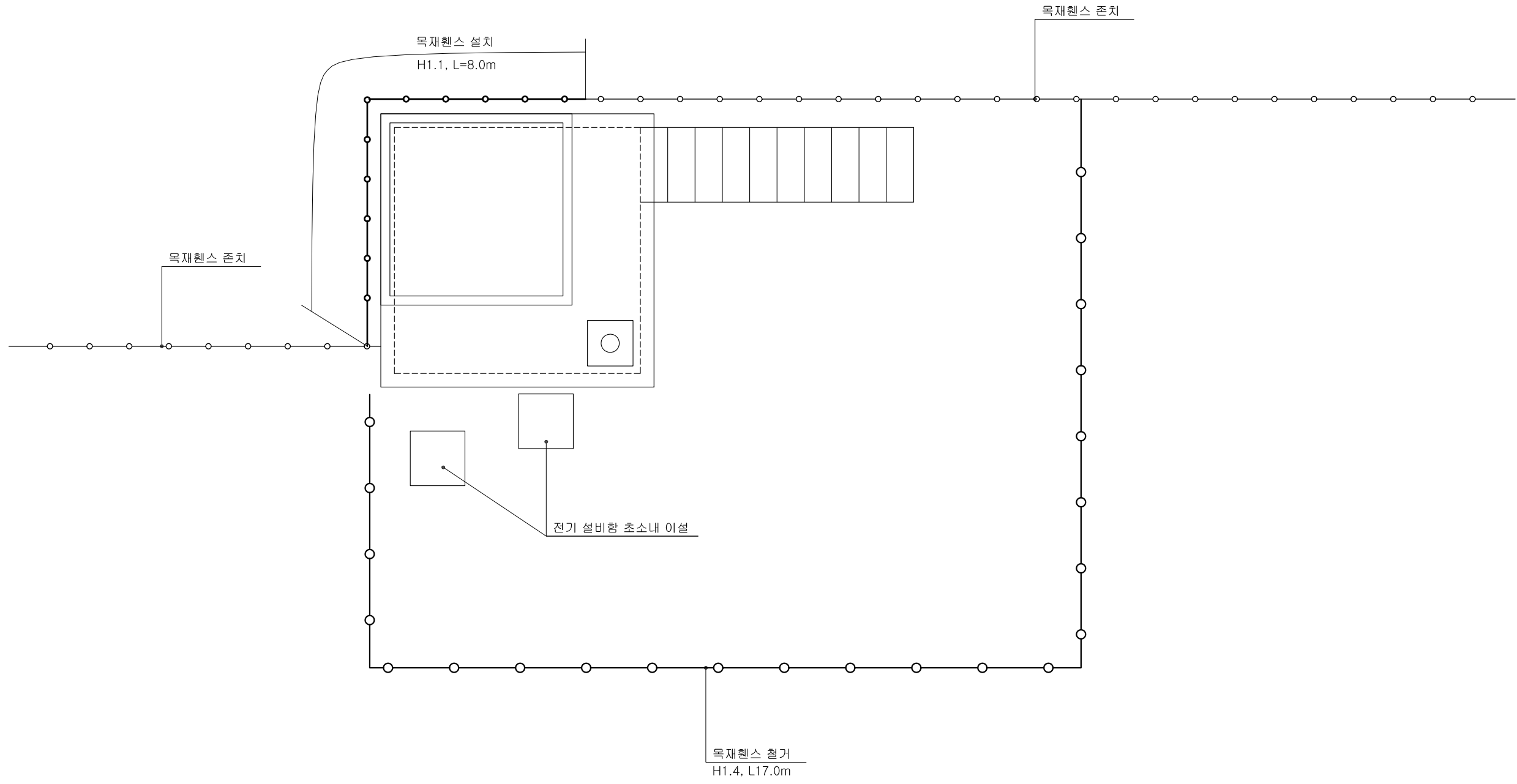


후면도

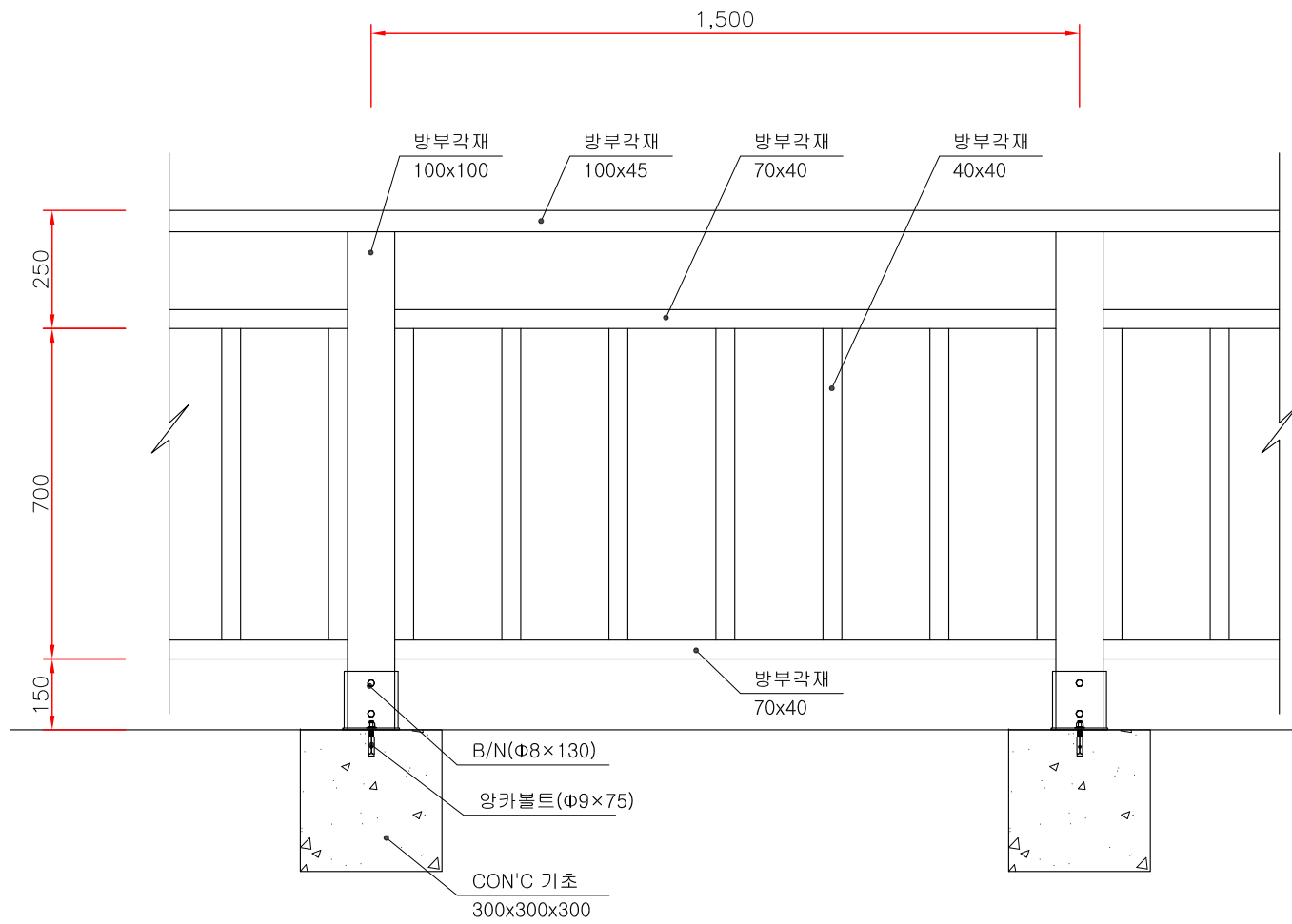


2 초소 상세도

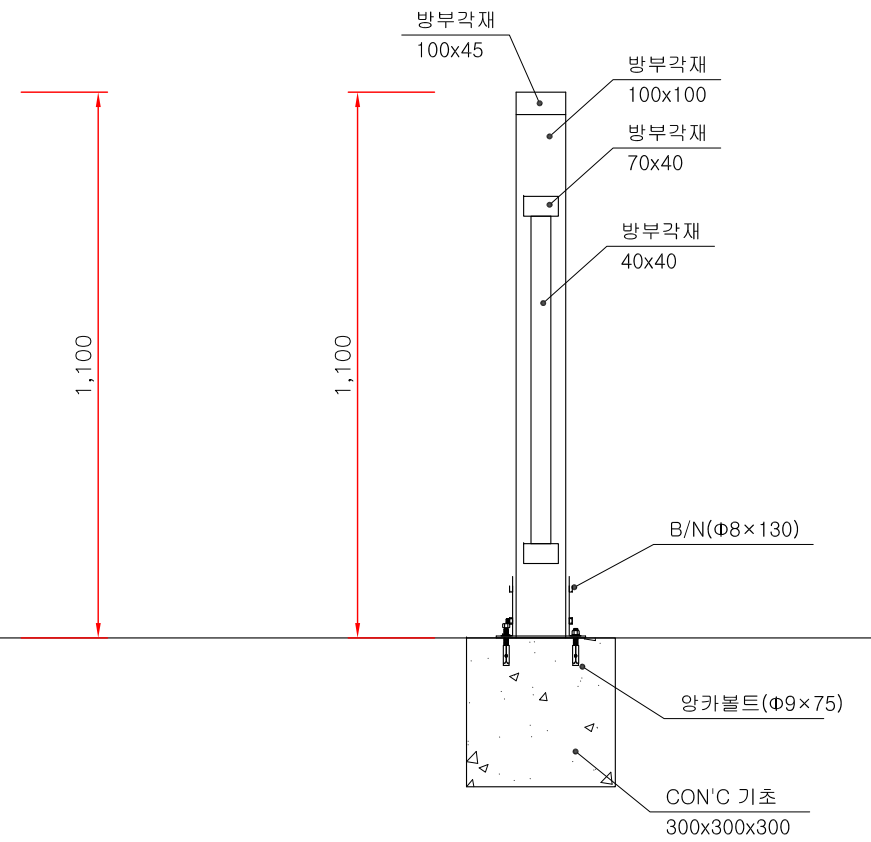
축척:A3=1/NONE



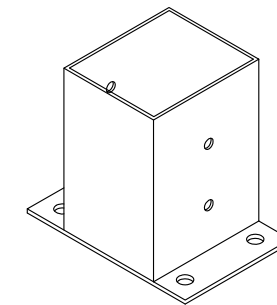

3 초소 배치도
 축 척:A3=1/NONE



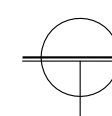
입면도



단면도

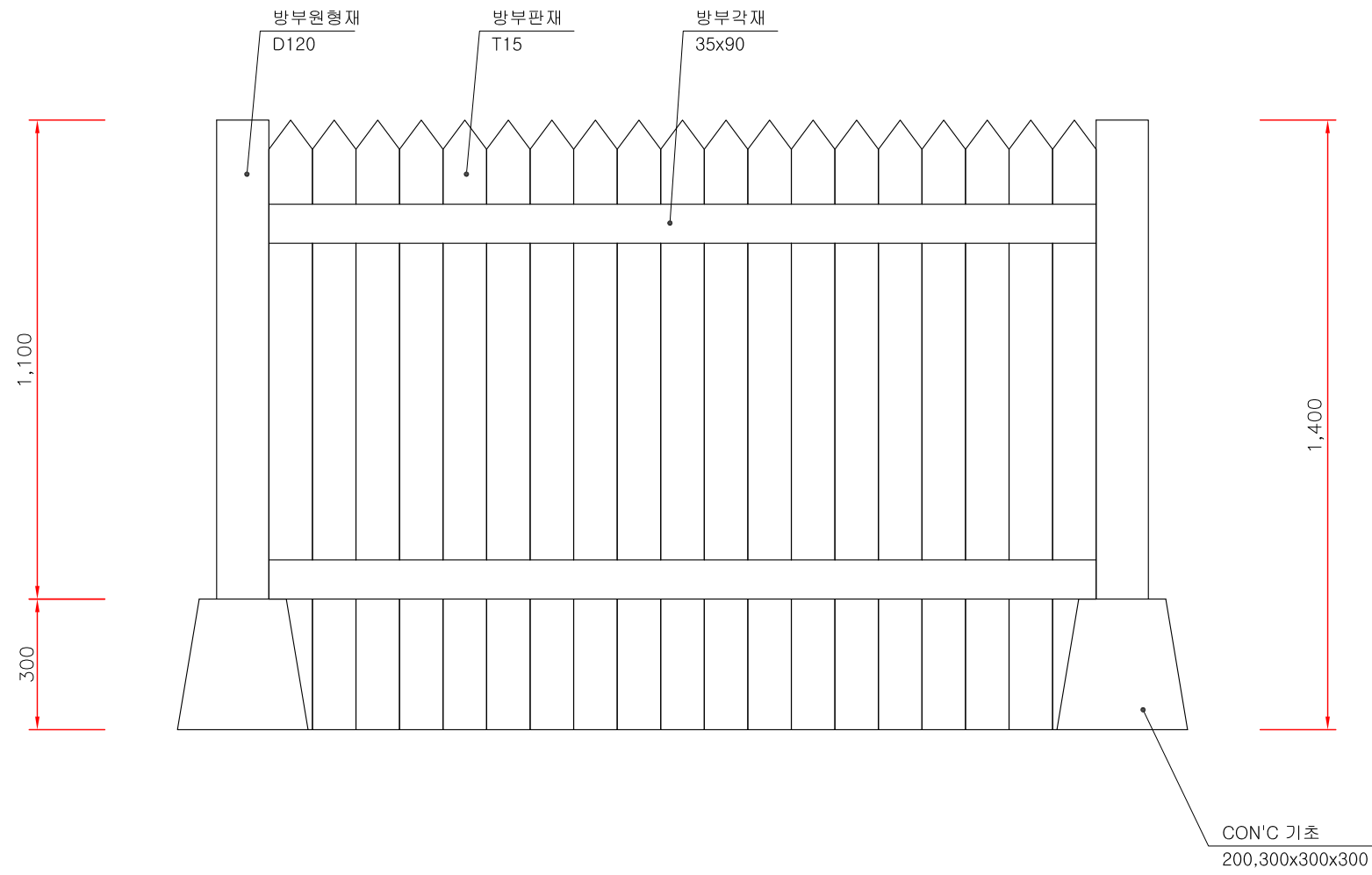


기초철물

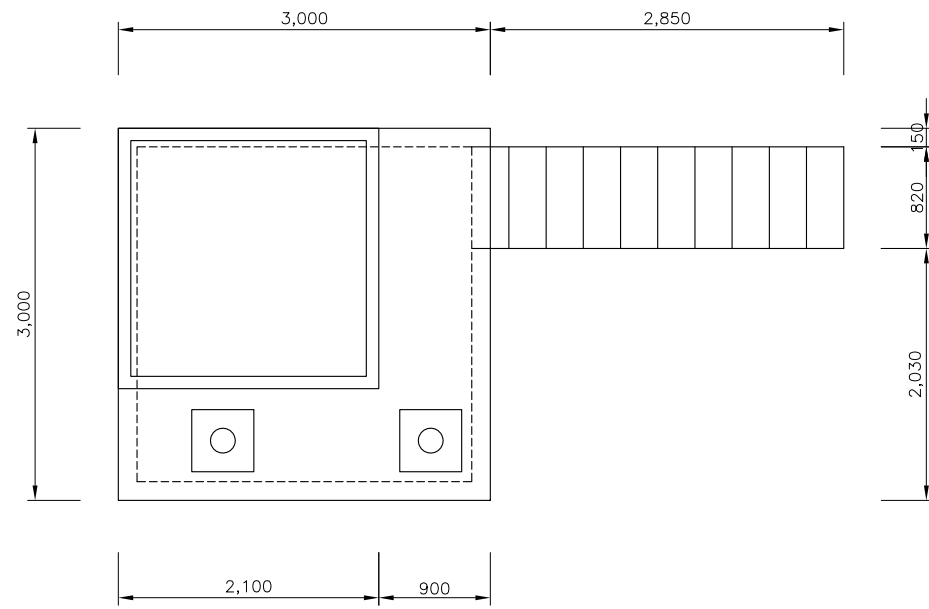


계획 난간 상세도

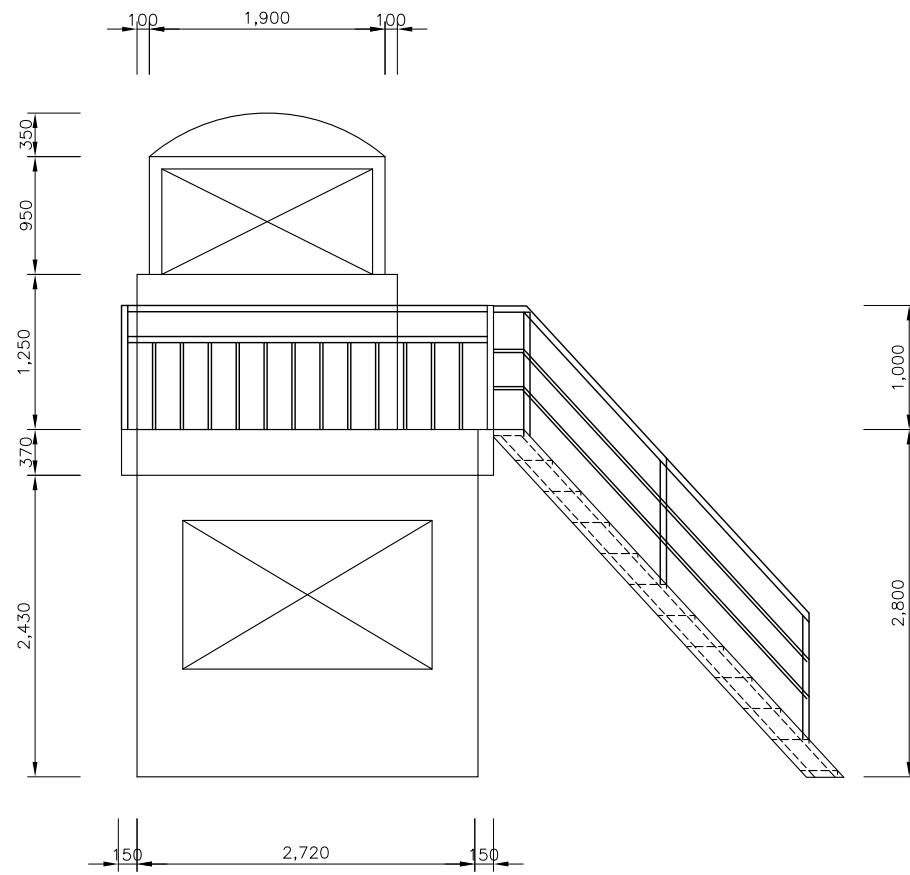
축척:A3=1/NONE



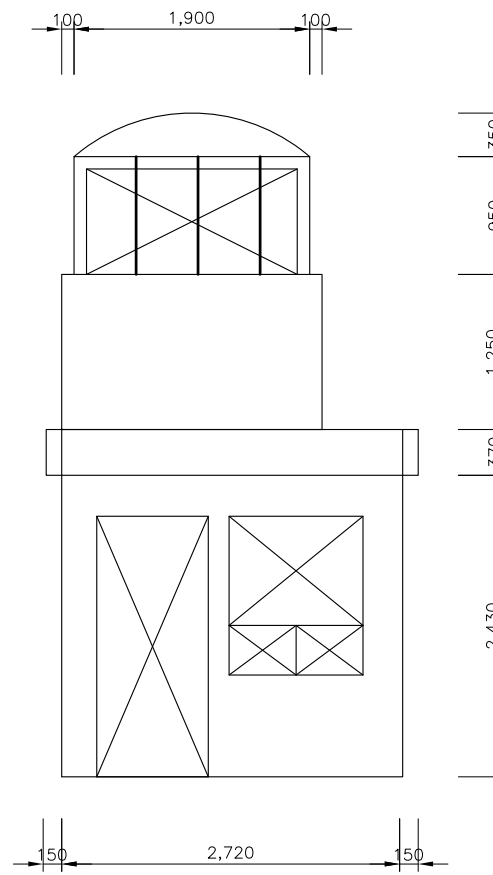
철거 난간 상세도
 축 척:A3=1/NONE



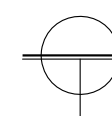
평면도



좌측면도

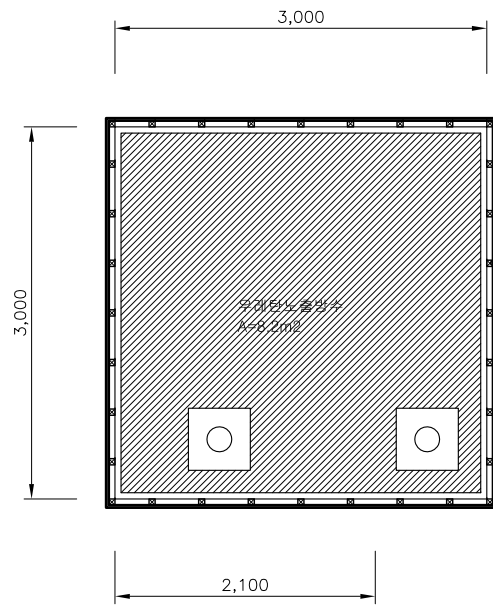


정면도

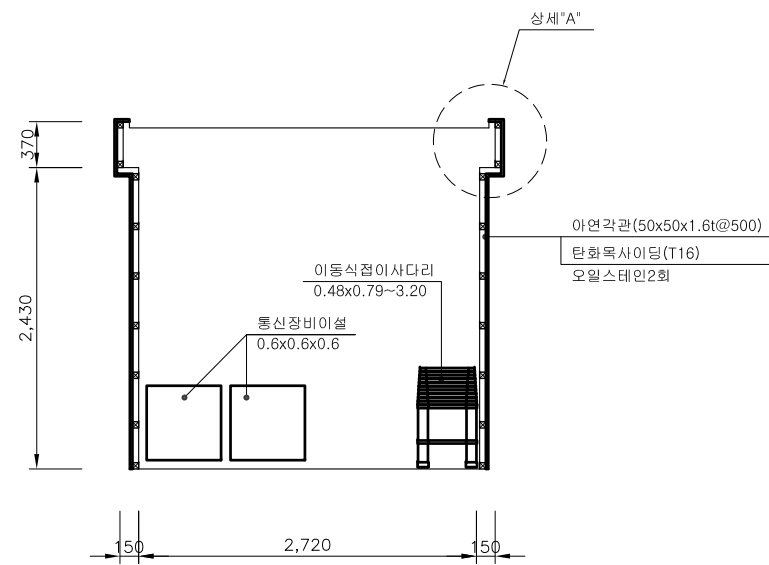


3 초소 상세도

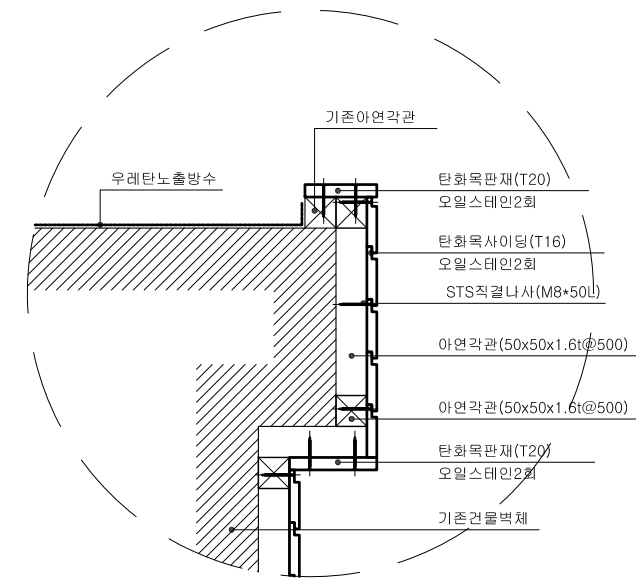
축척:A3=1/NONE



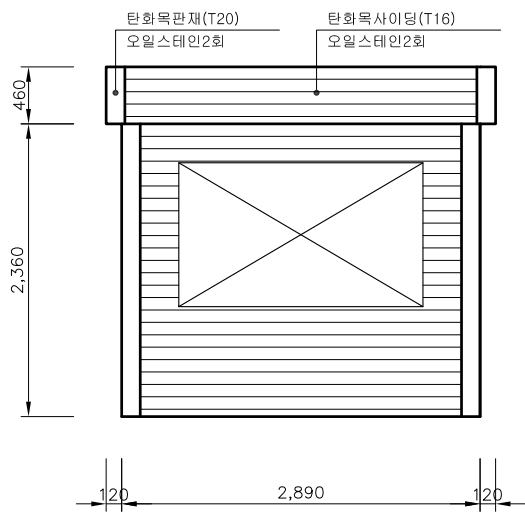
지붕 평면도



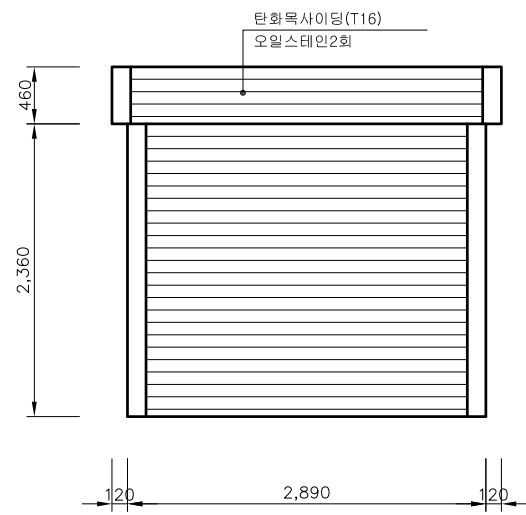
단면도



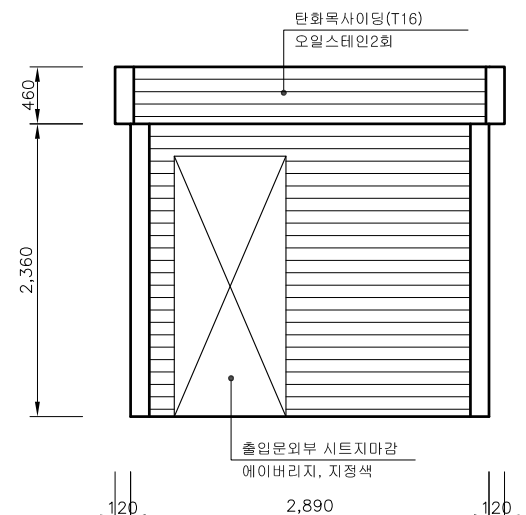
"A" 상세도



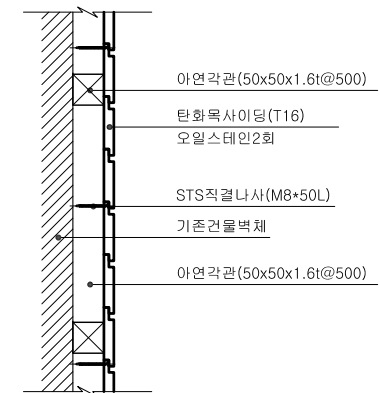
우측면도



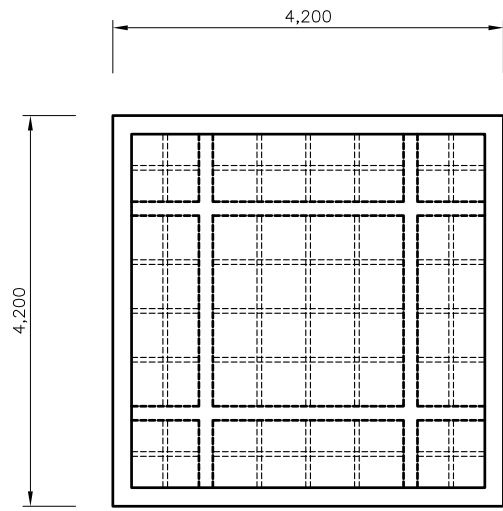
좌측면도



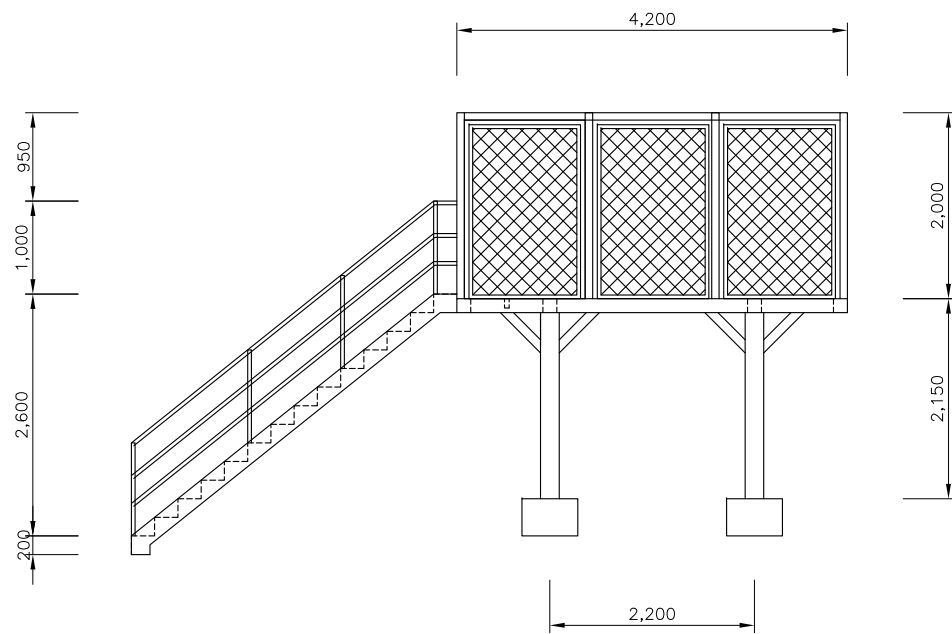
정면도



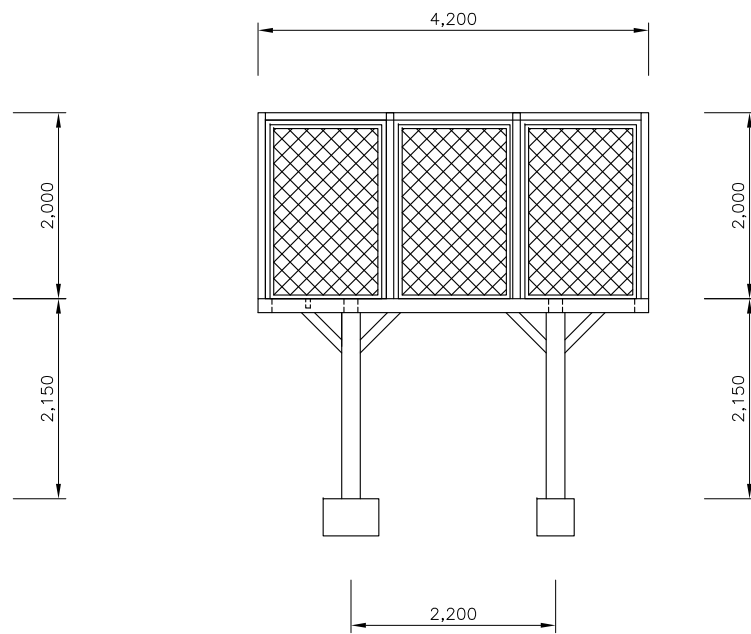
마감상세도



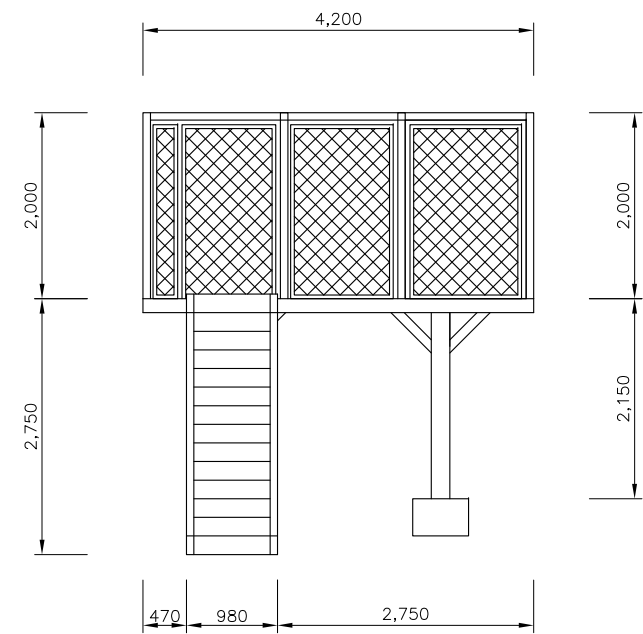
평면도



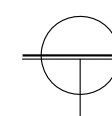
우측면도



후면도

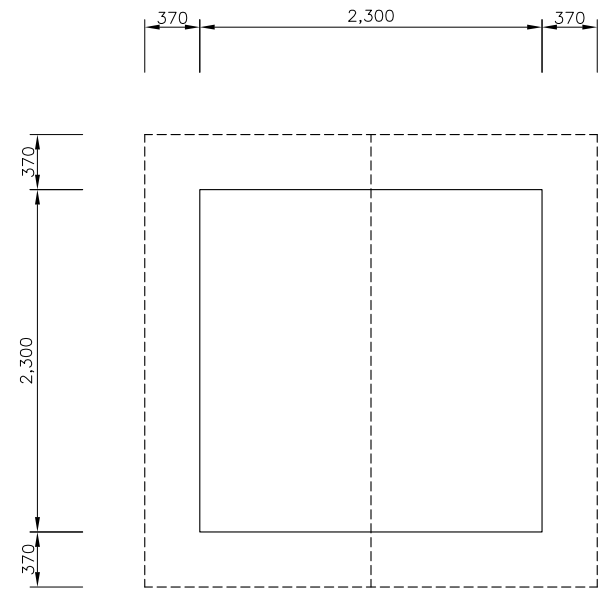


정면도

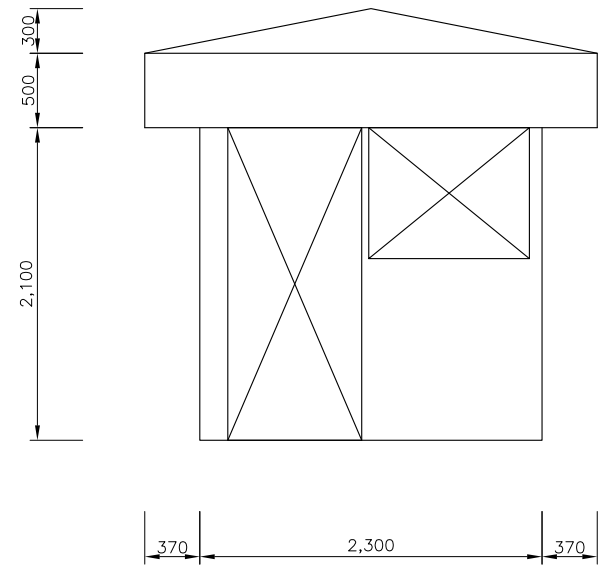


4 초소 상세도(1)

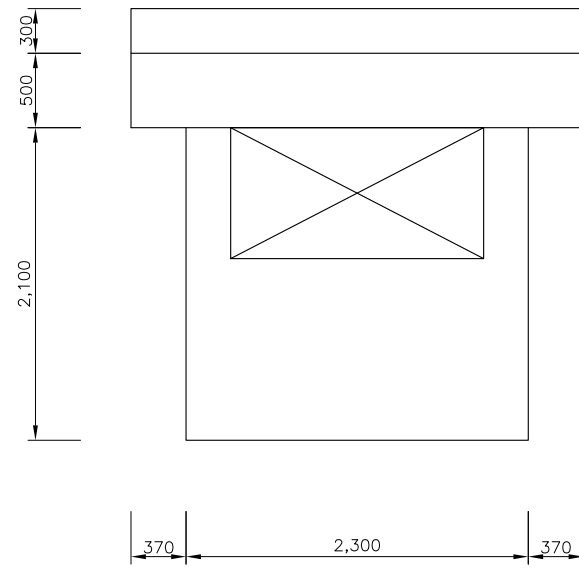
축척:A3=1/NONE



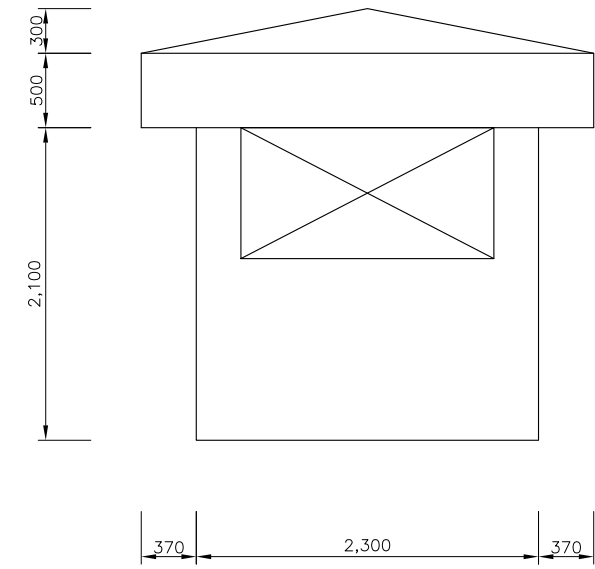
이면도



정면도



좌측면도



후면도